

# BRACCI ARMS

## Bracci scanalati 192

Grooved arms

22-002	195
22-003	193
22-004	195
22-005	195
22-006	195
22-007	194
22-008	194
22-011	197
22-013	197
22-014	197
22-017	196
22-018	196
22-019	205
23-005	214
23-006	214
23-007	210
23-008	210
23-009	204
23-010	204
23-011	211
23-012	211
23-013	210
23-014	210
23-015	200
23-016	200
23-017	199
23-018	199
23-019	214
23-019-10	214
23-020	214
23-020-10	214
23-021	203
23-022	203
23-023	203
23-024	203
23-025	203
23-026	203
23-027	203
23-028	203

23-029	201
23-030	207
23-031	207
23-032	207
23-034	209
23-035	209
23-036	209
23-038	211
23-039	211
23-040	211
23-041	204
23-042	200
23-043	200
23-044	196
23-045	196
23-048	213
23-049	202
23-051	205
23-058	212
23-059	212
23-063	204
23-064	204
23-065	204
23-068	210
23-069	210
23-070	210
23-071	210
23-072	206
23-073	206
23-076	213
23-078	212
23-079	212
23-080	205
23-081	207
23-082	207
23-083	207
23-084	201
H016	199
H019	199
H022	199
H209	202

H213	202
H215	202
H301	202
H307	202
H312	202
H338	202
H431	202
H478	206
H535	198
H561	206
H593	209
H594	209
H597	204
H606	193
H607	193
H608	193
H609	204
H611	208
H612	208
H613	206
H614	206
H619	206
H642	200
H747	201
H748	201
H763	197
H793	209

## Bracci con filo esterno 216

Arms with external cable

24-001	222
24-002	222
24-003	223
24-004	223
24-005	217
24-008	219
24-009	224
24-010	218
24-017	221
24-019	227

H356	225
H358	226
H404	220
H526	220
H527	220
H737	226
H750	221
H802	227
H803	227

## Bracci componibili 228

Composable arms

15-030	230
25-082	230
25-083	230
25-084	230
25-085	229
25-086	229
25-087	229
26-001	231
26-002	231
26-010	231
26-011	231
26-012	231
26-013	231
26-020	230
H781	232
H782	233
H783	232
H784	232
H790	233
H794	235
H795	235
H796	235
H798	235
H799	233
SW0301	234
SW0302	234
SW0303	234



# **BRACCI** **ARMS**

**Bracci scanalati**  
Grooved arms

**Bracci con filo esterno**  
Arms with external cable

**Bracci componibili**  
Composable arms

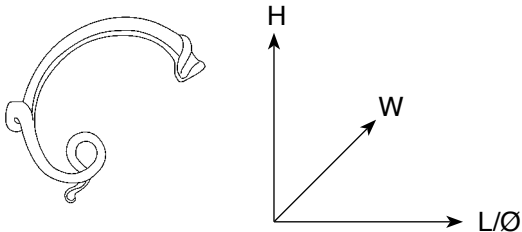


# BRACCI scanalati Grooved ARMS



## Lettura misure:

Measurement legenda:



L= Lunghezza/Length

H= Altezza/Height

W= Larghezza/Width

Ø= Diametro/Diameter

Tutti gli articoli filettati M 10/1 sono disponibili con filettatura 1/8 IPS. Per identificare la filettatura 1/8 IPS è necessario aggiungere il suffisso "-01" alla fine di ogni codice articolo.

All Framon threaded articles are M10/1 type; 1/8 IPS thread version is available on customer demand. To obtain 1/8 IPS suffix "-01" must be added at the end of the article code.

Esempio - Example:

22-001

22-001-01

filetto/thread M 10/1  
filetto/thread 1/8 IPS

**BRACCI scanalati**  
Grooved ARMS



**H606**  
L110 x W20 x H110  
filetto/thread M 10/1

**H608**  
L140 x W20 x H140  
filetto/thread M 10/1

**H607**  
L180 x W20 x H180  
filetto/thread M 10/1



**22-003**  
L140 x W18 x H160  
filetto/thread M 10/1



**22-007**  
L155 x W19 x H170  
filetto/thread M 10/1



**22-008**  
L150 x W20 x H170  
filetto/thread M 10/1

**BRACCI scanalati**  
Grooved ARMS



**22-006**  
L145 x W19 x H130  
filetto/thread M 10/1

**22-005**  
L175 x W19 x H175  
filetto/thread M 10/1



**22-002**  
L120 x W16 x H135  
filetto/thread M 10/1



**22-004**  
L140 x W15 x H120  
filetto/thread M 10/1



**23-045**  
L155 x W25 x H90  
filetto/thread M 10/1

**23-044**  
L220 x W42 x H100  
filetto/thread M 10/1



**22-018**  
L130 x W21 x H110  
filetto/thread M 10/1



**22-017**  
L165 x W18 x H110  
filetto/thread M 10/1



**BRACCI scanalati**  
Grooved ARMS



**22-013**  
L100 x W20 x H140  
filetto/thread M 10/1



**22-014**  
L105 x W19 x H135  
filetto/thread M 10/1



**22-011**  
L100 x W18 x H160  
filetto/thread M 10/1



**H763**  
L105 x W14 x H155  
filetto/thread M 10/1





**H535**

L160 x W25 x H290  
filetto/thread M 10/1

**BRACCI scanalati**  
Grooved ARMS



**H022**  
L145 x W18 x H110  
filetto/thread M 10/1

**H019**  
L200 x W19 x H140  
filetto/thread M 10/1

**H016**  
L325 x W22 x H170  
filetto/thread M 10/1



**23-018**  
L170 x W18 x H100  
filetto/thread M 10/1

**23-017**  
L250 x W20 x H140  
filetto/thread M 10/1



**23-043**

L140 x W17 x H75  
filetto/thread M 10/1

**23-042**

L210 x W20 x H120  
filetto/thread M 10/1



**H642**

L195 x W32 x H120  
filetto/thread M 10/1



**23-016**

L180 x W18 x H100  
filetto/thread M 10/1

**23-015**

L240 x W22 x H140  
filetto/thread M 10/1



**BRACCI scanalati**  
Grooved ARMS



**H748**  
L230 x W30 x H125  
filetto/thread M 10/1



**H747**  
L280 x W41 x H140  
filetto/thread M 10/1

**23-029**  
L85 x W20 x H130  
filetto/thread M 10/1



**23-084**  
L360 x W30 x H250  
filetto/thread M 10/1



**H209**

L125 x W16 x H65  
filetto/thread M 10/1

**23-049**

L190 x W21 x H90  
filetto/thread M 10/1

**H213**

L220 x W25 x H110  
filetto/thread M 10/1

**H215**

L310 x W28 x H120  
filetto/thread M 10/1



**H338**

L110 x W17 x H45  
filetto/thread M 10/1

**H431**

L160 x W16 x H70  
filetto/thread M 10/1

**H307**

L190 x W16 x H90  
filetto/thread M 10/1

**H301**

L235 x W17 x H110  
filetto/thread M 10/1

**H312**

L320 x W17 x H110  
filetto/thread M 10/1

**BRACCI scanalati**  
Grooved ARMS



**23-028**

L140 x W17 x H75  
filetto/thread M 10/1

**23-027**

L170 x W17 x H110  
filetto/thread M 10/1

**23-026**

L210 x W20 x H130  
filetto/thread M 10/1

**23-025**

L360 x W30 x H225  
filetto/thread M 10/1



**23-024**

L140 x W17 x H65  
filetto/thread M 10/1

**23-023**

L180 x W18 x H100  
filetto/thread M 10/1

**23-022**

L245 x W18 x H110  
filetto/thread M 10/1

**23-021**

L350 x W25 x H160  
filetto/thread M 10/1





**23-010**

L190 x W40 x H60  
filetto/thread M 10/1

**23-009**

L250 x W40 x H80  
filetto/thread M 10/1



**23-065**

L130 x W18 x H50  
filetto/thread M 10/1

**23-064**

L150 x W20 x H70  
filetto/thread M 10/1

**23-063**

L190 x W21 x H90  
filetto/thread M 10/1

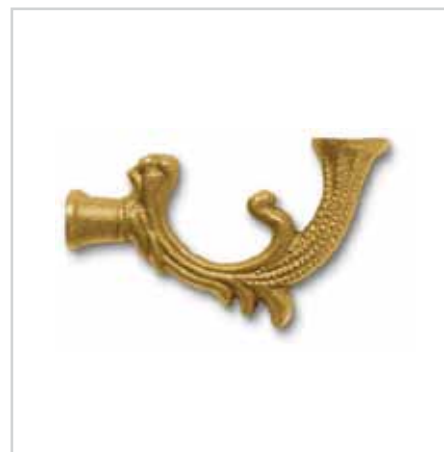


**H609**

L120 x W16 x H60  
filetto/thread M 10/1

**H597**

L145 x W16 x H70  
filetto/thread M 10/1



**23-041**

L90 x W19 x H55  
filetto/thread M 10/1

**BRACCI scanalati**  
Grooved ARMS



**22-019**

L260 x W26 x H200  
filetto/thread M 10/1



**23-080**

L170 x W19 x H130  
filetto/thread M 10/1

**23-051**

L200 x W19 x H110  
filetto/thread M 10/1



**23-073**  
L140 x W18 x H80  
filetto/thread M 10/1

**23-072**  
L210 x W22 x H130  
filetto/thread M 10/1

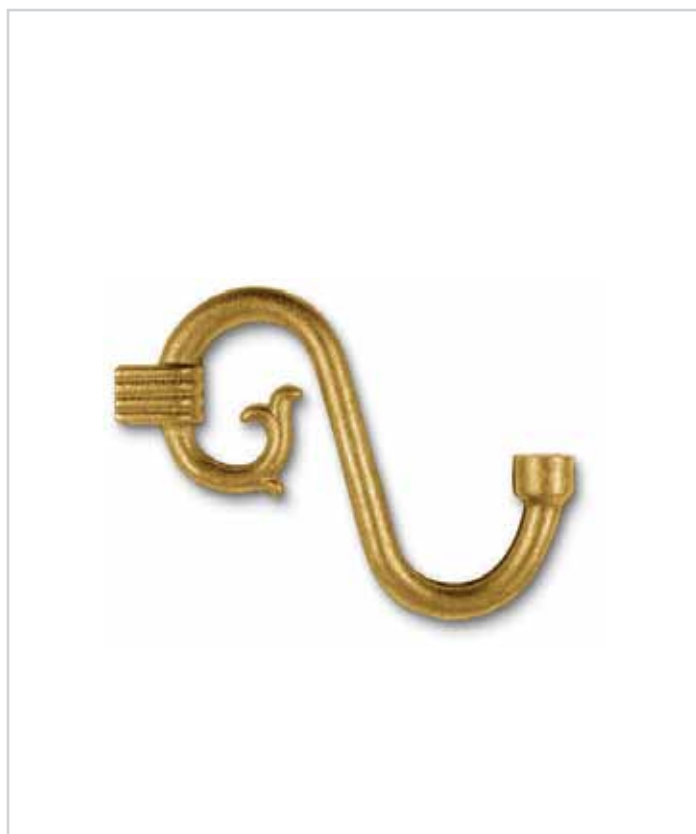


**H478**  
L150 x W22 x H75  
filetto/thread M 10/1



**H613**  
L120 x W14 x H50  
filetto/thread M 10/1

**H614**  
L150 x W16 x H60  
filetto/thread M 10/1



**H619**  
L110 x W14 x H85  
filetto/thread M 10/1

**H561**  
L145 x W13 x H115  
filetto/thread M 10/1





**23-032**

L155 x W21 x H60  
filetto/thread M 10/1

**23-031**

L220 x W31 x H90  
filetto/thread M 10/1

**23-030**

L320 x W42 x H120  
filetto/thread M 10/1



**23-081**

L170 x W18 x H70  
filetto/thread M 10/1  
secondo filetto/second thread M 10/1

**23-082**

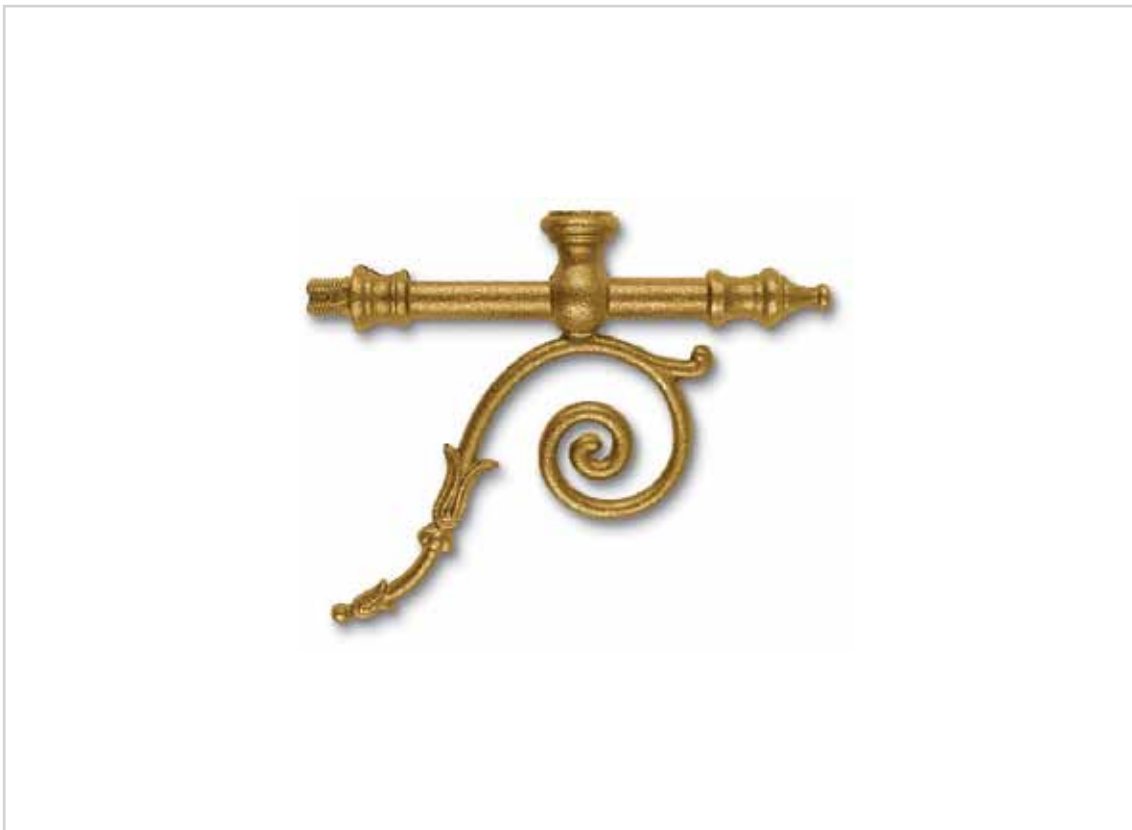
L245 x W22 x H125  
filetto/thread M 10/1  
secondo filetto/second thread M 10/1

**23-083**

L300 x W24 x H210  
filetto/thread M 10/1  
secondo filetto/second thread M 10/1



**H611**  
L200 x W20 x H130  
filetto/thread M 10/1



**H612**  
L130 x W20 x H100  
filetto/thread M 10/1

**BRACCI scanalati**  
Grooved ARMS



**23-036**

L150 x W15 x H120  
filetto/thread M 10/1

**23-035**

L260 x W18 x H200  
filetto/thread M 10/1

**23-034**

L300 x W25 x H240  
filetto/thread M 10/1



**H593**

L120 x W15 x H60  
filetto/thread M 10/1

**H594**

L160 x W19 x H95  
filetto/thread M 10/1



**H793**

L140 x W23 x H25  
filetto/thread M 10/1



**23-071**  
L155 x W18 x H110  
filetto/thread M 10/1



**23-014**  
L155 x W18 x H115  
filetto/thread M 10/1

**23-013**  
L240 x W19 x H180  
filetto/thread M 10/1



**23-069**  
L165 x W18 x H85  
filetto/thread M 10/1

**23-068**  
L205 x W22 x H100  
filetto/thread M 10/1



**23-008**  
L150 x W17 x H90  
filetto/thread M 10/1

**23-007**  
L240 x W24 x H150  
filetto/thread M 10/1



**BRACCI scanalati**  
Grooved ARMS



**23-040**

L155 x W20 x H120  
filetto/thread M 10/1

**23-039**

L205 x W20 x H140  
filetto/thread M 10/1

**23-038**

L300 x W27 x H200  
filetto/thread M 10/1



**23-012**

L180 x W21 x H160  
filetto/thread M 10/1

**23-011**

L250 x W28 x H240  
filetto/thread M 10/1



**23-059**

L160 x W20 x H130  
filetto/thread M 10/1

**23-058**

L230 x W17 x H200  
filetto/thread M 10/1



**23-079**

L170 x W16 x H150  
filetto/thread M 10/1

**23-078**

L250 x W18 x H190  
filetto/thread M 10/1

**23-048**

L190 x W17 x H155  
filetto/thread M 10/1

**23-076**

L170 x W17 x H160  
filetto/thread M 10/1



**23-006**

L160 x W20 x H110  
filetto/thread M 10/1

**23-005**

L230 x W16 x H155  
filetto/thread M 10/1

**23-020-10**

Ø26,5 x H10  
filetto/thread M 10/1

**23-019-10**

Ø40 x H12  
filetto/thread M 10/1



**23-020**

L155 x W28 x H80  
filetto/thread M 10/1

**23-019**

L230 x W42 x H120  
filetto/thread M 10/1





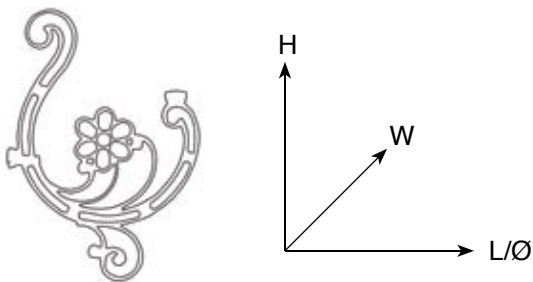
# BRACCI con filo esterno

## ARMS with external cable



### Lettura misure:

Measurement legenda:



L= Lunghezza/Length

H= Altezza/Height

W= Larghezza/Width

Ø= Diametro/Diameter

Tutti gli articoli filettati M 10/1 sono disponibili con filettatura 1/8 IPS. Per identificare la filettatura 1/8 IPS è necessario aggiungere il suffisso "-01" alla fine di ogni codice articolo.

All Framon threaded articles are M10/1 type; 1/8 IPS thread version is available on customer demand. To obtain 1/8 IPS suffix "-01" must be added at the end of the article code.

Esempio - Example:

22-001

22-001-01

filetto/thread M 10/1

filetto/thread 1/8 IPS

**BRACCI con filo esterno**  
ARMS with external cable**24-005**L210 x W21 x H430  
filetto/thread M 10/1



**24-010**

L195 x W24 x H320  
filetto/thread M 10/1



**24-008**

L180 x W19 x H245  
filetto/thread M 10/1



**H526**  
L75 x W15 x H160

**H527**  
L130 x W15 x H285



**H404**  
L240 x W18 x H170  
filetto/thread M 10/1

**BRACCI con filo esterno**  
ARMS with external cable**H750**

L190 x W16 x H190  
filetto/thread M 10/1

**24-017**

L145 x W18 x H175  
filetto/thread M 10/1



**24-002**

L175 x W19 x H350  
filetto/thread M 10/1

**24-001**

L230 x W19 x H470  
filetto/thread M 10/1



**24-004**

L175 x W19 x H250  
filetto/thread M 10/1

**24-003**

L230 x W19 x H350  
filetto/thread M 10/1



**24-009**

L150 x W18 x H250  
filetto/thread M 10/1



**H356**

L250 x W23 x H330  
filetto/thread M 10/1



**H737**  
L110 x W12 x H330  
filetto/thread M 10/1



**H358**  
L200 x W18 x H390  
filetto/thread M 10/1



**BRACCI con filo esterno**  
ARMS with external cable



**24-019**  
L190 x W21 x H250  
filetto/thread M 10/1



**H803**  
L130 x W15 x H90  
filetto/thread M 10/1

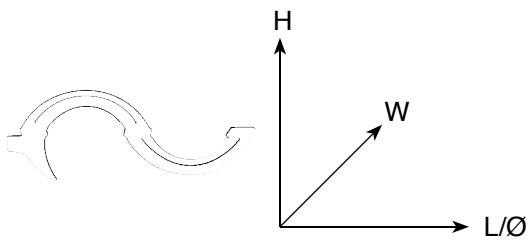
**H802**  
L230 x W20 x H160  
filetto/thread M 10/1

# BRACCI componibili Composable ARMS



## Lettura misure:

Measurement legenda:



L= Lunghezza/Length

H= Altezza/Height

W= Larghezza/Width

Ø= Diametro/Diameter

Tutti gli articoli filettati M 10/1 sono disponibili con filettatura 1/8 IPS. Per identificare la filettatura 1/8 IPS è necessario aggiungere il suffisso "-01" alla fine di ogni codice articolo.

All Framon threaded articles are M10/1 type; 1/8 IPS thread version is available on customer demand. To obtain 1/8 IPS suffix "-01" must be added at the end of the article code.

Esempio - Example:

22-001

22-001-01

filetto/thread M 10/1

filetto/thread 1/8 IPS



**25-085**

L330 x W35 x H120

**25-086**

L450 x W35 x H140

**25-087**

L580 x W35 x H160



**25-082**

L190 x H120 x W35

**25-083**

L255 x H140 x W35

**25-084**

L330 x H160 x W35



**15-030**

L35 x W35 x H10



**26-020**

L35 x W70 x H70



**BRACCI componibili**  
Composable ARMS



**26-002**  
L160 x W5 x H45  
2 pezzi per telaio  
*2 pcs for frame*

**26-011**  
L220 x W5 x H45  
2 pezzi per telaio  
*2 pcs for frame*

**26-013**  
L320 x W5 x H45  
2 pezzi per telaio  
*2 pcs for frame*



**26-001**  
L170 x W30 x H50

**26-010**  
L230 x W30 x H70

**26-012**  
L330 x W30 x H70



**H784**

L270 x W65 x H65



**H781**

L280 x W42 x H55



**H783**

L310 x W35 x H70

**BRACCI componibili**  
Composable ARMS



**H782**

L175 x W29 x H30



**H790**

L200 x W32 x H55



**H799**

L220 x W40 x H90



**SW0302**  
L330 x W22 x H60



**SW0303**  
L315 x W22 x H60



**SW0301**  
L185 x W22 x H60



**BRACCI componibili**  
Composable ARMS



**H794**  
L225 x W49 x H55



**H795**  
L155 x W44 x H55



**H798**  
L165 x W46 x H55



**H796**  
L165 x W45 x H60

**BRACCI CON  
TUBO INTERNO  
ARMS WITH  
INTERNAL TUBE**

25-001	247	25-079	274	H504	254	H668	276
25-002	247	25-080	241	H505	254	H671	289
25-003	247	25-081	241	H513	254	H672	276
25-004	247	25-089	264	H514	254	H677	287
25-008	246	25-090	243	H515	254	H678	288
25-009	246	25-091	243	H516	252	H697	271
25-010	246	25-092	243	H517	252	H713	278
25-011	246	25-093	240	H518	252	H717	252
25-012	246	25-094	240	H519	273	H719	285
25-013	246	25-095	240	H520	273	H720	244
25-014	280	25-096	240	H523	272	H721	244
25-015	280	F514	265	H524	272	H730	289
25-016	280	H033	270	H528	260	H731	287
25-017	263	H034	270	H531	257	H732	255
25-018	263	H040	271	H532	257	H733	255
25-019	263	H091	271	H548	262	H734	256
25-020	274	H139	260	H549	262	H735	256
25-021	251	H146	284	H554	253	H739	286
25-022	251	H163	273	H555	253	H740	286
25-023	251	H166	262	H556	253	H741	286
25-027	284	H168	262	H559	258	H744	252
25-028	284	H245	279	H560	258	H753	266
25-029	284	H246	279	H577	251	H754	258
25-035	282	H313	270	H578	251	H755	258
25-036	282	H316	270	H579	251	H758	252
25-037	283	H379	256	H580	251	H768	257
25-038	283	H381	256	H584	261	H777	249
25-039	283	H382	281	H585	261	H778	249
25-040	283	H383	281	H586	261	H805	287
25-041	243	H386	281	H587	269	H806	287
25-042	243	H402	277	H588	269	H809	291
25-043	241	H414	261	H589	269	H810	290
25-044	241	H416	261	H595	248	H812	290
25-051	250	H417	261	H601	277	H813	290
25-052	250	H436	249	H603	264	H814	290
25-053	250	H437	249	H604	288	H815	242
25-054	277	H438	249	H615	253	H818	291
25-055	267	H439	250	H616	253	H819	291
25-056	266	H440	250	H617	253	H820	291
25-057	271	H441	250	H620	263	H827	242
25-061	245	H453	247	H621	263	H828	271
25-062	245	H454	247	H623	266	H829	271
25-063	245	H455	247	H626	243	H830	284
25-064	245	H458	277	H627	243	H831	262
25-065	245	H459	277	H630	268	H832	267
25-066	245	H464	259	H631	268	H836	291
25-069	270	H465	259	H636	275	H838	242
25-070	244	H467	241	H643	266	H839	242
25-071	244	H468	241	H647	255	H840	265
25-072	244	H471	248	H648	255	H841	265
25-073	244	H472	248	H649	259	H842	265
25-074	239	H473	248	H650	259	H849	242
25-075	239	H474	269	H651	268	H850	265
25-076	239	H475	269	H656	257		
25-077	239	H476	285	H659	270		
25-078	239	H502	248	H660	272		



**BRACCI  
CON TUBO  
INTERNO**

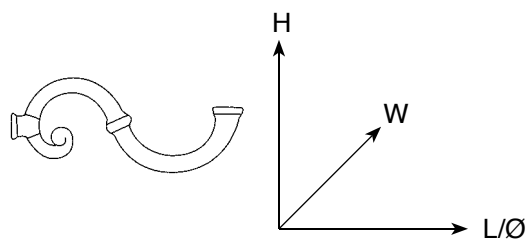
**ARMS WITH  
INTERNAL  
TUBE**





**Lettura misure:**

*Measurement legenda:*



L= Lunghezza/Length  
H= Altezza/Height  
W= Larghezza/Width  
Ø= Diametro/Diameter

Tutti gli articoli filettati M 10/1 sono disponibili con filettatura 1/8 IPS. Per identificare la filettatura 1/8 IPS è necessario aggiungere il suffisso "-01" alla fine di ogni codice articolo.

*All Framon threaded articles are M10/1 type; 1/8 IPS thread version is available on customer demand. To obtain 1/8 IPS suffix "-01" must be added at the end of the article code.*

Esempio - Example:

22-001  
22-001-01

filetto/thread M 10/1  
filetto/thread 1/8 IPS

**BRACCI con tubo interno**  
ARMS with internal tube



**25-074**  
L140 x W26 x H120  
filetto/thread M 10/1

**25-075**  
L225 x W32 x H180  
filetto/thread M 10/1

**25-076**  
L325 x W25 x H220  
filetto/thread M 10/1

**25-077**  
L430 x W42 x H300  
filetto/thread M 10/1  
filetto/thread 1/4 gas

**25-078**  
L590 x W35 x H380  
filetto/thread M 10/1  
filetto/thread 1/4 gas





25-096  
1/4 gas

**25-093**

L125 x W24 x H130  
filetto/thread M 10/1

**25-094**

L170 x W31 x H190  
filetto/thread M 10/1

**25-095**

L230 x W40 x H250  
filetto/thread M 10/1

**25-096**

L300 x W55 x H350  
filetto/thread M 10/1  
filetto/thread 1/4 gas

**BRACCI con tubo interno**  
**ARMS with internal tube**



**25-044**

L125 x W24 x H130  
 filetto/thread M 10/1

**25-043**

L170 x W31 x H190  
 filetto/thread M 10/1

**25-080**

L230 x W40 x H250  
 filetto/thread M 10/1

**25-081**

L280 x W40 x H300  
 filetto/thread M 10/1



**H467**

L130 x W20 x H55  
 filetto/thread M 10/1

**H468**

L230 x W20 x H95  
 filetto/thread M 10/1



**H827**  
L120 x W19 x H90  
filetto/thread M 10/1

**H815**  
L160 x W22 x H130  
filetto/thread M 10/1

**H849**  
L200 x W25 x H175  
filetto/thread M 10/1

**H839**  
L300 x W45 x H245  
filetto/thread M 10/1



**H838**  
L180 x W28 x H130  
filetto/thread M 10/1

**BRACCI con tubo interno**  
ARMS with internal tube



**25-042**  
L130 x W24 x H130  
filetto/thread M 10/1

**25-041**  
L170 x W25 x H170  
filetto/thread M 10/1

**25-090**  
L250 x W30 x H220  
filetto/thread M 10/1

**25-091**  
L315 x W33 x H280  
filetto/thread M 10/1

**25-092**  
L420 x W35 x H280  
filetto/thread M 10/1  
filetto/thread 1/4 gas



**H627**  
L145 x W23 x H160  
filetto/thread M 10/1

**H626**  
L170 x W27 x H180  
filetto/thread M 10/1



**25-072**

L165 x W22 x H55  
filetto/thread M 10/1

**25-071**

L215 x W22 x H70  
filetto/thread M 10/1

**25-070**

L290 x W22 x H80  
filetto/thread M 10/1

**25-073**

L360 x W26 x H90  
filetto/thread M 10/1



**H720**

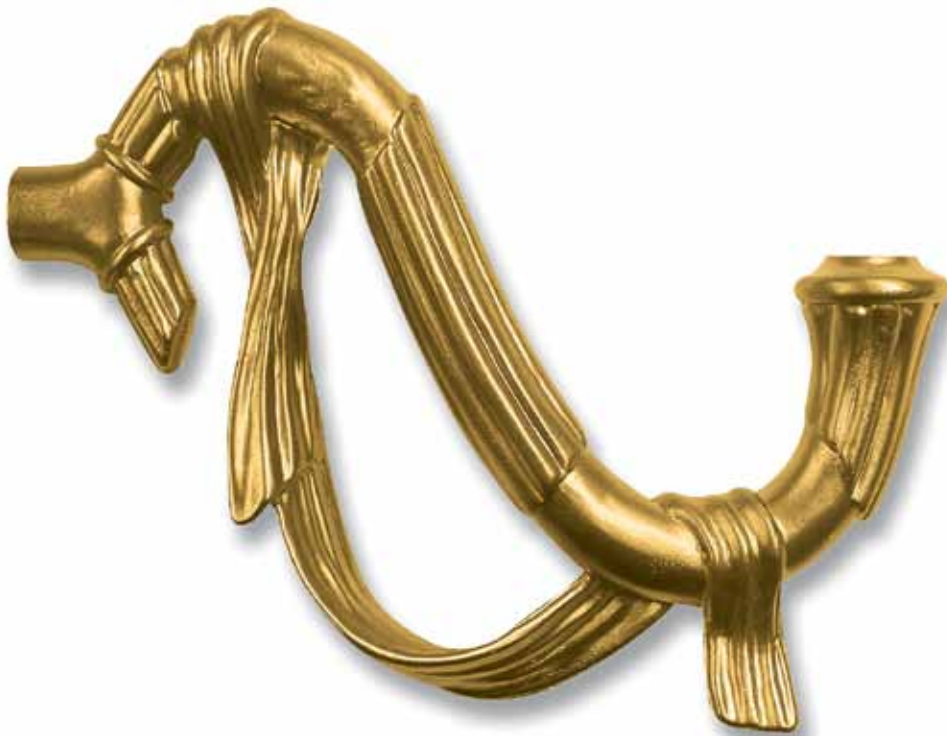
L170 x W15 x H70  
filetto/thread M 10/1

**H721**

L280 x W15 x H120  
filetto/thread M 10/1



**BRACCI con tubo interno**  
ARMS with internal tube



**25-066**

L155 x W26 x H135  
filetto/thread M 10/1

**25-065**

L205 x W30 x H165  
filetto/thread M 10/1

**25-064**

L280 x W35 x H240  
filetto/thread M 10/1



**25-063**

L140 x W34 x H75  
filetto/thread M 10/1

**25-062**

L210 x W36 x H95  
filetto/thread M 10/1

**25-061**

L290 x W36 x H140  
filetto/thread M 10/1



**25-010**  
L155 x W26 x H85  
filetto/thread M 10/1

**25-009**  
L200 x W26 x H100  
filetto/thread M 10/1

**25-008**  
L280 x W28 x H150  
filetto/thread M 10/1



**25-013**  
L150 x W29 x H75  
filetto/thread M 10/1

**25-012**  
L200 x W29 x H95  
filetto/thread M 10/1

**25-011**  
L260 x W35 x H145  
filetto/thread M 10/1

**BRACCI con tubo interno**  
ARMS with internal tube



**25-004**

L125 x W18 x H90  
filetto/thread M 10/1

**25-003**

L170 x W19 x H120  
filetto/thread M 10/1

**25-002**

L230 x W21 x H140  
filetto/thread M 10/1

**25-001**

L295 x W25 x H190  
filetto/thread M 10/1



**H455**

L150 x W19 x H70  
filetto/thread M 10/1

**H453**

L240 x W23 x H120  
filetto/thread M 10/1

**H454**

L310 x W28 x H155  
filetto/thread M 10/1



**H472**

L165 x W18 x H75  
filetto/thread M 10/1

**H473**

L225 x W19 x H100  
filetto/thread M 10/1

**H471**

L270 x W19 x H125  
filetto/thread M 10/1



**H595**

L200 x W20 x H120  
filetto/thread M 10/1

**H502**

L290 x W20 x H245  
filetto/thread M 10/1

**BRACCI con tubo interno**  
ARMS with internal tube



**H778**  
L250 x W30 x H160  
filetto/thread M 10/1

**H777**  
L380 x W40 x H220  
filetto/thread M 10/1



**H438**  
L150 x W19 x H90  
filetto/thread M 10/1

**H437**  
L220 x W21 x H130  
filetto/thread M 10/1

**H436**  
L290 x W23 x H170  
filetto/thread M 10/1





**H439**

L140 x W16 x H75  
filetto/thread M 10/1

**H441**

L205 x W18 x H85  
filetto/thread M 10/1

**H440**

L290 x W20 x H115  
filetto/thread M 10/1



**25-053**

L135 x W23 x H60  
filetto/thread M 10/1

**25-052**

L190 x W24 x H70  
filetto/thread M 10/1

**25-051**

L225 x W26 x H90  
filetto/thread M 10/1

**BRACCI con tubo interno**  
ARMS with internal tube



**25-023**

L125 x W19 x H60  
filetto/thread M 10/1

**25-022**

L225 x W25 x H100  
filetto/thread M 10/1

**25-021**

L300 x W31 x H120  
filetto/thread M 10/1



**H577**

L150 x W28 x H55  
filetto/thread M 10/1

**H578**

L200 x W33 x H70  
filetto/thread M 10/1

**H579**

L270 x W36 x H90  
filetto/thread M 10/1

**H580**

L335 x W46 x H125  
filetto/thread M 10/1



**H717**  
L260 x W31 x H180  
filetto/thread M 10/1

**H744**  
L310 x W33 x H170  
filetto/thread M 10/1

**H758**  
L440 x W38 x H188  
filetto/thread M 10/1



**H517**  
L175 x W28 x H95  
filetto/thread M 10/1

**H518**  
L250 x W32 x H135  
filetto/thread M 10/1

**H516**  
L300 x W34 x H170  
filetto/thread M 10/1

**BRACCI con tubo interno**  
**ARMS with internal tube**



**H615**  
 L170 x W26 x H90  
 filetto/thread M 10/1

**H616**  
 L260 x W32 x H135  
 filetto/thread M 10/1

**H617**  
 L335 x W38 x H185  
 filetto/thread M 10/1



**H554**  
 L140 x W20 x H85  
 filetto/thread M 10/1

**H555**  
 L205 x W25 x H125  
 filetto/thread M 10/1

**H556**  
 L280 x W26 x H160  
 filetto/thread M 10/1



**H514**

L175 x W31 x H95  
filetto/thread M 10/1

**H515**

L250 x W34 x H135  
filetto/thread M 10/1

**H513**

L300 x W37 x H170  
filetto/thread M 10/1



**H504**

L160 x W17 x H50  
filetto/thread M 10/1

**H505**

L280 x W21 x H75  
filetto/thread M 10/1



**BRACCI con tubo interno**  
ARMS with internal tube



**H733**

L240 x W31 x H100  
filetto/thread M 10/1

**H732**

L305 x W27 x H115  
filetto/thread M 10/1



**H648**

L145 x W22 x H65  
filetto/thread M 10/1

**H647**

L235 x W31 x H105  
filetto/thread M 10/1



**H735**

L150 x W21 x H60  
filetto/thread M 10/1

**H734**

L240 x W22 x H90  
filetto/thread M 10/1



**H379**

L140 x W22 x H70  
filetto/thread M 10/1

**H381**

L220 x W27 x H100  
filetto/thread M 10/1

**BRACCI con tubo interno**  
**ARMS with internal tube**



**H656**

L155 x W20 x H100  
 filetto/thread M 10/1

**H768**

L210 x W26 x H120  
 filetto/thread M 10/1



**H531**

L150 x W20 x H80  
 filetto/thread M 10/1

**H532**

L230 x W25 x H140  
 filetto/thread M 10/1



**H559**

L145 x W20 x H70  
filetto/thread M 10/1

**H560**

L190 x W20 x H90  
filetto/thread M 10/1



**H755**

L150 x W21 x H70  
filetto/thread M 10/1

**H754**

L220 x W23 x H110  
filetto/thread M 10/1

**BRACCI con tubo interno**  
**ARMS with internal tube**



**H464**

L145 x W17 x H55  
 filetto/thread M 10/1

**H465**

L235 x W22 x H110  
 filetto/thread M 10/1



**H650**

L135 x W20 x H50  
 filetto/thread M 10/1

**H649**

L210 x W25 x H100  
 filetto/thread M 10/1





**H139**

L315 x W52 x H165  
filetto/thread M 10/1



**H528**

L280 x W22 x H135  
filetto/thread M 10/1

**BRACCI con tubo interno**  
ARMS with internal tube



**H414**

L140 x W20 x H40  
filetto/thread M 10/1

**H416**

L235 x W26 x H60  
filetto/thread M 10/1

**H417**

L300 x W30 x H75  
filetto/thread M 10/1



**H584**

L150 x W19 x H60  
filetto/thread M 10/1

**H585**

L225 x W22 x H80  
filetto/thread M 10/1

**H586**

L300 x W24 x H125  
filetto/thread M 10/1



**H831**

L235 x W20 x H110  
filetto/thread M 10/1

**H166**

L315 x W29 x H145  
filetto/thread M 10/1

**H168**

L400 x W34 x H180  
filetto/thread M 10/1



**H548**

L150 x W23 x H90  
filetto/thread M 10/1

**H549**

L265 x W26 x H160  
filetto/thread M 10/1

**BRACCI con tubo interno**  
ARMS with internal tube



**25-019**

L155 x W20 x H100  
filetto/thread M 10/1

**25-018**

L270 x W24 x H180  
filetto/thread M 10/1

**25-017**

L330 x W24 x H240  
filetto/thread M 10/1



**H621**

L160 x W19 x H80  
filetto/thread M 10/1

**H620**

L250 x W24 x H130  
filetto/thread M 10/1



**H603**

L310 x W38 x H210  
filetto/thread M 10/1



**25-089**

L330 x W38 x H210  
filetto/thread M 10/1



**BRACCI con tubo interno**  
ARMS with internal tube



**H850**

L570 x W60 x H280  
filetto/thread M 10/1



**H840**

L50 x W32 x H60  
filetto/thread M 13/1



**H841**

L210 x W60 x H140  
filetto/thread M 13/1



**F514**

Ø40 x H26  
filetto/thread M 13/1



**H842**

L355 x W60 x H140  
filetto/thread M 13/1



**H753**  
L140 x W17 x H75  
filetto/thread M 10/1



**H623**  
L155 x W20 x H60  
filetto/thread M 10/1



**H643**  
L145 x W25 x H85  
filetto/thread M 10/1



**25-056**  
L160 x W20 x H110  
filetto/thread M 10/1

**BRACCI con tubo interno**  
**ARMS with internal tube**



**H832**

L180 x W20 x H140  
 filetto/thread M 10/1



**25-055**

L240 x W25 x H170  
 filetto/thread M 10/1



**H651**

L240 x W31 x H135  
filetto/thread M 10/1



**H631**

L160 x W19 x H100  
filetto/thread M 10/1

**H630**

L225 x W25 x H145  
filetto/thread M 10/1

**BRACCI con tubo interno**  
**ARMS with internal tube**



**H587**  
 L180 x W20 x H85  
 filetto/thread M 10/1

**H588**  
 L250 x W21 x H110  
 filetto/thread M 10/1

**H589**  
 L295 x W28 x H180



**H474**  
 L170 x W20 x H100  
 filetto/thread M 10/1

**H475**  
 L230 x W20 x H130  
 filetto/thread M 10/1





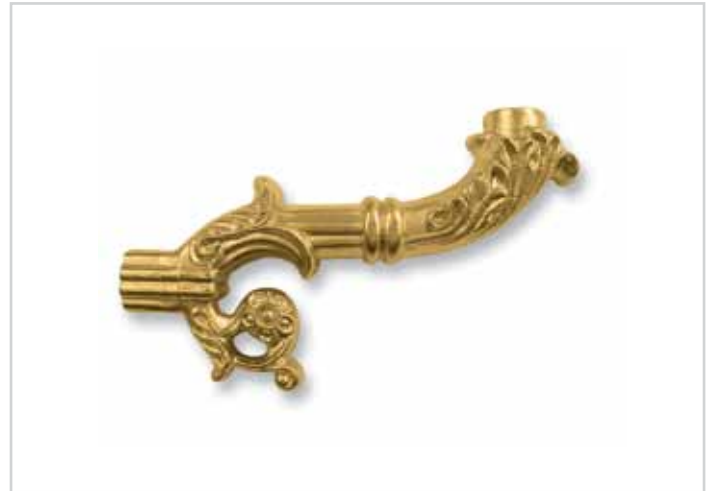
**H033**  
L155 x W31 x H100  
filetto/thread M 10/1



**H034**  
L110 x W29 x H75  
filetto/thread M 10/1



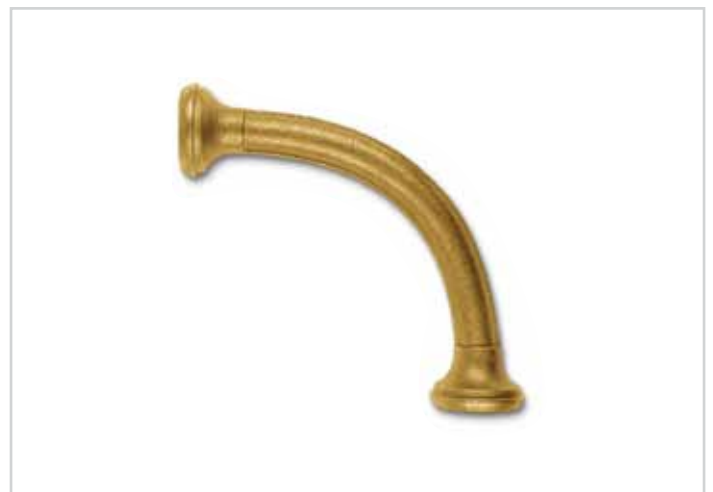
**H316**  
L110 x W20 x H115  
filetto/thread M 10/1



**25-069**  
L120 x W27 x H75  
filetto/thread M 10/1



**H313**  
L90 x W30 x H100  
filetto/thread M 10/1



**H659**  
L140 x W40 x H130  
filetto/thread M 10/1

**BRACCI con tubo interno**  
ARMS with internal tube



**H091**  
L90 x W19 x H70  
filetto/thread M 10/1



**H828**  
L90 x W16 x H50  
filetto/thread M 10/1



**H829**  
L90 x W16 x H65  
filetto/thread M 10/1



**H697**  
L120 x W20 x H80  
filetto/thread M 10/1



**25-057**  
L135 x W27 x H90  
filetto/thread M 10/1



**H040**  
L155 x W16 x H60  
filetto/thread M 10/1



**H660**  
L250 x W40 x H185  
filetto/thread M 10/1



**H524**  
L195 x W23 x H105  
filetto/thread M 10/1



**H523**  
L45 x W95 x W23  
filetto/thread M 10/1

**BRACCI con tubo interno**  
ARMS with internal tube



**H163**

L290 x W27 x H60  
filetto/thread M 10/1



**H519**

L190 x W24 x H155  
filetto/thread M 10/1

**H520**

L300 x W24 x H250  
filetto/thread M 10/1



**25-079**  
L90 x W28 x H320  
filetto/thread M 10/1



**25-020**  
L75 x W21 x H250  
filetto/thread M 10/1



**BRACCI con tubo interno**  
ARMS with internal tube**H636**

L175 x W27 x H275  
filetto/thread M 10/1



**H672**  
L130 x W21 x H310  
filetto/thread M 10/1



**H668**  
L155 x W17 x H230  
filetto/thread M 10/1

**BRACCI con tubo interno**  
ARMS with internal tube



**H458**  
L110 x W21 x H165  
filetto/thread M 10/1

**H459**  
L145 x W21 x H190  
filetto/thread M 10/1

**H402**  
L185 x W19 x H225  
filetto/thread M 10/1



**25-054**  
L100 x W25 x H170  
filetto/thread M 10/1



**H601**  
L75 x W23 x H165  
filetto/thread M 10/1



**H713**

L270 x W37 x H400  
filetto/thread M 10/1

**H246**

L185 x W21 x H225  
filetto/thread M 10/1

**H245**

L265 x W25 x H330  
filetto/thread M 10/1





**25-016**

L150 x W18 x H150  
filetto/thread M 10/1

**25-015**

L210 x W22 x H210  
filetto/thread M 10/1

**25-014**

L280 x W26 x H280  
filetto/thread M 10/1

**BRACCI con tubo interno**  
ARMS with internal tube



**H386**

L145 x W21 x H105  
filetto/thread M 10/1

**H382**

L225 x W31 x H180  
filetto/thread M 10/1

**H383**

L300 x W40 x H230  
filetto/thread M 10/1



**25-036**

L175 x W27 x H180  
filetto/thread M 10/1

**25-035**

L245 x W31 x H250  
filetto/thread M 10/1

**BRACCI con tubo interno**  
**ARMS with internal tube**



**25-038**

L160 x W22 x H110  
 filetto/thread M 10/1

**25-037**

L225 x W24 x H150  
 filetto/thread M 10/1



**25-040**

L140 x W15 x H120  
 filetto/thread M 10/1

**25-039**

L200 x W20 x H165  
 filetto/thread M 10/1



**H830**

L140 x W22 x H100  
filetto/thread M 10/1

**H146**

L175 x W23 x H165  
filetto/thread M 10/1



**25-029**

L115 x W24 x H140  
filetto/thread M 10/1

**25-028**

L135 x W24 x H175  
filetto/thread M 10/1

**25-027**

L225 x W160 x W24  
filetto/thread M 10/1



**BRACCI con tubo interno**  
ARMS with internal tube**H476**

L230 x W21 x H180  
filetto/thread M 10/1

**H719**

L310 x W25 x H230  
filetto/thread M 10/1



**H739**

L255 x W22 x H210  
filetto/thread M 10/1



**H740**

L250 x W28 x H165  
filetto/thread M 10/1

**H741**

L360 x W28 x H190  
filetto/thread M 10/1

**BRACCI con tubo interno**  
ARMS with internal tube



**H805**  
L95 x W17 x H145  
filetto/thread M 10/1



**H806**  
L75 x W17 x H65  
filetto/thread M 10/1



**H677**  
L130 x W18 x H140  
filetto/thread M 10/1



**H731**  
L330 x W26 x H225  
filetto/thread M 10/1



**H604**  
L170 x W22 x H355  
filetto/thread M 10/1



**H678**  
L155 x W17 x H270  
filetto/thread M 10/1

**BRACCI con tubo interno**  
**ARMS with internal tube**



**H730**  
 L185 x W26 x H300  
 filetto/thread M 10/1



**H671**  
 L140 x W20 x H290  
 filetto/thread M 10/1





**H810**  
L175 x W45 x H175  
filetto/thread M 10/1



**H814**  
L175 x W45 x H200  
filetto/thread M 10/1



**H812**  
L140 x W45 x H150  
filetto/thread M 10/1

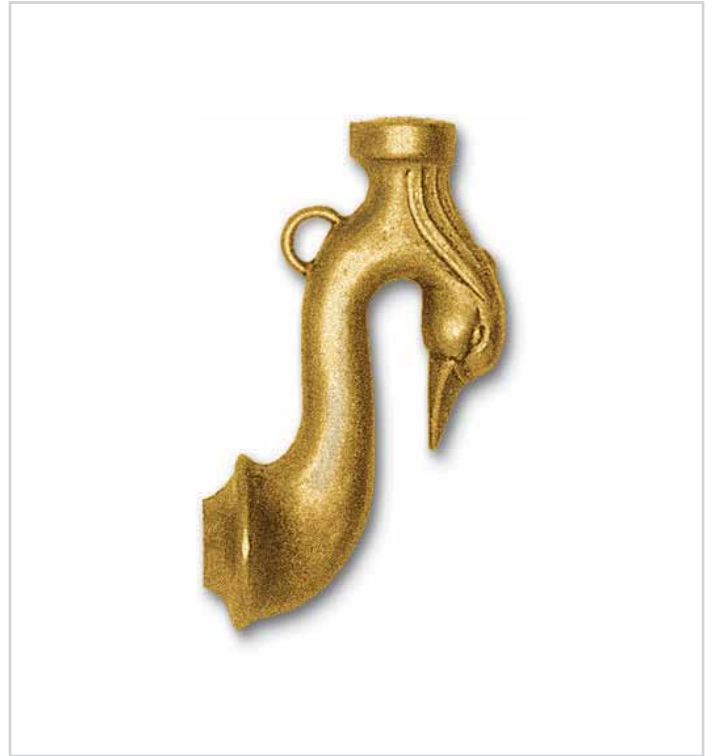


**H813**  
L140 x W50 x H145  
filetto/thread M 10/1

**BRACCI con tubo interno**  
ARMS with internal tube

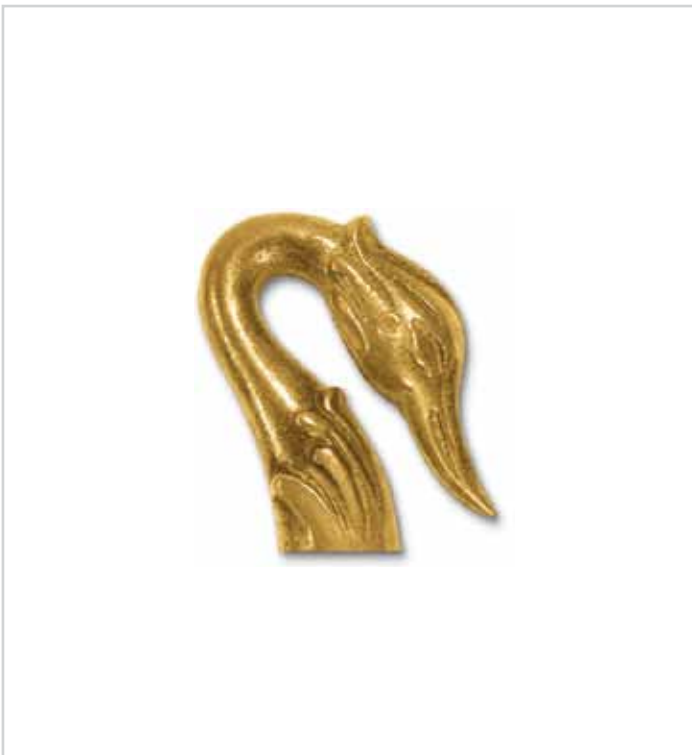


**H836**  
L50 x W50 x H190  
filetto/thread M 10/1



**H819**  
L65 x W35 x H100  
filetto/thread M 10/1

**H820**  
L75 x W35 x H130  
filetto/thread M 10/1



**H818**  
L90 x W30 x H100  
filetto/thread M 10/1



**H809**  
L120 x W25 x H65  
filetto/thread M 10/1

**BRACCI E  
RICCIOLI  
PORTATUBO**  
TUBE HOLDER  
ARMS & CURLS

27-001	300	27-021	304	27-045	305	28-011	307
27-002	300	27-022	304	27-046	299	28-012	308
27-003	300	27-027	304	27-047	301	28-016	306
27-005	295	27-029	304	27-048	301	28-019	306
27-006	295	27-031	303	27-049	303	28-020	306
27-007	296	27-032	302	27-050	303	28-022	306
27-008	296	27-033	302	28-002	308	28-024	306
27-010	297	27-034	302	28-003	307	28-026	307
27-011	297	27-035	302	28-004	308	29-132	307
27-012	298	27-039	301	28-007	308	D262	306
27-014	298	27-042	305	28-008	308	D301	305
27-017	299	27-043	305	28-009	308		
27-019	301	27-044	303	28-010	307		



**BRACCIE  
RICCIOLI  
PORTATUBO**

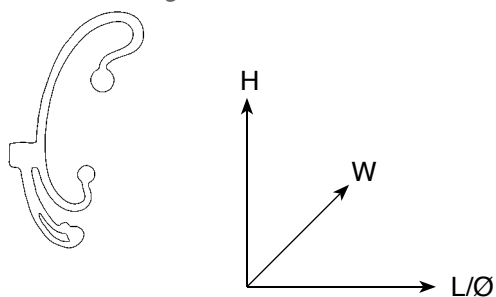
**TUBE HOLDER  
ARMS & CURLS**





**Letture misure:**

*Measurement legenda:*



L= Lunghezza/Length  
 H= Altezza/Height  
 W= Larghezza/Width  
 Ø= Diametro/Diameter

Tutti gli articoli filettati M 10/1 sono disponibili con filettatura 1/8 IPS. Per identificare la filettatura 1/8 IPS è necessario aggiungere il suffisso "-01" alla fine di ogni codice articolo.

*All Framon threaded articles are M10/1 type; 1/8 IPS thread version is available on customer demand. To obtain 1/8 IPS suffix "-01" must be added at the end of the article code.*

Esempio - Example:

22-001  
 22-001-01

filetto/thread M 10/1  
 filetto/thread 1/8 IPS



**BRACCI E RICCIOLI PORTATUBO**  
TUBE HOLDER ARMS & CURLS**27-005**

L140 x W17 x H220  
filetto/thread M 10/1  
alloggio tubo/tube housing Ø10,2

**27-006**

L125 x W16 x H220  
filetto/thread M 10/1  
alloggio tubo/tube housing Ø10,2



**27-008**

L95 x W18 x H195  
filetto/thread M 10/1  
alloggio tubo/tube housing Ø10,2



**27-007**

L100 x W20 x H200  
filetto/thread M 10/1  
alloggio tubo/tube housing Ø10,2

**BRACCI E RICCIOLI PORTATUBO**  
**TUBE HOLDER ARMS & CURLS**



**27-010**  
 L105 x W16 x H200  
 filetto/thread M 10/1  
 alloggiamento tubo/tube housing Ø10,2



**27-011**  
 L120 x W17 x H260  
 filetto/thread M 10/1  
 alloggiamento tubo/tube housing Ø10,2



**27-012**

L90 x W18 x H230  
filetto/thread M 10/1  
alloggio tubo/tube housing Ø10,2



**27-014**

L75 x W16 x H190  
filetto/thread M 10/1  
alloggio tubo/tube housing Ø10,2

**BRACCI E RICCIOLI PORTATUBO**  
**TUBE HOLDER ARMS & CURLS**



**27-017**  
 L140 x W16 x H210  
 filetto/thread M 10/1  
 alloggiamento tubo/tube housing Ø10,2



**27-046**  
 L90 x W16 x H225  
 filetto/thread M 10/1  
 alloggiamento tubo/tube housing Ø10,2





**27-003**

L105 x W19 x H150  
filetto/thread M 10/1

**27-002**

L140 x W19 x H200  
filetto/thread M 10/1

**27-001**

L180 x W22 x H300  
filetto/thread M 10/1

**BRACCI E RICCIOLI PORTATUBO**  
**TUBE HOLDER ARMS & CURLS**



**27-047**  
 L85 x W17 x H180  
 filetto/thread M 10/1  
 alloggiamento tubo/tube housing Ø10,2



**27-048**  
 L75 x W17 x H155  
 filetto/thread M 10/1  
 alloggiamento tubo/tube housing Ø10,2



**27-019**  
 L120 x W17 x H170  
 filetto/thread M 10/1  
 alloggiamento tubo/tube housing Ø10,2



**27-039**  
 L100 x W17 x H170  
 filetto/thread M 10/1  
 alloggiamento tubo/tube housing Ø10,2



**27-032**  
 L110 x W16 x H170  
 filetto/thread M 10/1  
 alloggiamento tubo/tube housing Ø10,2



**27-035**  
 L100 x W16 x H170  
 filetto/thread M 10/1  
 alloggiamento tubo/tube housing Ø10,2



**27-033**  
 L90 x W16 x H160  
 filetto/thread M 10/1  
 alloggiamento tubo/tube housing Ø10,2



**27-034**  
 L100 x W15 x H160  
 filetto/thread M 10/1  
 alloggiamento tubo/tube housing Ø10,2

**BRACCI E RICCIOLI PORTATUBO**  
**TUBE HOLDER ARMS & CURLS**



**27-049**  
 L75 x W15 x H180  
 filetto/thread M 10/1  
 alloggiamento tubo/tube housing Ø10,2



**27-044**  
 L70 x W14 x H160  
 filetto/thread M 10/1  
 alloggiamento tubo/tube housing Ø10,2



**27-031**  
 L110 x W16 x H160  
 filetto/thread M 10/1  
 alloggiamento tubo/tube housing Ø10,2



**27-050**  
 L85 x W16 x H170  
 filetto/thread M 10/1  
 alloggiamento tubo/tube housing Ø10,2



**27-021**  
L95 x W16 x H140  
filetto/thread M 10/1



**27-022**  
L75 x W16 x H130  
filetto/thread M 10/1



**27-027**  
L65 x W17 x H135  
filetto/thread M 10/1



**27-029**  
L80 x W16 x H130  
filetto/thread M 10/1



**BRACCI E RICCIOLI PORTATUBO**  
**TUBE HOLDER ARMS & CURLS**



**27-045**  
 L100 x W16 x H235  
 filetto/thread M 10/1  
 alloggiamento tubo/tube housing Ø10,2



**27-042**  
 L50 x W20 x H145  
 1° filetto/first thread M 10/1  
 2° filetto/second thread M 10/1



**D301**  
 L170 x W22 x H115  
 filetto/thread M 10/1



**27-043**  
 L80 x W20 x H120  
 1° filetto/first thread M 10/1  
 2° filetto/second thread M 10/1



**28-024**  
L85 x W17 x H100  
filetto/thread M 10/1  
alloggio tubo/tube housing Ø10,2



**28-016**  
L75 x W17 x H100  
filetto/thread M 10/1  
alloggio tubo/tube housing Ø10,2



**28-020**  
L70 x W14 x H100  
filetto/thread M 10/1  
alloggio tubo/tube housing Ø10,2



**28-022**  
L90 x W20 x H100  
filetto/thread M 10/1  
alloggio tubo/tube housing Ø10,2

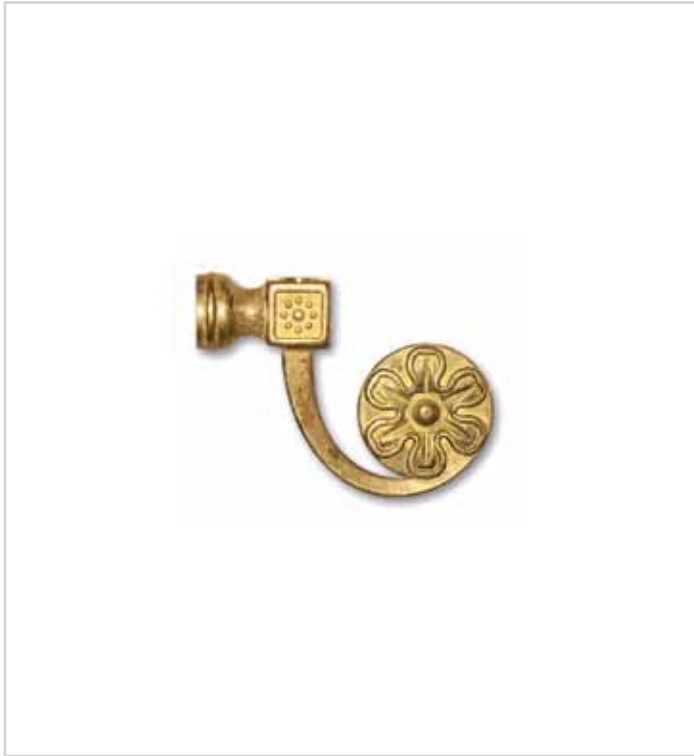


**D262**  
L85 x W18 x H100  
filetto/thread M 10/1  
alloggio tubo/tube housing Ø10,2



**28-019**  
L65 x W15 x H110  
filetto/thread M 10/1  
alloggio tubo/tube housing Ø10,2

**BRACCI E RICCIOLI PORTATUBO**  
**TUBE HOLDER ARMS & CURLS**



**29-132**  
 L73 x W20 x H55  
 filetto/thread M 10/1  
 alloggiamento tubo/tube housing Ø10,2



**28-026**  
 L45 x W19 x H50  
 filetto/thread M 10/1  
 alloggiamento tubo/tube housing Ø10,2

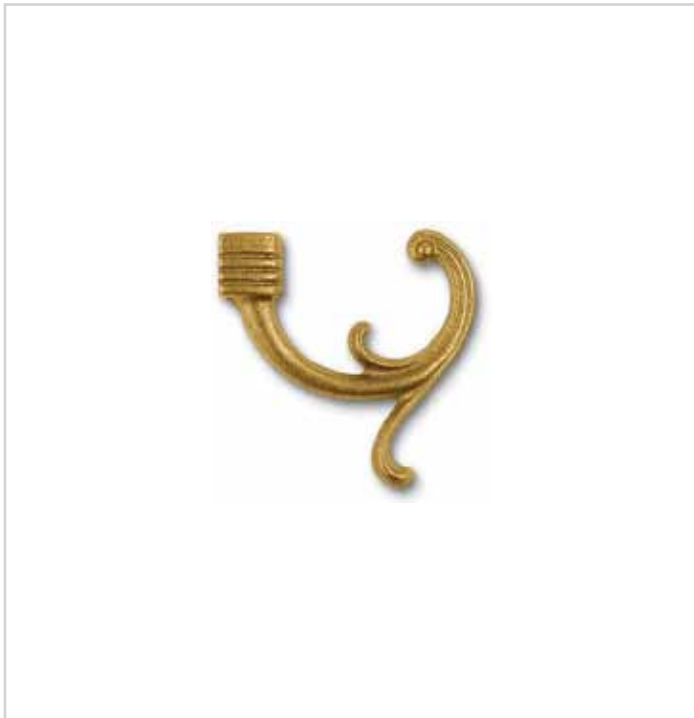


**28-003**  
 L80 x W20 x H75  
 filetto/thread M 10/1  
 alloggiamento tubo/tube housing Ø10,2



**28-011**  
 L45 x W15 x H65  
 filetto/thread M 10/1  
 alloggiamento tubo/tube housing Ø10,2

**28-010**  
 L65 x W16 x H90  
 filetto/thread M 10/1  
 alloggiamento tubo/tube housing Ø10,2



**28-002**  
 L70 x W17 x H75  
 filetto/thread M 10/1  
 alloggiamento tubo/tube housing Ø10,2



**28-009**  
 L45 x W14 x H40  
 filetto/thread M 10/1  
 alloggiamento tubo/tube housing Ø10,2

**28-007**  
 L60 x W14 x H60  
 filetto/thread M 10/1  
 alloggiamento tubo/tube housing Ø10,2

**28-008**  
 L55 x W14 x H45  
 filetto/thread M 10/1  
 alloggiamento tubo/tube housing Ø10,2



**28-004**  
 L65 x W19 x H55  
 filetto/thread M 10/1  
 alloggiamento tubo/tube housing Ø10,2



**28-012**  
 L50 x W15 x H55  
 filetto/thread M 10/1  
 alloggiamento tubo/tube housing Ø10,2



**BRACCI E RICCIOLI PORTATUBO**  
TUBE HOLDER ARMS & CURLS

