

**CAPITELLI**  
CAPITALS

40-050 529  
40-051 529  
40-052 529  
40-053 529  
40-060 529  
40-061 529  
40-062 529  
40-063 529  
S018 531

S072 530  
S084 531  
S085 530  
S086 531  
S088 530  
S089 530  
S090 530  
S091 530  
S092 531

S093 531  
S098 530  
S099 530  
S100 530  
S101 531  
X766 529  
Z096 529  
Z246 529  
Z252 527

Z253 527  
Z254 528  
Z255 528  
Z257 527  
Z258 528  
Z259 528  
Z283 528  
Z284 528



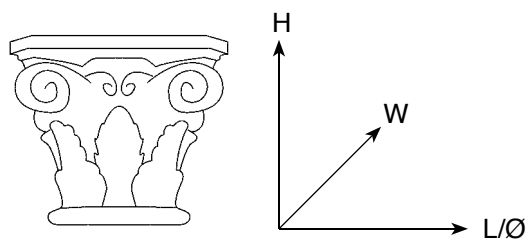


**CAPITELLI**  
**CAPITALS**





Lettura misure:  
Measurement legenda:

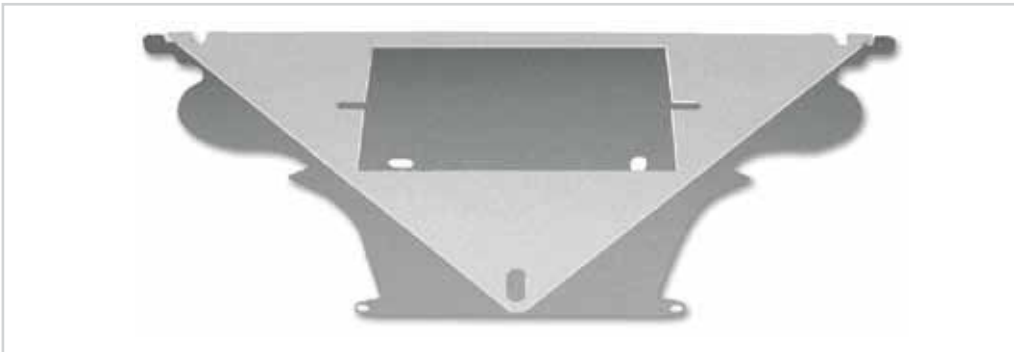


L= Lunghezza/Length  
H= Altezza/Height  
W= Larghezza/Width  
Ø= Diametro/Diameter

**Z252**

L220 x W220 x H185

p. appoggio sotto/lower support Ø145

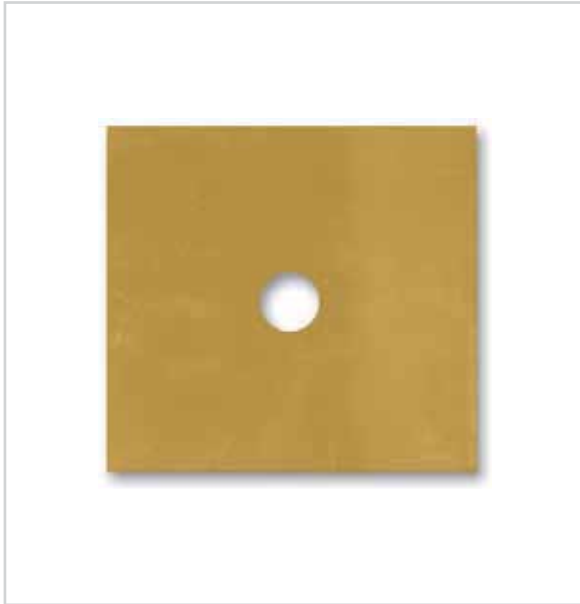
**Z257**

L280 x W140 x H182

**Z253**

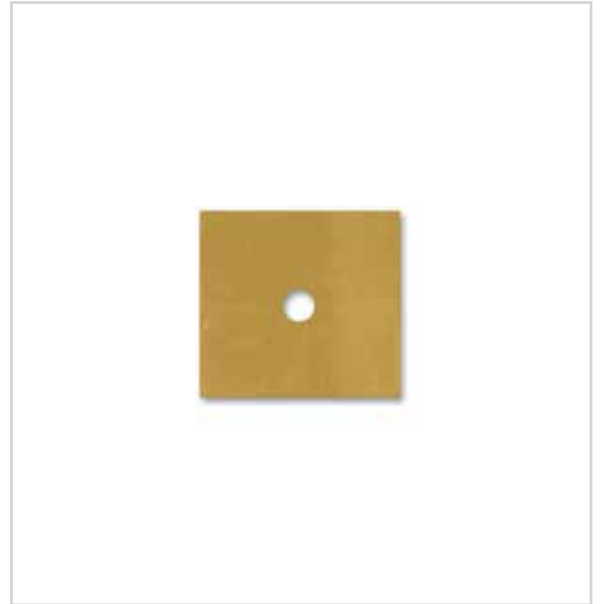
L285 x W142 x H185

1/2 pezzo/piece



**Z258** (per/for Z255)  
L75 x W1,5 x H75 - foro/hole Ø11

**Z259** (per/for Z254)  
L90 x W1,5 x H90 - foro/hole Ø11

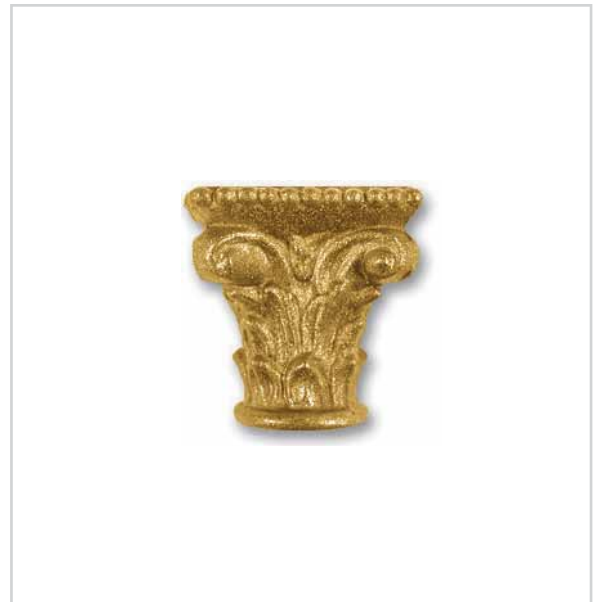


**Z284** (per/for Z283)  
L40 x W1,5 x H40 - foro/hole Ø10,5



**Z255**  
L88 x W88 x H72  
foro/hole Ø10,5  
p. appoggio sotto/lower support Ø60

**Z254**  
L103 x W103 x H87  
foro/hole Ø10,5  
p. appoggio sotto/lower support Ø70



**Z283**  
L50 x W50 x H50  
foro/hole Ø10,5  
p. appoggio sotto/lower support Ø30





**40-060** (per/for 40-051)  
Ø28 x 3



**X766** (per/for Z096 - Z246)  
L55 x W1,5 x H55  
foro/hole Ø11



**40-061** (per/for 40-051)  
L60 x W3 x H60

**40-063** (per/for 40-053)  
L90 x W3 x H90

**40-062** (per/for 40-052)  
L65 x W3 x H65



**Z246**  
L60 x W60 x H48  
filetto/thread M 10/1  
p. appoggio sopra/upper support Ø45  
p. appoggio sotto/lower support Ø30



**40-050**  
L40 x W40 x H32  
p. appoggio sotto/lower support Ø30

**40-052**  
L75 x W75 x H60  
p. appoggio sotto/lower support Ø50

**40-051**  
L58 x W58 x H47  
p. appoggio sotto/lower support Ø40

**40-053**  
L90 x W90 x H70  
p. appoggio sotto/lower support Ø60



**Z096**  
L60 x W60 x H48  
foro/hole Ø10,5  
p. appoggio sotto/lower support Ø35



**S100**  
L70 x W70 x H28  
foro/hole Ø10,5  
p. appoggio sopra/upper support Ø60  
fresato/milled



**S091**  
L70 x W70 x H34  
foro/hole Ø10,5  
p. appoggio sopra/upper support Ø60  
fresato/milled



**S090**  
L72 x W72 x H34  
foro/hole Ø10,5  
p. appoggio sopra/upper support Ø62



**S099**  
L60 x W60 x H28  
foro/hole Ø10,5  
p. appoggio sopra/upper support Ø50  
fresato/milled



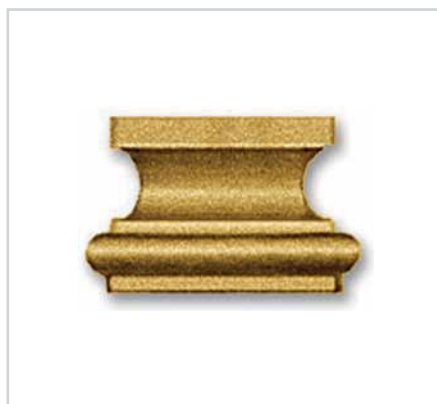
**S089**  
L60 x W60 x H34  
foro/hole Ø10,5  
p. appoggio sopra/upper support Ø50  
fresato/milled



**S088**  
L62 x W62 x H34  
foro/hole Ø10,5  
p. appoggio sopra/upper support Ø52



**S098**  
L50 x W50 x H31  
foro/hole Ø10,5  
p. appoggio sopra/upper support Ø40  
fresato/milled



**S085**  
L50 x W50 x H31  
foro/hole Ø10,5  
p. appoggio sopra/upper support Ø40  
fresato/milled



**S072**  
L52 x W52 x H31  
foro/hole Ø10,5  
p. appoggio sopra/upper support Ø42



**S101**  
L33 x W33 x H20  
foro/hole Ø11  
p. appoggio sopra/upper support Ø26  
p. appoggio sotto/lower support Ø26  
fresato/milled



**S086**  
L33 x W33 x H20  
foro/hole Ø11  
p. appoggio sopra/upper support Ø26  
p. appoggio sotto/lower support Ø26



**S093**  
L52 x W52 x H14  
p. appoggio sopra/upper support Ø42



**S018**  
L52 x W52 x H45  
foro/hole Ø10,5  
p. appoggio sotto/lower support Ø42



**S084**  
L50 x W50 x H45  
foro/hole Ø10,5  
p. appoggio sotto/lower support Ø40  
fresato/milled

