

LANTERNE |
LANTERNS |

30-007 343
30-009 341
30-010 342
30-011 346
30-014 354
30-015 354
30-023 364
30-024 362
30-026 352
30-027 352

30-030 355
30-032 355
30-034 353
30-035 346
30-036 347
30-038 343
30-040 349
30-044 355
30-047 350
30-048 351

30-050 344
30-054 348
30-055 348
30-056 349
30-057 344
30-058 344
30-059 344
30-060 342
30-061 360
30-062 357

30-063 356
30-064 359
30-065 358
30-066 356
H704 345
P042 361
P050 363
Z181 365

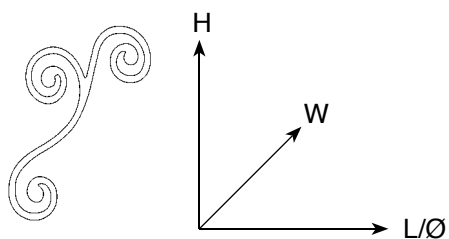


LANTERNE
LANTERNS



Lettura misure:

Measurement legenda:



L= Lunghezza/Length

H= Altezza/Height

W= Larghezza/Width

Ø= Diametro/Diameter

Tutti gli articoli filettati M 10/1 sono disponibili con filettatura 1/8 IPS. Per identificare la filettatura 1/8 IPS è necessario aggiungere il suffisso "-01" alla fine di ogni codice articolo.

All Framon threaded articles are M10/1 type; 1/8 IPS thread version is available on customer demand. To obtain 1/8 IPS suffix "-01" must be added at the end of the article code.

Esempio - Example:

30-009

30-009-01

filetto/thread M 10/1

filetto/thread 1/8 IPS

**30-009**

L150 x W18 x H290
filetto/thread M 10/1



30-010
L155 x W20 x H240
filetto/thread M 10/1



30-060
L140 x W15 x H220
filetto/thread M 10/1



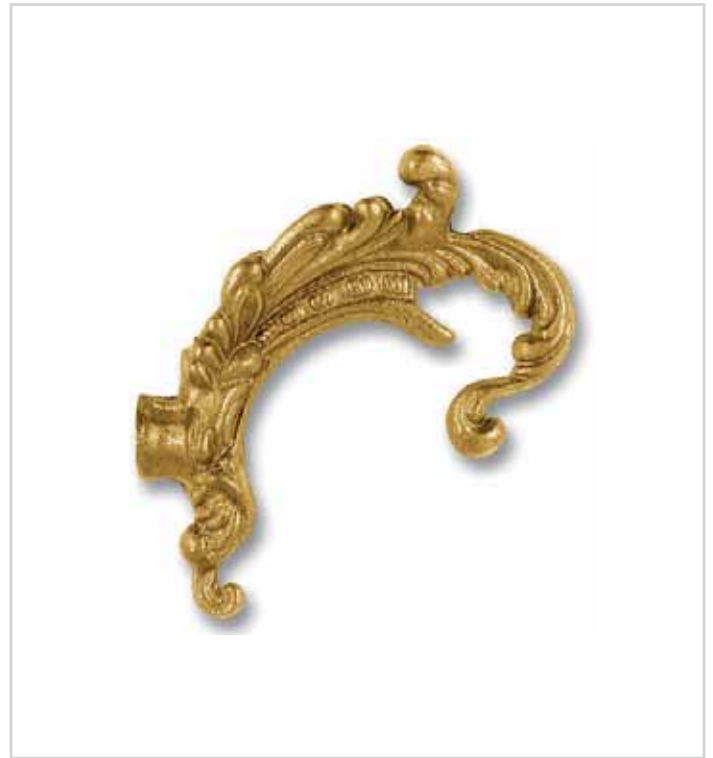
30-038
L145 x W18 x H250
filetto/thread M 10/1



30-007
L130 x W18 x H220
filetto/thread M 10/1



30-057
L70 x W16 x H115
filetto/thread M 10/1



30-050
L95 x W33 x H100
filetto/thread M 10/1



30-059
L100 x W16 x H130
filetto/thread M 10/1



30-058
L80 x W18 x H150
filetto/thread M 10/1

**H704**

L150 x W20 x H220
filetto/thread M 10/1



30-011
L160 x W16 x H180
filetto/thread M 10/1



30-035
L90 x W14 x H220

**30-036**

L145 x W18 x H290
filetto/thread M 10/1



30-054
L100 x W12 x H290



30-055
L55 x W8 x H200

**30-056**

L80 x W14 x H200
filetto/thread M 10/1

**30-040**

L190 x W16 x H160
filetto/thread M 10/1



30-047

L150 x W20 x H390
filetto/thread M 10/1

**30-048**

L155 x W20 x H410
filetto/thread M 10/1



30-027
L140 x W18 x H200
filetto/thread M 10/1



30-026
L165 x W18 x H200
filetto/thread M 10/1

**30-034**

L160 x W18 x H240
filetto/thread M 10/1



30-015

L210 x W55 x H135
filetto/thread M 10/1



30-014

L205 x W40 x H125
filetto/thread M 10/1



30-032
L165 x W18 x H185
filetto/thread M 10/1



30-044
L130 x W16 x H140
filetto/thread M 10/1



30-030
L150 x W18 x H160
filetto/thread M 10/1



30-066
L200 x W14 x H240



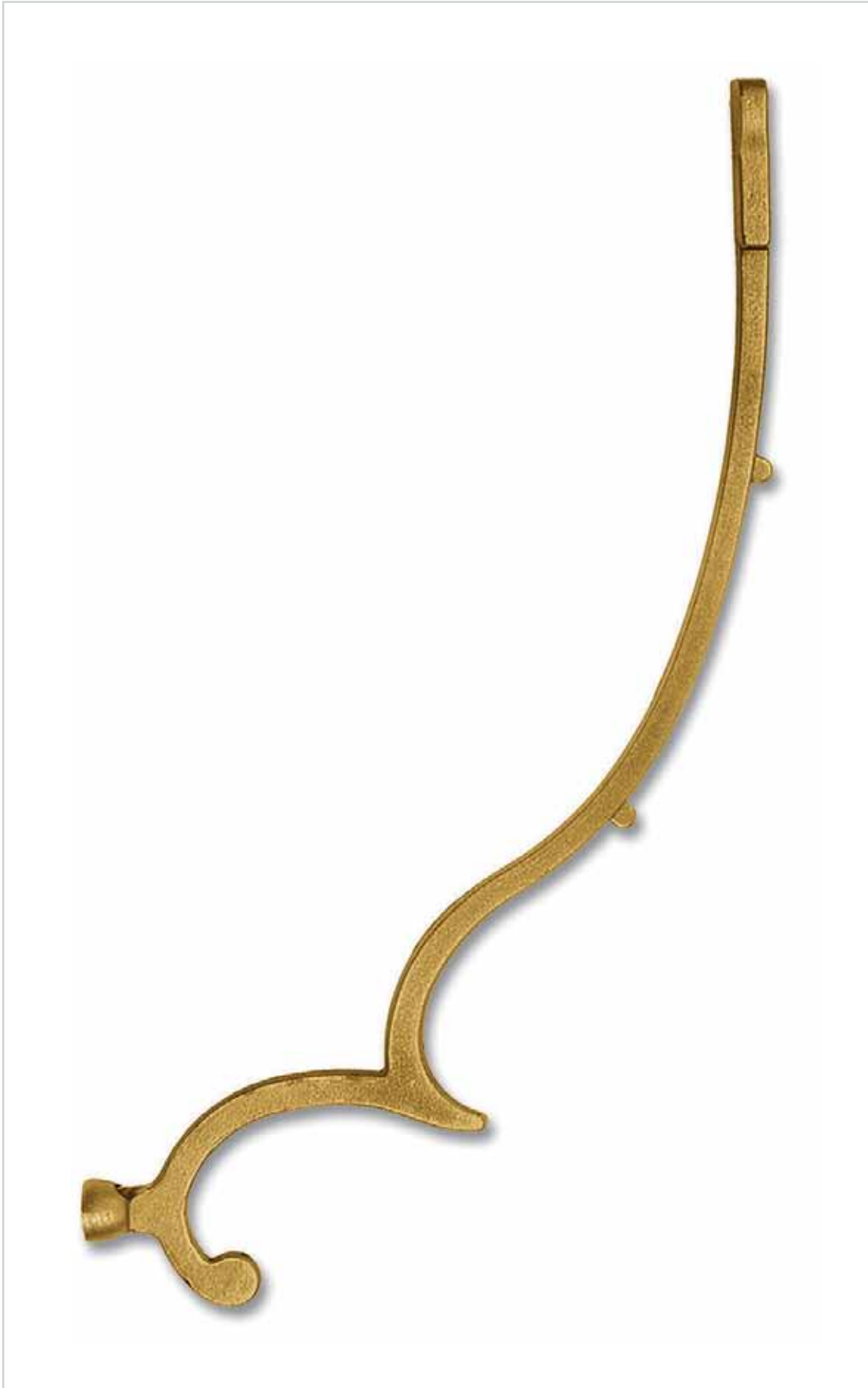
30-063
L180 x W16 x H260
filetto/thread M 10/1

**30-062**L220 x W16 x H320
filetto/thread M 10/1



30-065

L165 x W16 x H290
filetto/thread M 10/1

**30-064**L185 x W16 x H325
filetto/thread M 10/1



30-061

L240 x W16 x H300
filetto/thread M 10/1

**P042**

L230 x W20 x H290
primo foro/*first hole* Ø11



30-024
L280 x W20 x H290
primo foro/*first hole* Ø11

**P050**

L380 x W20 x H500
filetto/thread M 10/1



30-023

L290 x W20 x H320

primo foro/*first hole* Ø11



Z181
L175 x W50 x H390