

PORTACANDELE
CANDLE HOLDER

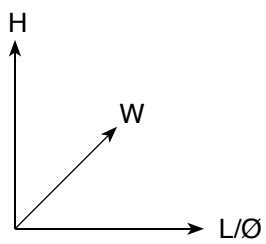
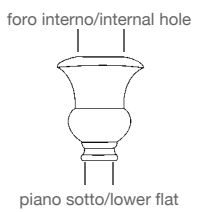
19-001	162	19-019-10	166	K055	164	K086	166
19-002	162	19-020	164	K057	161	K087	166
19-004	162	19-021	164	K066	166	K088	161
19-005	162	K001	163	K067	166	K089	162
19-006	161	K005	161	K069	163	K090	162
19-007	163	K006	164	K070	164	K091	162
19-008	165	K007	163	K074	165	K092	165
19-009	163	K008	161	K077	165	K096	166
19-010	165	K009	161	K079	163	K102	163
19-011	165	K016	163	K080	165	K103	161
19-013	164	K020	164	K081	166	Z280	167
19-015	164	K035	163	K082	166	Z281	167
19-016	164	K042	165	K083	166	Z282	162
19-017	165	K044	161	K084	166	Z282	167
19-019	166	K045	161	K085	166		



PORTACANDELE
CANDLE HOLDER



Lettura misure:
Measurement legenda:

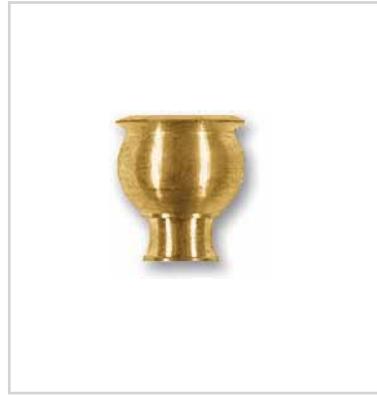


L= Lunghezza/Length
H= Altezza/Height
W= Larghezza/Width
Ø= Diametro/Diameter

PORTACANDELE
CANDLE HOLDER



K005
Ø25 x H27
filetto/thread M 10/1
piano sotto/lower flat Ø14
foro interno/internal hole Ø18



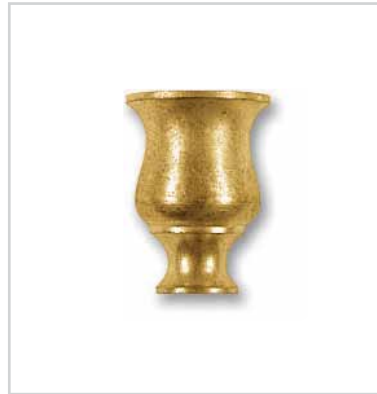
K044
Ø26 x H28
filetto/thread M 10/1
piano sotto/lower flat Ø15
foro interno/internal hole Ø19



K008
Ø30 x H35
filetto/thread M 10/1
piano sotto/lower flat Ø19
foro interno/internal hole Ø19



K045
Ø27 x H40
filetto/thread M 10/1
piano sotto/lower flat Ø15
foro interno/internal hole Ø19



K009
Ø30 x H40
filetto/thread M 10/1
piano sotto/lower flat Ø17
foro interno/internal hole Ø19,5



K103
Ø30 x H48
filetto/thread M 10/1
piano sotto/lower flat Ø15
foro interno/internal hole Ø21,5



K088
Ø36 x H38
filetto/thread M 10/1
piano sotto/lower flat Ø16
foro interno/internal hole Ø27



K057
Ø28 x H39
filetto/thread M4
piano sotto/lower flat Ø11
foro interno/internal hole Ø19,5



19-006
Ø28 x H40
filetto/thread M 10/1
piano sotto/lower flat Ø15
foro interno/internal hole Ø22,5



K089
 Ø38 x H40
 filetto/thread M 10/1
 piano sotto/lower flat Ø16
 foro interno/internal hole Ø22

K090
 Ø40 x H45
 filetto/thread M 10/1
 piano sotto/lower flat Ø16
 foro interno/internal hole Ø22

K091
 Ø49 x H55
 filetto/thread M 10/1
 piano sotto/lower flat Ø19
 foro interno/internal hole Ø25



Z282
 L45 x W45 x H40
 piano sotto/lower flat Ø14
 foro interno/internal hole Ø32
 primo foro/first hole Ø10,5



19-002
 Ø45 x H38
 piano sotto/lower flat Ø16
 foro interno/internal hole Ø22,5
 primo foro/first hole Ø10,5

19-001
 Ø56 x H50
 piano sotto/lower flat Ø22
 foro interno/internal hole Ø29
 primo foro/first hole Ø10,5



19-005
 Ø31 x H45
 filetto/thread M 10/1
 piano sotto/lower flat Ø17
 foro interno/internal hole Ø22,5

19-004
 Ø36 x H55
 filetto/thread M 10/1
 piano sotto/lower flat Ø19
 foro interno/internal hole Ø27,5



PORTACANDELE
CANDLE HOLDER



K007
Ø30 x H42
filetto/thread M 10/1
piano sotto/lower flat Ø17
foro interno/internal hole Ø19,5



K001
Ø30 x H40
filetto/thread M 10/1
piano sotto/lower flat Ø18
foro interno/internal hole Ø22,5



K016
Ø36 x H40
filetto/thread M 10/1
piano sotto/lower flat Ø21
foro interno/internal hole Ø31



19-007
Ø33 x H76
filetto/thread M 10/1
piano sotto/lower flat Ø19
foro interno/internal hole Ø20,5



K102
Ø37 x H42
filetto/thread M4
piano sotto/lower flat Ø22
foro interno/internal hole Ø22,5



K035
Ø38 x H58
filetto/thread M 10/1
piano sotto/lower flat Ø20
foro interno/internal hole Ø18



K069
Ø48 x H60
filetto/thread M 10/1
piano sotto/lower flat Ø18
foro interno/internal hole Ø30,5



19-009
Ø28 x H50
filetto/thread M 10/1
piano sotto/lower flat Ø15
foro interno/internal hole Ø22



K079
Ø50 x H63
filetto/thread M 10/1
piano sotto/lower flat Ø30
foro interno/internal hole Ø40,5



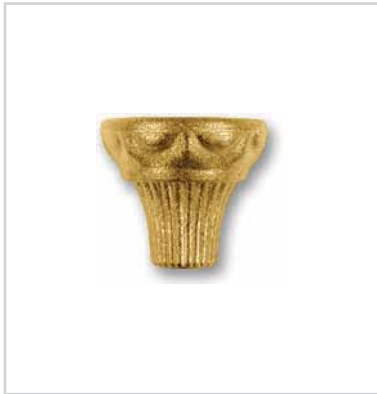
K070
 Ø48 x H60
 filetto/thread M 10/1
 piano sotto/lower flat Ø18
 foro interno/internal hole Ø29,5



K020
 Ø30 x H50
 filetto/thread M 10/1
 piano sotto/lower flat Ø15
 foro interno/internal hole Ø21



19-016
 Ø45 x H55
 filetto/thread M 10/1
 piano sotto/lower flat Ø16
 foro interno/internal hole Ø23



19-015
 Ø35 x H30
 filetto/thread M 10/1
 piano sotto/lower flat Ø12
 foro interno/internal hole Ø29



19-021
 Ø35 x H36
 filetto/thread M 10/1
 piano sotto/lower flat Ø16
 foro interno/internal hole Ø28



K006
 Ø32 x H38
 filetto/thread M 10/1
 piano sotto/lower flat Ø14
 foro interno/internal hole Ø28



19-013
 Ø30 x H40
 filetto/thread M 10/1
 piano sotto/lower flat Ø14
 foro interno/internal hole Ø20



K055
 Ø35 x H45
 filetto/thread M 10/1
 piano sotto/lower flat Ø18
 foro interno/internal hole Ø27,5



19-020
 Ø40 x H46
 filetto/thread M 10/1
 piano sotto/lower flat Ø16
 foro interno/internal hole Ø30

PORTACANDELE
CANDLE HOLDER



19-010
Ø35 x H38
filetto/thread M 10/1
piano sotto/lower flat Ø15
foro interno/internal hole Ø23



19-011
Ø35 x H40
filetto/thread M 10/1
piano sotto/lower flat Ø12
foro interno/internal hole Ø20



K077
L40 x W44 x H48
filetto/thread M 10/1
piano sotto/lower flat Ø21
foro interno/internal hole Ø34



K080
Ø70 x H42
piano sotto/lower flat Ø17
foro interno/internal hole Ø61
primo foro/first hole Ø10,5



K074
Ø40 x H55
filetto/thread M 10/1
piano sotto/lower flat Ø25
foro interno/internal hole Ø34



K092
Ø38 x H62
filetto/thread M 10/1
piano sotto/lower flat Ø18
foro interno/internal hole Ø32



K042
Ø43 x H63
filetto/thread M 10/1
piano sotto/lower flat Ø17
foro interno/internal hole Ø26,5



19-017
Ø40 x H60
filetto/thread M 10/1
piano sotto/lower flat Ø16
foro interno/internal hole Ø27,5



19-008
Ø40 x H62
piano sotto/lower flat Ø18
foro interno/internal hole Ø30
primo foro/first hole Ø10,5



K084
 Ø36 x H38
 filetto/thread M 10/1
 piano sotto/lower flat Ø15
 foro interno/internal hole Ø21,5

K085
 Ø40 x H45
 filetto/thread M 10/1
 piano sotto/lower flat Ø16
 foro interno/internal hole Ø21

K086
 Ø49 x H55
 filetto/thread M 10/1
 piano sotto/lower flat Ø19
 foro interno/internal hole Ø26,5



K081
 L42 x W42 x H43
 filetto/thread M 10/1
 piano sotto/lower flat Ø16
 foro interno/internal hole Ø22,5

K082
 L44 x W44 x H50
 filetto/thread M 10/1
 piano sotto/lower flat Ø16
 foro interno/internal hole Ø22,5

K083
 L52 x W52 x H62
 filetto/thread M 10/1
 piano sotto/lower flat Ø18
 foro interno/internal hole Ø27,5



K066
 Ø37 x H50
 filetto/thread M 10/1
 piano sotto/lower flat Ø17
 foro interno/internal hole Ø21

K067
 Ø54 x H70
 filetto/thread M 10/1
 piano sotto/lower flat Ø22
 foro interno/internal hole Ø29



19-019
 Ø56 x H70
 filetto/thread M 10/1
 piano sotto/lower flat Ø15
 foro interno/internal hole Ø32



19-019-10
 L26 x W26 x H10
 accessorio per portacandela
 candle holder accessory
 piano sotto/lower flat Ø13
 primo foro/first hole Ø10,5



K087
 Ø32 x H75
 foro interno/internal hole Ø27

K096
 Ø32 x H100
 foro interno/internal hole Ø27

PORTACANDELE
CANDLE HOLDER**Z282**

L45 x W45 x H40

piano sotto/lower flat $\varnothing 14$ - foro interno/internal hole $\varnothing 32$ - primo foro/first hole $\varnothing 10,5$ **Z281**

L80 x W80 x H40

piano sotto/lower flat $\varnothing 20$ - foro interno/internal hole $\varnothing 60$ - primo foro/first hole $\varnothing 10,5$ **Z280**

L100 x W100 x H30

piano sotto/lower flat $\varnothing 20$ - foro interno/internal hole - $\varnothing 55$ - primo foro/first hole $\varnothing 10,5$ 