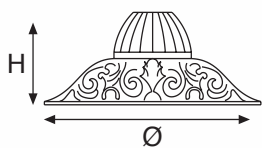


# E

ARTICOLO ITEM	Ø	H
E 4	200	69
E 5	140	58
E 6	100	41
E 7	80	34



E.4

76



E.5



E.6



E.7

ARTICOLO Ø H  
ITEM

ARTICOLO ITEM	Ø	H
E 27	50	10
E 28	60	13
E 29	70	15
E 30	80	16
E 31	90	20
E 32	100	21
E 33	120	26
E 34	140	30



E.34



E.33



E.30



E.29



E.32



E.28



E.31



E.27

# E



E.23



E.22



E.21



E.20



E.19

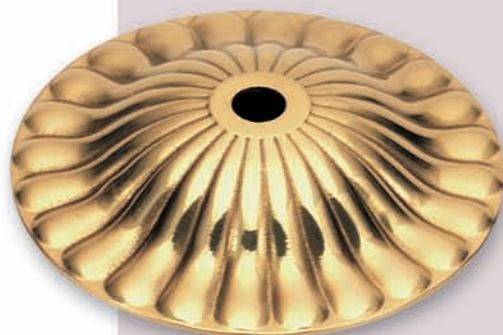


E.18

ARTICOLO ITEM	Ø	H
E 18	50	26
E 19	60	30
E 20	70	34
E 21	80	40
E 22	90	45
E 23	100	48



E.89



E.86



E.87



E.88



E.128



E.129

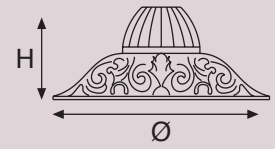
ARTICOLO ITEM	Ø	H	Ø SUP Ø TOP
E 86	100	19	-
E 87	80	15	-
E 88	60	12	-
E 89	50	10	-
E 128	80	6	50,5
E 129	100	12	50,5



# E



E.46



E.47



E.48



E.49

80



E.45



E.44



E.43

ARTICOLO ITEM	Ø	H
E 43	80	22
E 44	100	27
E 45	140	28
E 46	80	34
E 47	100	42
E 48	140	60
E 49	160	67



E.109



E.147



E.108



E.107



E.106



E.105



E.104

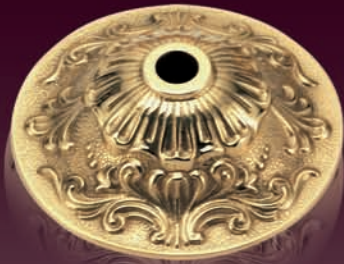


E.103



E.146

ARTICOLO ITEM	Ø	H
E 103	80	27
E 104	90	31
E 105	100	34
E 106	110	37
E 107	120	41
E 108	140	47
E 109	160	53
E 146	60	22
E 147	200	60



E.68 ø 80



E.69 ø 100



E.70 ø 140



E.71 ø 200

ARTICOLO Ø H  
ITEM

E 68	80	25
E 69	100	30
E 70	140	40
E 71	200	60

ARTICOLO ITEM	Ø	H
E 140	240	65
E 141	307	77



E.140 ø 240



E.141 ø 307



# E



E.66 ø 100



E.67 ø 140



E.65 ø 80



E.81

84



E.134 ø 140



E.127 ø 100



E.126 ø 80



E.133 ø 60

ARTICOLO ITEM	Ø MAX	Ø SUP. Ø TOP	H
E 65	80	-	25
E 66	100	-	30
E 67	140	-	40
E 81	114	-	49
E 126	80	50	20
E 127	100	60	20
E 133	60	40	15
E 134	140	80	25



E.145 ø 200



E.144 ø 160



E.143 ø 120



E.142 ø 100



L.123 ø 80



L.121 ø 60

ARTICOLO ITEM	Ø	H
E 142 (•)	100	38
E 143 (•)	120	44
E 144 (•)	160	54
E 145 (•)	200	65
L 121 (•)	60	27
L 123	80	36
(•)Not available for USA market		



# E



E.57



E.58



E.94 ø 120



E.117 ø 100

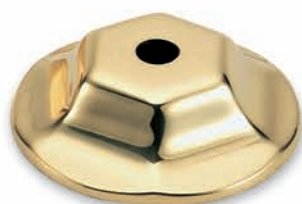


E.95



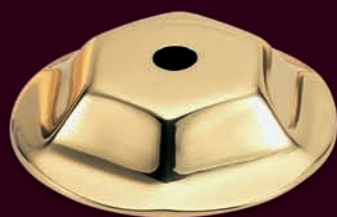
E.96

ARTICOLO ITEM	Ø	H	Ø SUP Ø TOP
E 57	100	25	
E 58	80	20	
E 94	120	53	
E 95	140	37	85
E 96	140	36	85
E 117	100	46	

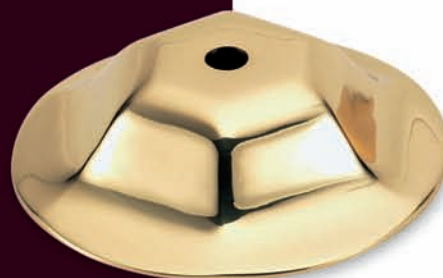


E.118 ø 70

ARTICOLO ITEM	Ø	H	Ø SUP	FORI HOLES
E 110	80	20		
E 111	110	31		
E 112	140	29		
E 118	70	18		
E 120	90	30	35	
E 120-03	90	30	35	3 holes



E.110 ø 80



E.111 ø 110



E.112 ø 140



E.120 - 03



E.120

# E



E.84



E.85

ARTICOLO ITEM	Ø MAX	Ø INT	H
E 83	60	55	22
E 84	130	120	54
E 85	150	140	112
E 97	100	-	25
E 98	90	-	21
E 99	93	-	24
E 100	75	70	26



E.83

88



E.100



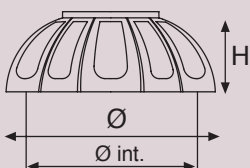
E.97



E.99



E.98





E.101



E.102

ARTICOLO Ø MAX Ø INT H  
ITEM

E 101	140	80	33
E 102	200	120	34
E 125	100	-	30
L 74	70	-	20



E.125



L.74

# E



E.62 ø 140



E.64 ø 140



E.50 ø 140  
E.72 TORN



E.51 ø 120  
E.73 TORN



E.52 ø 100  
E.74 TORN



E.53 ø 80  
E.75 TORN

90

ARTICOLO ITEM	Ø	H
E 50	140	54
E 51	120	43
E 52	100	34
E 53	80	28
E 62 Torn	140	55
E 64 Torn	140	70
E 72 Torn	140	54
E 73 Torn	120	43
E 74 Torn	100	80
E 75 Torn	80	28



E.60 ø 100

ARTICOLO ITEM	Ø	H
E 60	100	26
E 90	70	23
E 91	90	25
E 92	150	37
E 93	100	62

Articoli torniti / Machined items



E.92 ø 150



E.93 ø 100



E.91 ø 90

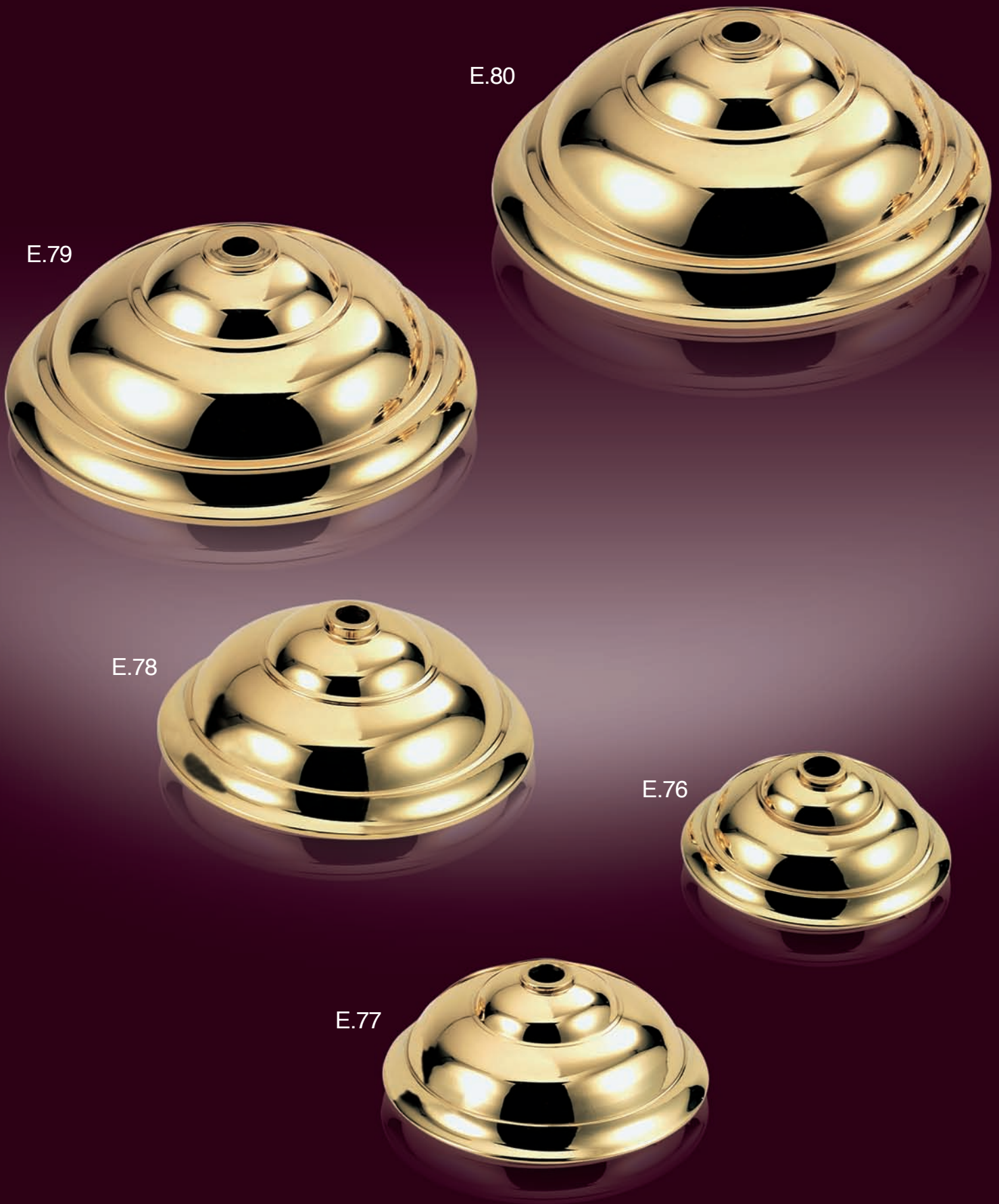


E.90 ø 70



ARTICOLO ITEM	Ø	H
E 76	80	29
E 77	100	37
E 78	120	45
E 79	140	52
E 80	160	58

Articoli torniti / Machined items





L.86 ø 100



L.85 ø 70



L.97 ø 120



L.93 ø 100



L.92 ø 80



L.96 ø 60



L.95 ø 50

ARTICOLO ITEM	Ø	H
L 85	70	20
L 86	100	28
L 92	80	11
L 93	100	14
L 95	50	8
L 96	60	8
L 97	120	17



E.115



E.116



E.114



E.113

94

ARTICOLO ITEM	Ø MAX	H	IMPOSTA SUP TOP COUNTERSINK
E 113	80	35	30
E 114	85	37	30
E 115	155	65	30
E 116	115	50	30
Z 125*	37	13	30

\* Imposta interna Ø 25,2  
Inside countersink Ø 25,2



Z.125

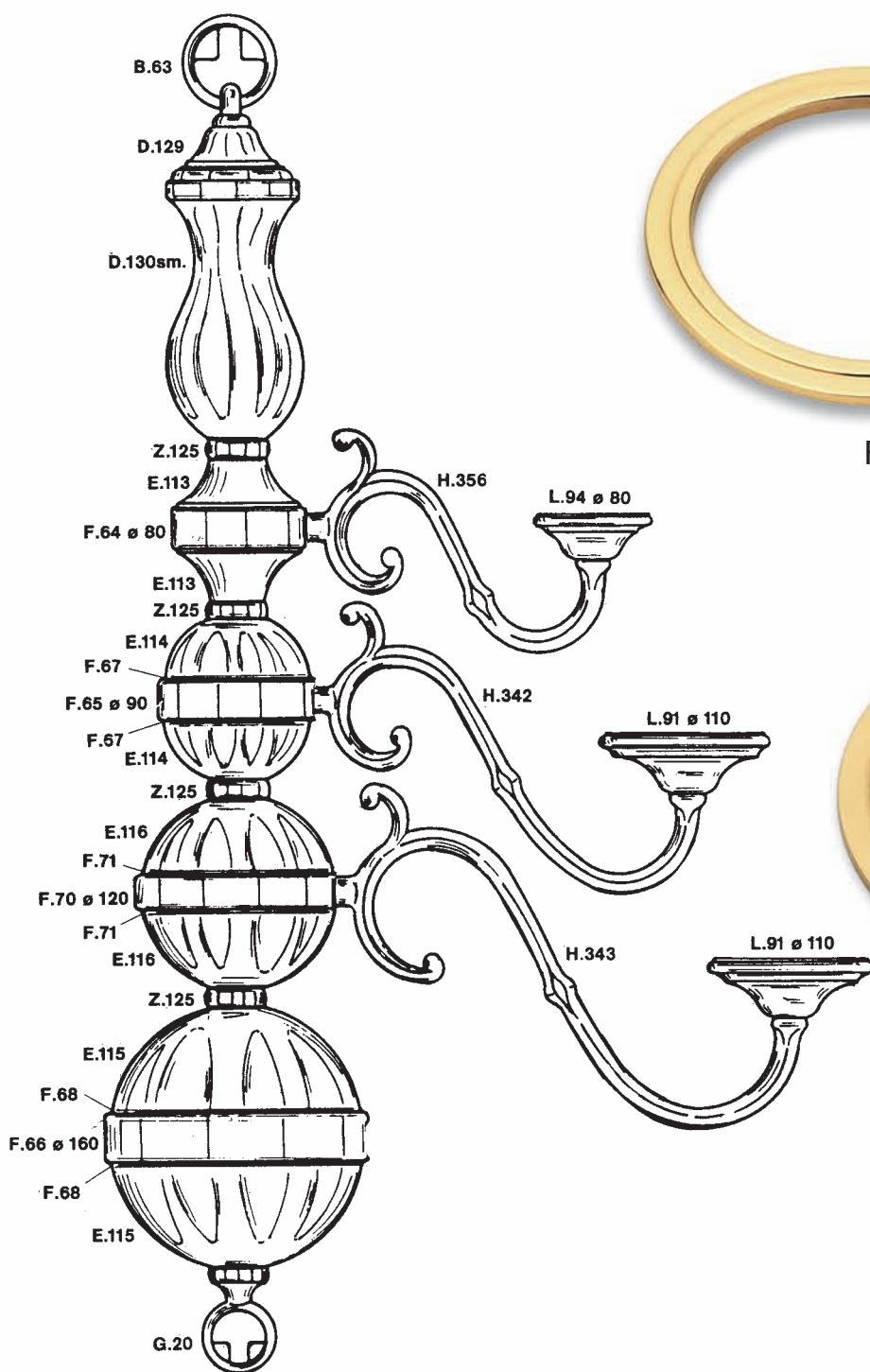
ARTICOLO ITEM	Ø MAX	H	Ø INT
F 67	90	3,5	70
F 68	160	3,5	130
F 71	120	3,5	92



F.67



F.71



Mod. NEWPORT completo  
h. cm. 81

Applique: R58



F.68





E.124  
Ø 307



E.139  
Ø 240



E.123  
Ø 160



E.122  
Ø 120



E.121  
Ø 100

96

ARTICOLO ITEM	Ø	H	FORO/FILETTO HOLE/THREAD
E 121	100	35	10,2
E 122	120	38	10,2
E 123	160	47	10,2
E 124	307	56	10x1
E 139	240	50	10x1

**Articoli torniti e satinati**  
Turned and grinded pieces

LASTRA DI OTTONE  
TURNED SPINNING BRASS

ARTICOLO ITEM	Ø	H
4117	307	57
4118	407	70
4126	200	50



4118  
Ø 407



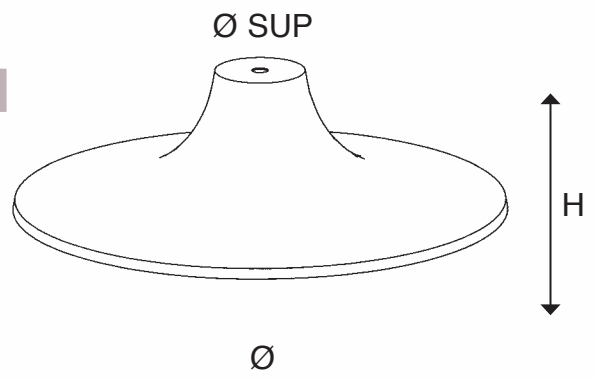
4117  
Ø 307



4126  
Ø 200

LASTRA DI OTTONE  
TURNED SPINNING BRASS

E



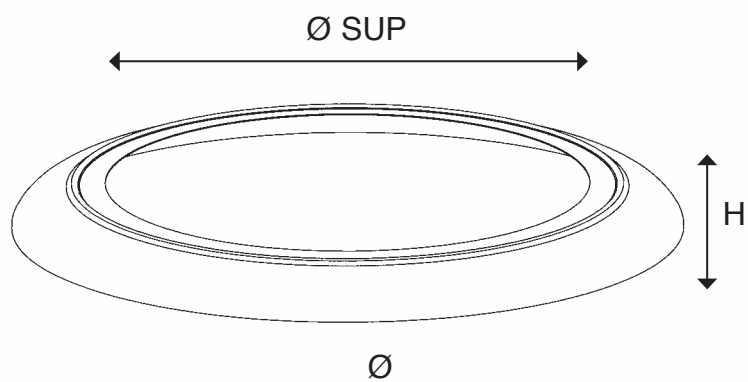
98

4116  
Ø 407



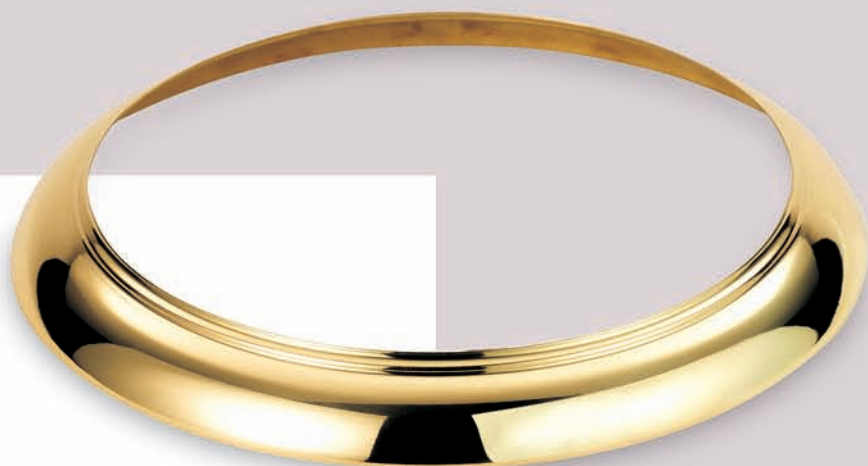
4115  
Ø 307

LASTRA DI OTTONE  
TURNED SPINNING BRASS



4119  
 $\varnothing$  507

ARTICOLO ITEM	$\varnothing$	H	$\varnothing$ SUP
4115	307	88	56
4116	407	105	56
4119	507	35	407
4156	307	28	250



4156  
 $\varnothing$  307



# E



E.1001



L.1001



E.1032



E.1002



E.1006 ø 100

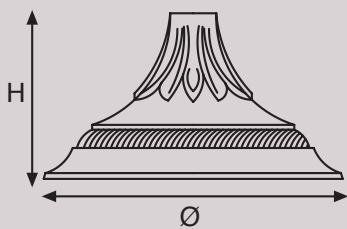


L.1002 ø 80

ARTICOLO ITEM	Ø	H
E 1001	110	60
E 1002	110	42
E 1006	100	37
E 1032	80	40
L 1001	90	45
L 1002	80	30

Bronze véritable

100



ARTICOLO ITEM	Ø	H
E 1003	140	60
E 1004	100	42
E 1005	80	34
L 1004	100	39
L 1005	80	32

Bronze véritable



E.1003



E.1004



E.1005



L.1004

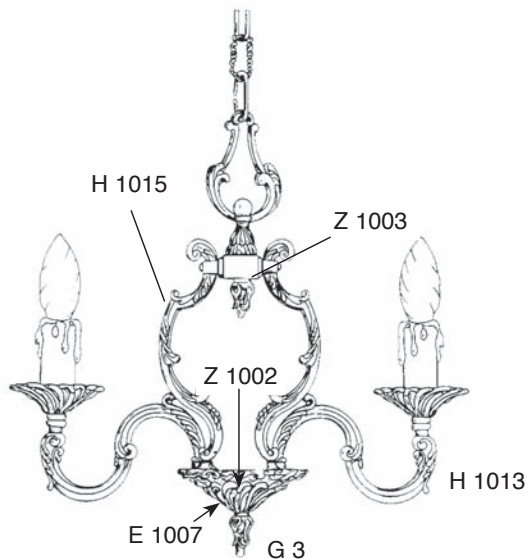


L.1005

# E



E.1007



Z.1002  
Z. 1002/5

Z.1003



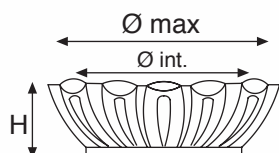
102



E.1017



E.1015



ARTICOLO ITEM	Ø	H	Ø INTERNO Ø INSIDE
E 1007	105	35	100
E 1015	112	58	95
E 1017	50	37	-
Z 1002	90	3	per 3 H 1013
Z 1002/5	90	3	per 5 H 1013
Z 1003	30		per 3 H 1015

Bronze véritable



E.1016



E.1021



F.1003



F.16



E.1024

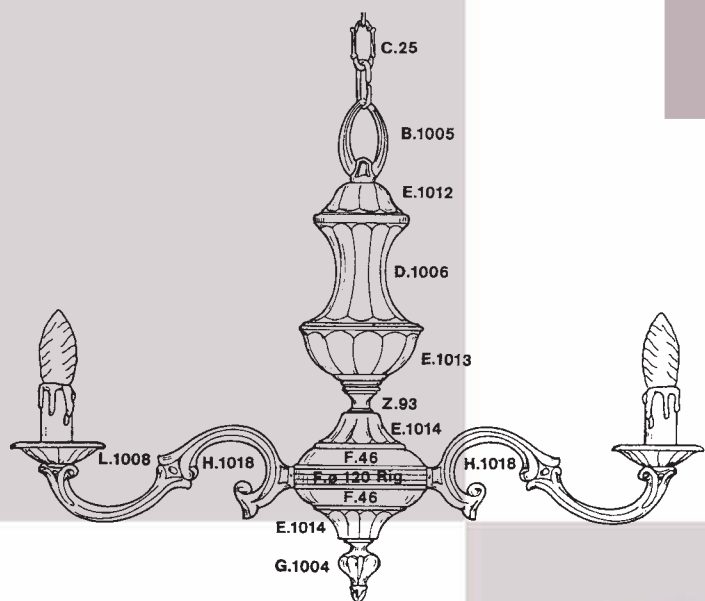


F.19

ARTICOLO ITEM	Ø	H	Ø INTERNO Ø INSIDE
E 1016	153	71	125
E 1021	90	40	70
E 1024	108	50	100
F 16	70	3	
F 19	100	3,5	
F 1003	125	3	

Bronze véritable

# E



E.1012



E.1014



E.1013



E.1025



E.1027



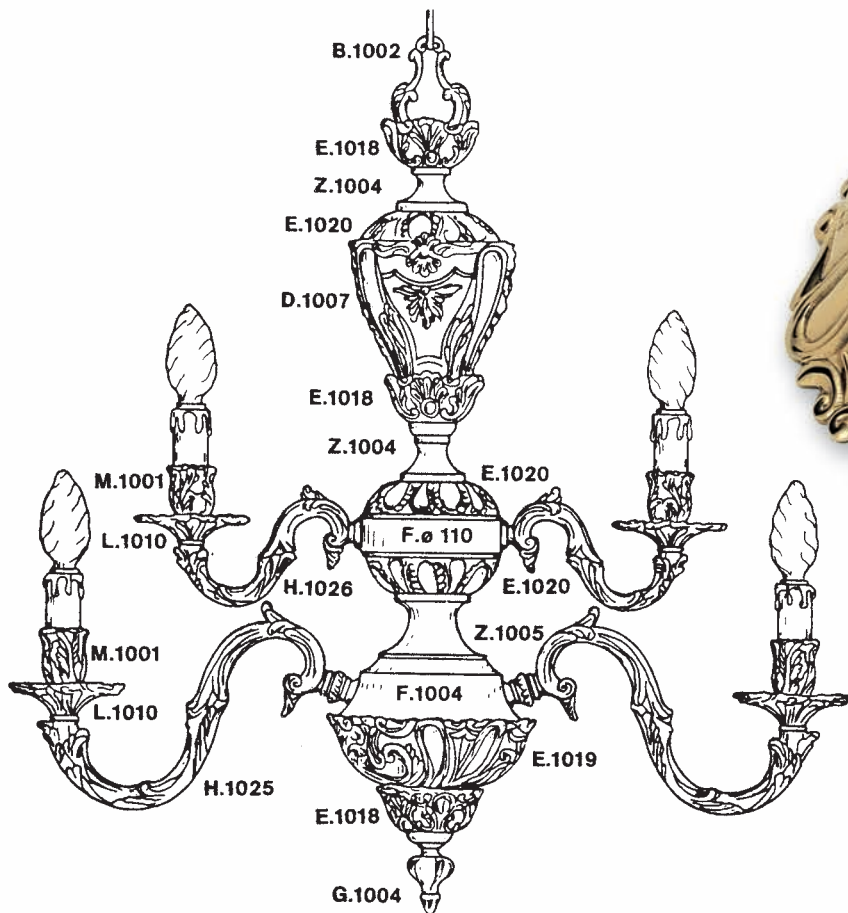
E.1026



E.1028

ARTICOLO ITEM	Ø	H	Ø SUP Ø TOP
E 1012	90	38	33
E 1013	117	57	40
E 1014	90	32	36
E 1025	80	26	22
E 1026	100	30	22
E 1027	80	35	28
E 1028	100	40	30

Bronze véritable



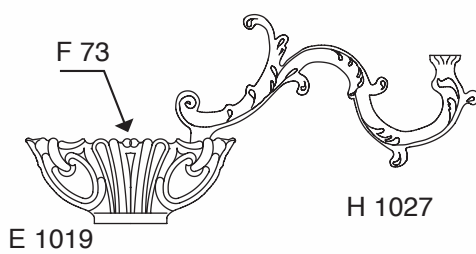
E.1019



E.1018

ARTICOLO ITEM	Ø	H	Ø INTERNO Ø INSIDE	Ø INFERIRE Ø BOTTOM
E 1018	82	43	60	24
E 1019	170	67	146	50
E 1020	110	33	100	59

Bronze véritable

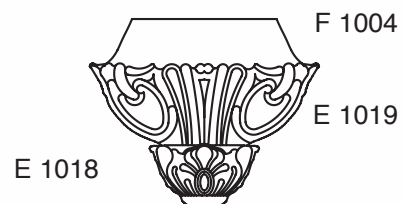


E 1019

H 1027

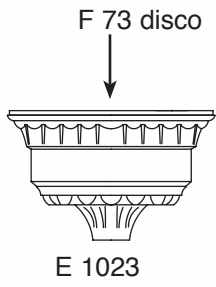


E.1020



E 1018

# E



E.1023

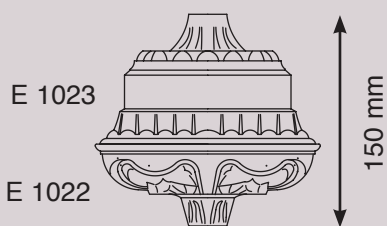


E.1022 Ø 160



E.1031 Ø 120

106



ARTICOLO ITEM	Ø	H	FILETTO / FORO THREAD / HOLE
E 1022	160	58	10,2
E 1023 TORN	158	93	10x1
E 1029	200	72	10x1
E 1030	300	92	10x1
E 1031	120	43	10,2

Bronze véritable