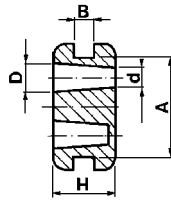
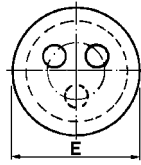


Passacavi Grommets

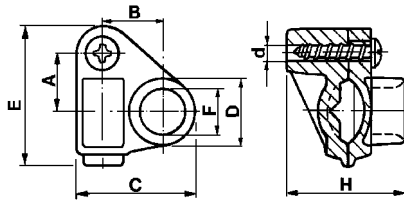


Materiale / Material

1 PVC

Codice / Code	Dimensioni / Dimensions (mm)							Fori chiusi Dead holes	Materiale / Material	Colore / Colour
	A	B	D	d	E	H				
6307/0/1	10	2	3	2	13	6	1	1	2 Nero Black	
6307/0/2	10	2	3	2	13	6	2	1	1	
6307/0/3	10	2	3	0	13	6	3	1	1	

Bloccacavi Cable clamps



Materiale / Material

5 Nylon 66

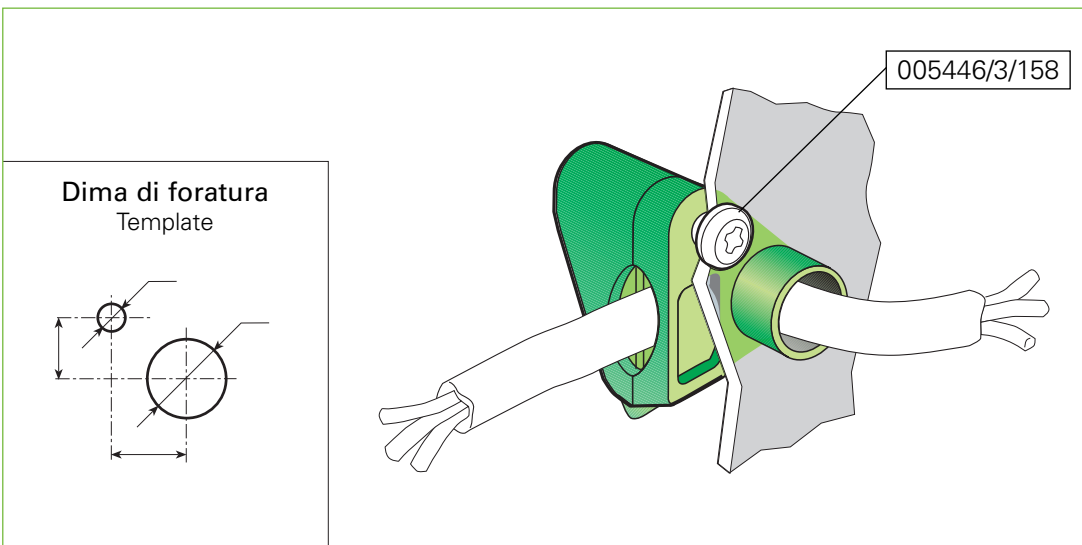
Approvati per l'utilizzo in Classe II
Approved for Classe II fittings

Codice / Code	Dimensioni / Dimensions (mm)									Materiale / Material	Colore / Colour	Omologato Certified	
	A	B	D1	d1	C	D	d	E	F				H
5463/7	9,5	9,5	11	4,2	18,5	10,5	3,5	21,7	7,2	18	1 Bianco White	2 Nero Black	<input checked="" type="checkbox"/> C.S. N°EH 229

I bloccacavi vengono forniti con vite autofilettante separata.
Per cavi: H03VV-F Ø min 4,8 - Ø max 6,5

Cable clamps are supplied with separate self-threading screw.
For cables: H03VV-F Ø min 4,8 - Ø max 6,5

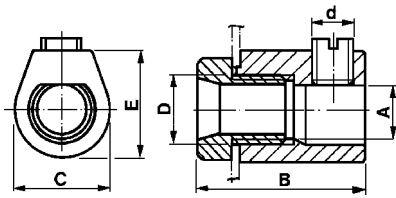
Esempio di utilizzazione Application example





Bloccacavi

Cable clamps



Materiale / Material

6 Nylon 66 RV

18 Polibutil R/AE

Approvati per l'utilizzo in Classe I

Approved for Classe I fittings

Codice / Code	Dimensioni / Dimensions (mm)							Colore / Colour		Omologato Certified
	A	B	C	D	d	E	T	1 Bianco White	2 Nero Black	
5465/8	4x6	19	12	M 8x1	M 6x1	12	8	Materiale Material → 6	6	
5020	5,6	20,5	14,5	M 10x1	M 7x1	14,5	15	6	6	
5020/7	7	21	13,5	M 10x1	M 7x1	16	15	6	6	C.S. N°EH 228 ☉
5126	9,5	31	18,5	M 13x1	M 8x1,25	20	15	6	6 18	C.S. N°EH 228 ☉

M 8x1: Coppia serraggio max = 90 N cm - M 10x1: Coppia serraggio max = 130 N cm - M 13x1: Coppia serraggio max = 150 N cm
I bloccacavi vengono forniti con grano filettato separato. - T = Kg carico strappo conduttore.

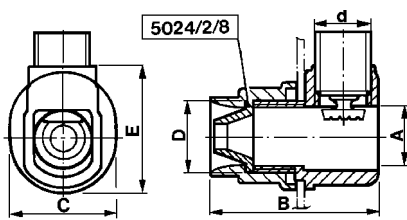
Articolo 5020/7: per cavi H03VV-F Ø min 4,8 - Ø max 6,5 e H03VVH2-F sez. min 3x4,8 - sez. max 3,9x6,4

Articolo 5126: per cavo H03VV-F/H05VV-F Ø min 8 - Ø max 9,5

M 8x1: Max tightening torque = 90 N cm - M 10x1: Max tightening torque = 130 N cm - M 13x1: Max tightening torque = 150 N cm
Cable clamps are supplied with separate threaded grub. - T = Lead bearable load Kgs.

Article 5020/7: for cables H03VV-F Ø min 4,8 - Ø max 6,5 and H03VVH2-F sect. min 3x4,8 - sect. max 3,9x6,4

Article 5126: for cable H03VV-F/H05VV-F Ø min 8 - Ø max 9,5



Materiale / Material

6 Nylon 66 RV

Approvati per l'utilizzo in Classe II

Approved for Classe II fittings

Codice / Code	Dimensioni / Dimensions (mm)							Colore / Colour		Omologato Certified
	A	B	C	D	d	E	T	1 Bianco White	2 Nero Black	
5346/2/09	9,5	29	21	M 13x1	M 8x1,25	22	20	Materiale Material → 6	6	
5024/28/15	14,8	41	27	M 18x1,5	M 14x1	22	30	6	6	
5024/2/15	14,8	41	27	M 18x1,5	M 14x1,5	30,5	30	6	6	C.S. N°EH 229 ☉

M 13x1: Coppia serraggio max = 150 N cm - M 18x1,5: Coppia serraggio max = 450 N cm

I bloccacavi vengono forniti con grano filettato separato. - T = Kg carico strappo conduttore.

Articolo 5346/2/09: per cavi H03VV-F/H05VV-F Ø min 4,8 - Ø max 9 e H03VVH2/H05VVH2-F sez. min 3x4,8 - sez. max 5x7,2

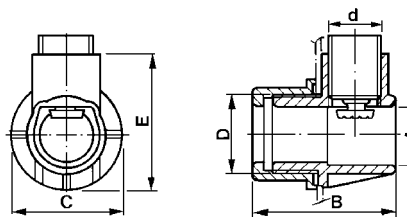
Articolo 5024/2/15: per cavi H03VV-F/H05VV-F Ø min 4,8 - Ø max 14 e H03VVH2/H05VVH2-F sez. min 3,2x5,2 - sez. max 5,2x7,6

M 13x1: Max tightening torque = 150 N cm - M 18x1,5: Max tightening torque = 450 N cm

Cable clamps are supplied with separate threaded grub. - T = Lead bearable load Kgs.

Article 5346/2/09: for cables H03VV-F/H05VV-F Ø min 4,8 - Ø max 9 and H03VVH2/H05VVH2-F sect. min 3x4,8 - sect. max 5x7,2

Article 5024/2/15: for cables H03VV-F/H05VV-F Ø min 4,8 - Ø max 14 and H03VVH2/H05VVH2-F sect. min 3,2x5,2 - sect. max 5,2x7,6



Materiale / Material

6 Nylon 66 RV

Approvati per l'utilizzo in Classe II

Approved for Classe II fittings

Codice / Code	Dimensioni / Dimensions (mm)							Colore / Colour		Omologato Certified
	A	B	C	D	d	E	T	2 Nero Black	6	
5030	20	54	42	M 30x2	M 20x1,5	58	120	Materiale Material → 6	6	C.S. N°EH 229 ☉

M 30x2: Coppia serraggio max = 500 N cm

I bloccacavi vengono forniti con grano filettato separato. - T = Kg carico strappo conduttore.

Per cavi: H03VV-F/H05VV-F Ø min 4,8 - Ø max 18 e H03VVH2/H05VVH2-F sez. min 3,2x5,2 - sez. max 5,2x7,6

M 30x2: Max tightening torque = 500 N cm

Cable clamps are supplied with separate threaded grub. - T = Lead bearable load Kgs.

For cables: H03VV-F/H05VV-F Ø min 4,8 - Ø max 18 and H03VVH2/H05VVH2-F sect. min 3,2x5,2 - sect. max 5,2x7,6

Esempi di utilizzazione

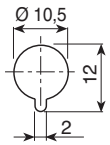
Application examples

Dima di foratura

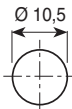
Template



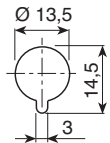
5465/8



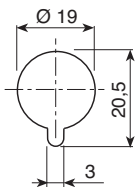
5020



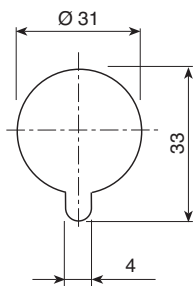
5020/7



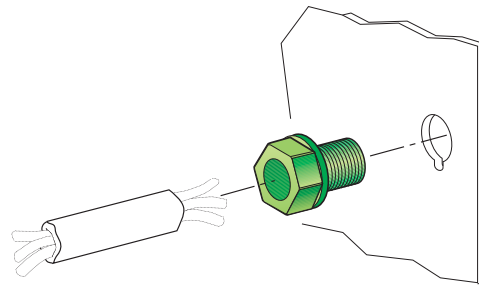
5126



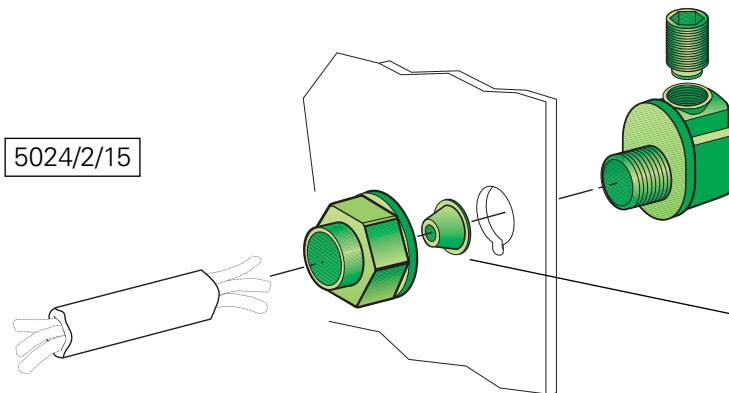
5024/2/15



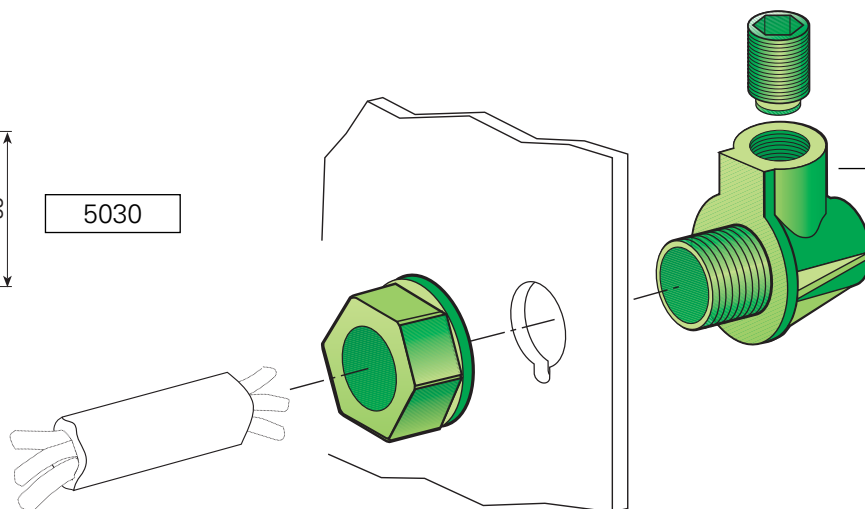
5030



- 5465/8
- 5020
- 5020/7
- 5126



- 5024/2/15
- 5346/2/09
- 5024/2/8



- 5030