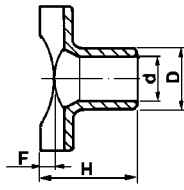
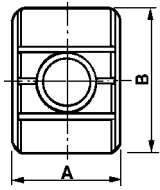


Componenti snodo per parabole

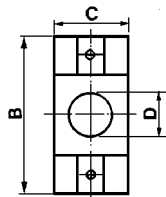
Joint components for parabolic reflectors



Materiale / Material

6 Nylon 66 RV

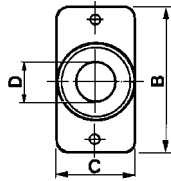
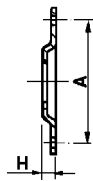
Codice / Code	Dimensioni / Dimensions (mm)						Colore / Colour	
	A	B	D	d	F	H	1 Bianco White	2 Nero Black
5446/1	19,5	24	10,5	7	-	17,5	Materiale / Material → 6	6
5446/1/180	19,8	24	10,3	7,2	4	19	6	6



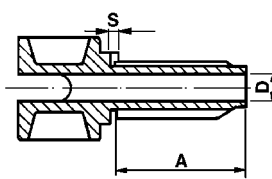
Materiale / Material

6 Nylon 66 RV

Codice / Code	Dimensioni / Dimensions (mm)					Colore / Colour	
	A	B	C	D	H	2 Nero Black	
5447/1	30	40	18	10,8	2,5	Materiale / Material → 6	6



Codice / Code	Dimensioni / Dimensions (mm)					Colore / Colour	
	A	B	C	D	H		
005447/2///8	30	36	19	11	3	Materiale / Material → Acc. zincato/Plated steel	



Materiale / Material

6 Nylon 66 RV

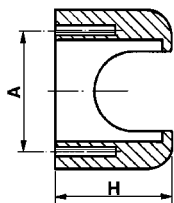
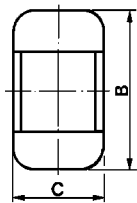
Codice / Code	Dimensioni / Dimensions (mm)					Colore / Colour		Note / Notes
	A	B	D	h	S	1 Bianco White	2 Nero Black	
5447/13	28	11	7	-	-	Materiale / Material → 6	6	
5447/16	37	14,3	7	-	-		6	
5447/18	42	16	7	-	-	6	6	
5447/1/13	28	11	7	1,5	1,5		6	●
5447/1/16	37	14,3	7	1,5	1,5		6	●
5447/1/18	42	16	7	1,5	1,5		6	●

- Predisposti per anti-rotazione.
- Arranged for anti-rotation.



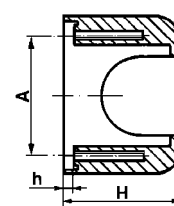
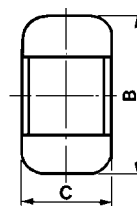
Componenti snodo per parabole

Joint components for parabolic reflectors



Materiale / Material
6 Nylon 66 RV

Codice / Code	Dimensioni / Dimensions (mm)				Colore / Colour	
	A	B	C	H	2 Nero Black	6
5446/90	30	39,5	24,5	29	Materiale / Material → 6	

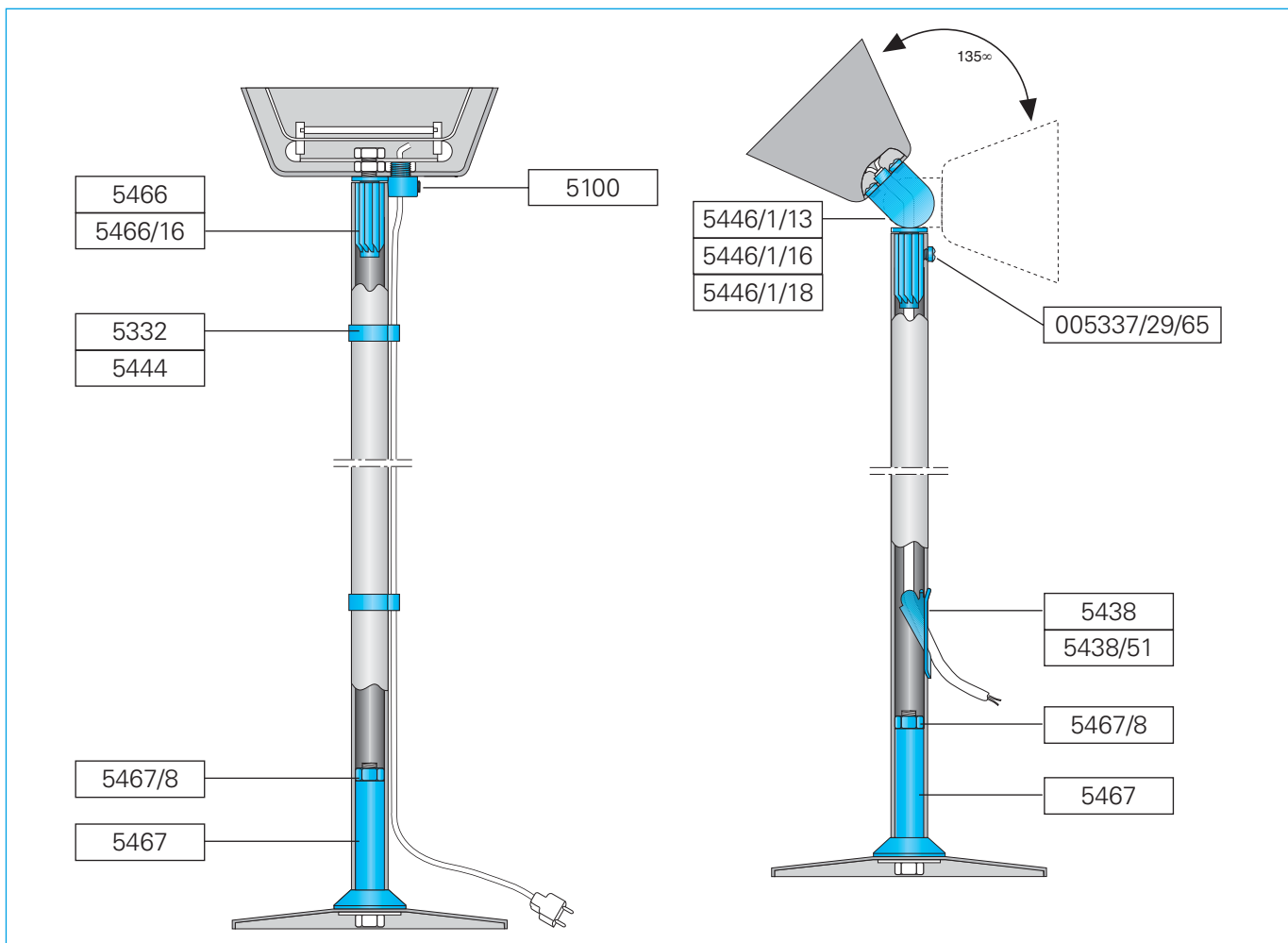


Materiale / Material
6 Nylon 66 RV

Codice / Code	Dimensioni / Dimensions (mm)					Colore / Colour	
	A	B	C	H	h	1 Bianco White	2 Nero Black
5446/2/90	30	39,5	24,5	29	3	Materiale / Material → 6	6

Esempio di utilizzazione

Application example



Assemblaggio snodo per parabole

Joint assembly for parabolic reflectors

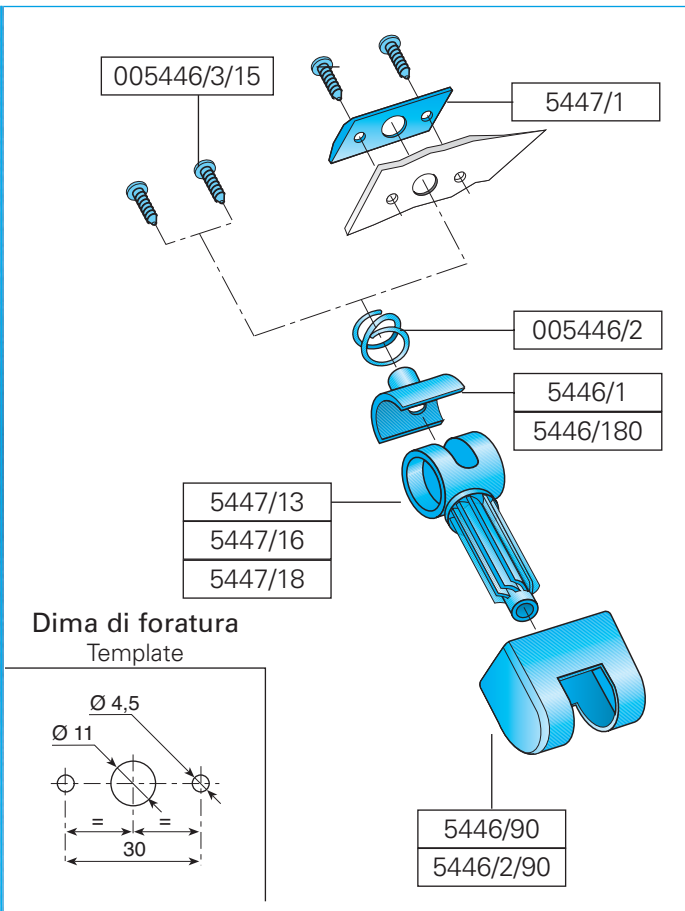
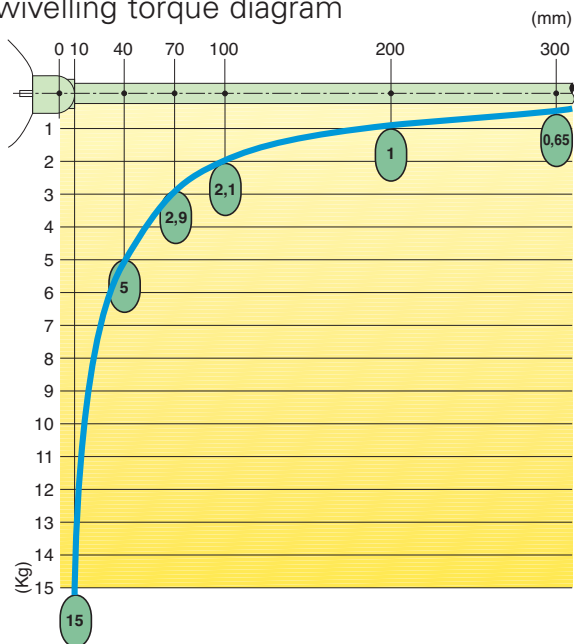
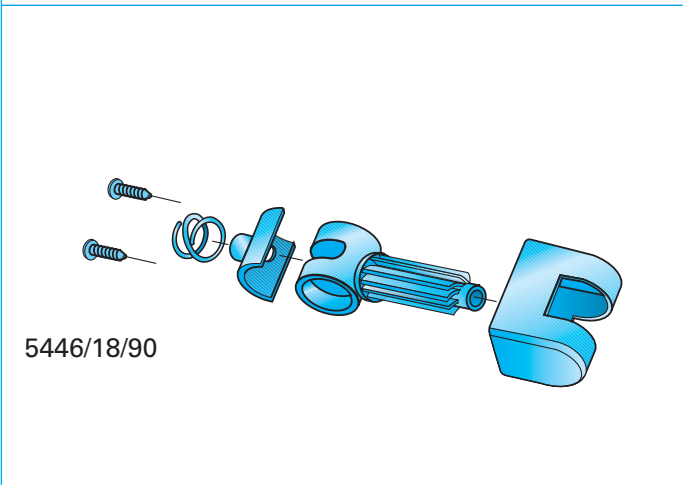
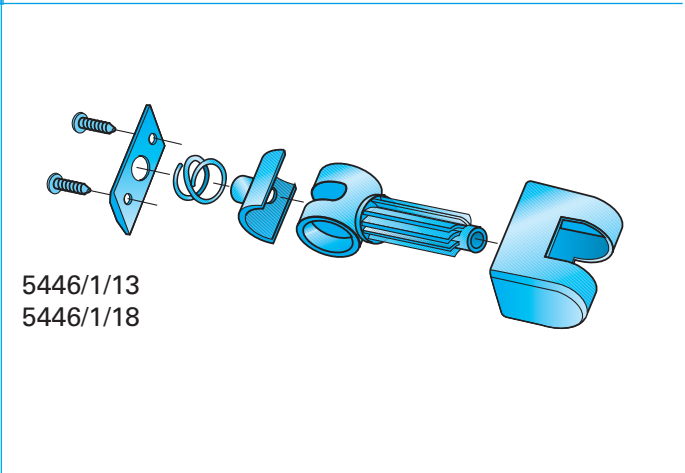


Diagramma carico snodatura
Swivelling torque diagram



Il valore in Kg che viene indicato per ogni snodo a molla è il peso che è possibile applicare al braccio dello snodo ad una distanza in mm dall'asse di snodatura senza che il braccio si pieghi. Naturalmente, maggiore è la distanza in cui il peso viene applicato e proporzionalmente minore è il peso che si può applicare, come mostra il suddetto diagramma.

The Kg value indicated for each spring-joint is the weight that can be hung to the joint arm at a distance of mm from swivelling axis without causing an arm bending. Of course the greater distance from the swivelling axis you have, the smaller weight you can apply as you can see from the above diagram.



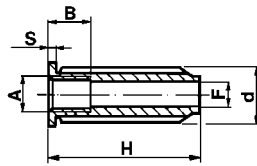


Giunti per tubo

Pipe joints

Giunti filettati

Pipe threaded



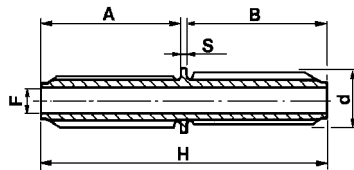
Materiale / Material

6 Nylon 66 RV

Codice / Code	Dimensioni / Dimensions (mm)							Colore / Colour	
	A	B	D	d	F	H	S	1 Nero Black	2 Nero Black
5466/16	M 10x1	10	16	14	7,2	35	1,5	Materiale / Material →	6
5466	M 10x1	10	18	16	7,2	40	1,5		6

Giunti

Pipes



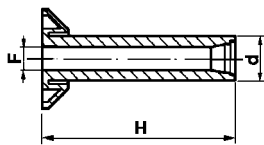
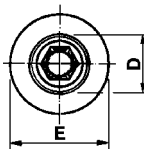
Materiale / Material

6 Nylon 66 RV

Codice / Code	Dimensioni / Dimensions (mm)							Colore / Colour	
	A	B	D	d	F	H	S	1 Bianco White	2 Nero Black
5449/13/13	31,5	29,5	13	11	7	63	2	Materiale / Material →	6
5449/16/16	36	36	16	14,4	7	74	2		6
5449/18/18	44,5	42	18	16	7	88,5	2		6

Blocca tubi piantana

For-lamp pipe lockings



Materiale / Material

6 Nylon 66 RV

Codice / Code	Dimensioni / Dimensions (mm)					Colore / Colour	
	D	d	E	F	H	1 Nero Black	2 Nero Black
5467	18	15,4	34	8,2	63,5	Materiale / Material →	6