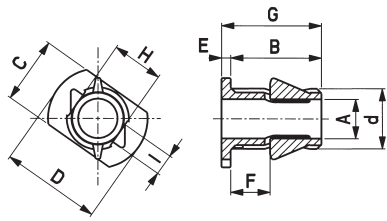


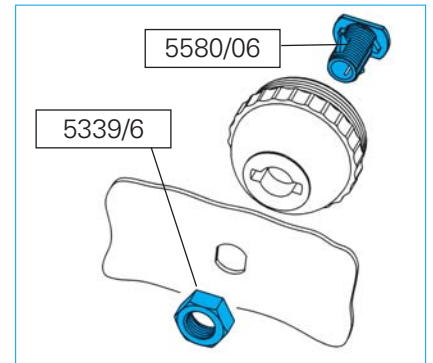
Nipplo anticaduta

Self retaining nipple



Materiale / Material
5 Nylon 66

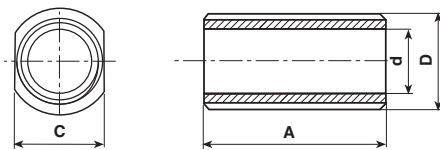
Codice / Code	Dimensioni / Dimensions (mm)									Colore / Colour		
	A	B	C	D	d	E	F	G	H	I	1 Bianco White	2 Nero Black
5580/06	6,5	15	11	16,5	M10x1	1,5	6,5	16,5	8,5	3,5	Materiale Material → 5	5



Nipplo

Nipples

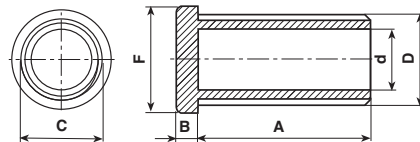
Per tutti i tipi di nipplo la lunghezza del tratto filettato ha toll. ± 1 mm.
 For all nipples thread has ± 1 mm tolerance.



Materiale / Material
6 Nylon 66 Rv

Codice / Code	Dimensioni / Dimensions (mm)				Colore / Colour		
	A	C	D	d	0 Neutro Natural	1 Bianco White	2 Nero Black
5107/2/10	10	8,5	M 10x1	7,1		6	6
5107/2/15	15	8,5	M 10x1	7,1	6	6	6
5107/2/20	20	8,5	M 10x1	7,1		6	6
5107/2/25	25	8,5	M 10x1	7,1		6	6
5107/2/30	30	8,5	M 10x1	7,1		6	6
5107/2/35	35	8,5	M 10x1	7,1		6	6

M 10x1: Coppia serraggio max = 130 N cm - M 10x1: Max tightening torque = 130 N cm



Materiale / Material
6 Nylon 66 RV
11 Policarbonato

Codice / Code	Dimensioni / Dimensions (mm)						Colore / Colour		
	A	B	C	D	d	F	0 Neutro Natural	1 Bianco White	2 Nero Black
5016/3/07	7	2,5	12	M 10x1	7	13,8	Materiale Material → 11	6	6
5016/3/010	10	2,5	12	M 10x1	7	13,8		6	6
5016/3/015	15	2,5	12	M 10x1	7	13,8		6	6
5016/3/020	20	2,5	12	M 10x1	7	13,8		6	6
5016/3/025	25	2,5	12	M 10x1	7	13,8		6	6
5016/3/035	35	2,5	12	M 10x1	7	13,8		6	6

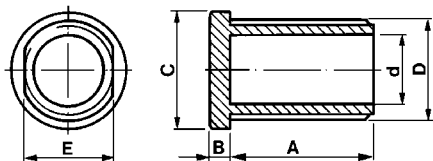
M 10x1: Coppia serraggio max = 130 N cm
 M 10x1: Max tightening torque = 130 N cm



Niplo

Nipples

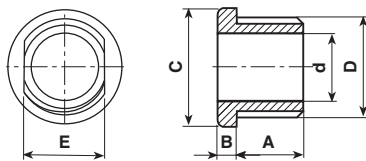
Per tutti i tipi di niplo la lunghezza del tratto filettato ha toll. ± 1 mm.
For all nipples thread has ± 1 mm tolerance.



Materiale / Material
6 Nylon 66 RV

Codice / Code	Dimensioni / Dimensions (mm)						Colore / Colour		
	A	B	C	D	d	E	1 Bianco White	2 Nero Black	
5016/302/7	7	2,5	12	M 10x1	7	8,5	Materiale Material → 6	6	
5016/302/10	10	2,5	12	M 10x1	7	8,5	6	6	
5016/302/15	15	2,5	12	M 10x1	7	8,5	6	6	
5016/302/20	20	2,5	12	M 10x1	7	8,5	6	6	
5016/302/25	25	2,5	12	M 10x1	7	8,5	6	6	
5016/302/30	30	2,5	12	M 10x1	7	8,5	6	6	
5016/302/35	35	2,5	12	M 10x1	7	8,5	6	6	

M 10x1: Coppia serraggio max = 130 N cm
M 10x1: Max tightening torque = 130 N cm



Materiale / Material
6 Nylon 66 RV
11 Policarbonato

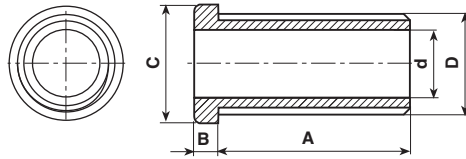
Codice/Code	Dimensioni / Dimensions (mm)						Colore / Colour		
	A	B	C	D	d	E	0 Neutro Natural	1 Bianco White	2 Nero Black
5016/3/2/7	7	2,5	12	M 10x1	7	8,5	Materiale Material → 11		6
5016/3/2/10	10	2,5	12	M 10x1	7	8,5		6	6
5016/3/2/15	15	2,5	12	M 10x1	7	8,5		6	6
5016/3/2/20	20	2,5	12	M 10x1	7	8,5		6	6
5016/3/2/25	25	2,5	12	M 10x1	7	8,5		6	6
5016/3/2/30	30	2,5	12	M 10x1	7	8,5			6
5016/3/2/35	35	2,5	12	M 10x1	7	8,5			6

M 10x1: Coppia serraggio max = 130 N cm
M 10x1: Max tightening torque = 130 N cm

Niplo (8x1 / 10x1)

Nipples (8x1 / 10x1)

Per tutti i tipi di niplo la lunghezza del tratto filettato ha toll. ± 1 mm.
For all nipples thread has ± 1 mm tolerance.



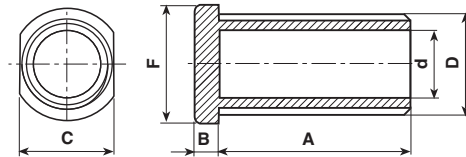
Materiale / Material

6 Nylon 66 RV

11 Policarbonato

Codice / Code	Dimensioni / Dimensions (mm)					Materiale / Material	Colore / Colour			
	A	B	C	D	d		0 Neutro Natural	1 Bianco White	2 Nero Black	4 Oro Gold
5475/3/05	5	2,5	10	M 8x1	5,6		6	6		
5475/3/07	7	2,5	10	M 8x1	5,6	11	6	6		
5016/3/7	7	2,5	12	M 10x1	7	11	6	6		6
5016/3/10	10	2,5	12	M 10x1	7	11	6	6		
5016/3/15	15	2,5	12	M 10x1	7		6	6		
5016/3/20	20	2,5	12	M 10x1	7		6	6		
5016/3/25	25	2,5	12	M 10x1	7		6	6		
5016/3/30	30	2,5	12	M 10x1	7		6	6		
5016/3/35	35	2,5	12	M 10x1	7		6	6		

M 8x1: Coppia serraggio max = 90 N cm - M 10x1: Coppia serraggio max = 130 N cm
M 8x1: Max tightening torque = 90 N cm - M 10x1: Max tightening torque = 130 N cm



Materiale / Material

6 Nylon 66 RV

Codice / Code	Dimensioni / Dimensions (mm)						Materiale / Material	Colore / Colour	
	A	B	C	D	d	F		1 Bianco White	2 Nero Black
5107/0/7	7	3	12	M 10x1	7	13,8		6	
5107/0/10	10	3	12	M 10x1	7	13,8	6	6	
5107/0/15	15	3	12	M 10x1	7	13,8	6	6	
5107/0/20	20	3	12	M 10x1	7	13,8		6	
5107/0/30	30	3	12	M 10x1	7	13,8		6	
5107/0/35	35	3	12	M 10x1	7	13,8	6		

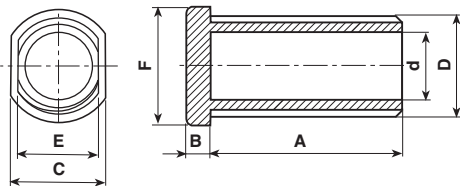
M 10x1: Coppia serraggio max = 130 N cm
M 10x1: Max tightening torque = 130 N cm



Niplo

Nipples

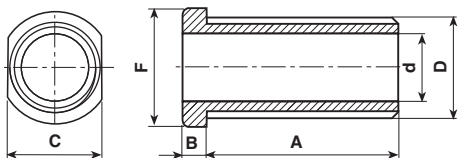
Per tutti i tipi di niplo la lunghezza del tratto filettato ha toll. ± 1 mm.
For all nipples thread has ± 1 mm tolerance.



Materiale / Material
6 Nylon 66 RV

Codice / Code	Dimensioni / Dimensions (mm)							Colore / Colour	
	A	B	C	D	d	E	F	1 Bianco White	2 Nero Black
5107/0/207	7	3	12	M 10x1	7	8,5	13,8	6	6
5107/0/210	10	3	12	M 10x1	7	8,5	13,8	6	6
5107/0/215	15	3	12	M 10x1	7	8,5	13,8		6
5107/0/220	20	3	12	M 10x1	7	8,5	13,8		6
5107/0/230	30	3	12	M 10x1	7	8,5	13,8		6

M 10x1: Coppia serraggio max = 130 N cm
M 10x1: Max tightening torque = 130 N cm



Materiale / Material
6 Nylon 66 RV

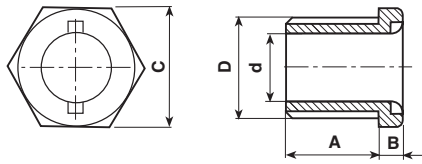
Codice / Code	Dimensioni / Dimensions (mm)							Colore / Colour	
	A	B	C	D	d	F	1 Bianco White	2 Nero Black	
5107/7	7	3	12	M 10x1	7	13,8	6	6	
5107/10	10	3	12	M 10x1	7	13,8	6	6	
5107/15	15	3	12	M 10x1	7	13,8	6	6	
5107/20	20	3	12	M 10x1	7	13,8	6	6	
5107/25	25	3	12	M 10x1	7	13,8		6	
5107/30	30	3	12	M 10x1	7	13,8	6	6	
5107/35	35	3	12	M 10x1	7	13,8		6	

M 10x1: Coppia serraggio max = 130 N cm
M 10x1: Max tightening torque = 130 N cm

Nipplo a testa esagonale (8x1 / 10x1)

Hexagonal head nipples (8x1 / 10x1)

Per tutti i tipi di nipplo la lunghezza del tratto filettato ha toll. ± 1 mm.
For all nipples thread has ± 1 mm tolerance.

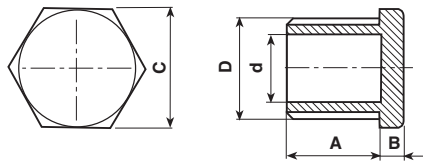


Materiale / Material

6 Nylon 66 RV

Codice / Code	Dimensioni / Dimensions (mm)					Materiale / Material →	Colore / Colour		
	A	B	C	D	d		1 Bianco White	2 Nero Black	4 Oro Gold
5475/05	5,5	3	10	M 8x1	5	6	6		
5475/07	7	2	10	M 8x1	5	6	6		
5016/7	7	3	12	M 10x1	7,0	6	6	6	
5016/10	10	3	12	M 10x1	7,0	6	6		
5016/15	15	3	12	M 10x1	7,0	6	6		
5016/20	20	3	12	M 10x1	7,0		6		
5016/25	25	3	12	M 10x1	7,0	6	6		
5016/30	30	3	12	M 10x1	7,0	6	6		
5016/35	35	3	12	M 10x1	7,0		6		

M 8x1: Coppia serraggio max = 90 N cm - M 10x1: Coppia serraggio max = 130 N cm
M 8x1: Max tightening torque = 90 N cm - M 10x1: Max tightening torque = 130 N cm



Materiale / Material

6 Nylon 66 RV

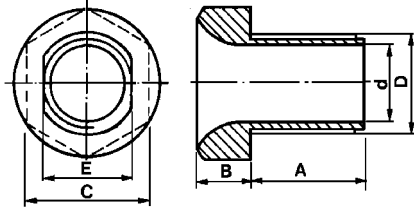
Codice / Code	Dimensioni / Dimensions (mm)					Materiale / Material →	Colore / Colour	
	A	B	C	D	d		1 Bianco White	2 Nero Black
5016/0/7	7	3	12	M 10x1	7,0	6	6	
5016/0/10	10	3	12	M 10x1	7,0	6	6	
5016/0/15	15	3	12	M 10x1	7,0	6	6	
5016/0/20	20	3	12	M 10x1	7,0	6	6	
5016/0/25	25	3	12	M 10x1	7,0	6	6	
5016/0/30	30	3	12	M 10x1	7,0	6	6	
5016/0/35	35	3	12	M 10x1	7,0	6	6	



Nipplo a testa esagonale

Hexagonal head nipples

Per tutti i tipi di nipplo la lunghezza del tratto filettato ha toll. ± 1 mm.
For all nipples thread has ± 1 mm tolerance.

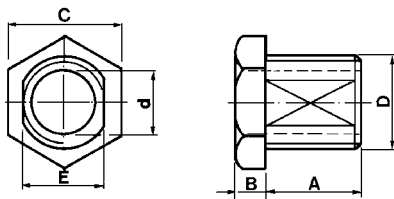


Materiale / Material

6 Nylon 66 RV

18 Polibutil RV-AE

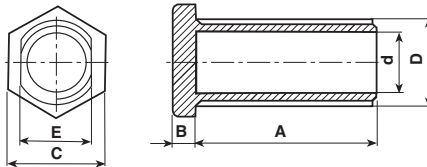
Codice / Code	Dimensioni / Dimensions (mm)						Colore / Colour	
	A	B	C	D	d	E	1 Bianco White	2 Nero Black
5125/3/510	10	3,5	17	M 13x1	10	11,5	Materiale Material →	6 18
5125	10	7	17	M 13x1	10	11,5		6 18
5125/15	15	7	17	M 13x1	10	11,5		6



Materiale / Material

6 Nylon 66 RV

Codice / Code	Dimensioni / Dimensions (mm)						Colore / Colour	
	A	B	C	D	d	E	1 Bianco White	2 Nero Black
5016/2/7	7	3	12	M 10x1	7	8,5	Materiale Material →	6 6
5016/2/10	10	3	12	M 10x1	7	8,5		6
5016/2/15	15	3	12	M 10x1	7	8,5		6 6
5016/2/20	20	3	12	M 10x1	7	8,5		6 6
5016/2/25	25	3	12	M 10x1	7	8,5		6 6
5016/2/30	30	3	12	M 10x1	7	8,5		6
5016/2/35	35	3	12	M 10x1	7	8,5		6



Materiale / Material

6 Nylon 66 RV

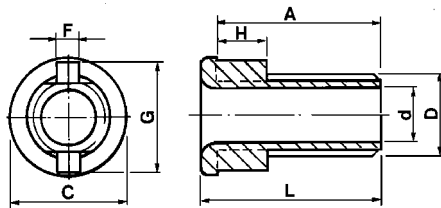
Codice / Code	Dimensioni / Dimensions (mm)						Colore / Colour	
	A	B	C	D	d	E	1 Bianco White	2 Nero Black
5016/0/210	10	3	12	M 10x1	7	8,4	Materiale Material →	6 6

M 10x1: Coppia serraggio max = 130 N cm - M 10x1: Max tightening torque = 130 N cm

Niplo con chiavetta

Detent nipples

Per tutti i tipi di niplo la lunghezza del tratto filettato ha toll. ± 1 mm.
For all nipples thread has ± 1 mm tolerance.



Materiale / Material
6 Nylon 66 RV

☐ Approvati per l'utilizzo in Classe II
Approved for Classe II fittings

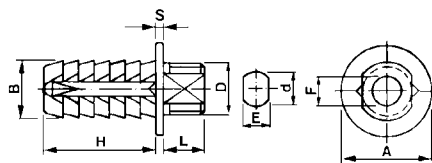
Codice / Code	Dimensioni / Dimensions (mm)								Colore / Colour		Omologato / Certified
	A	C	D	d	F	G	H	L	1 Bianco / White	2 Nero / Black	
5472/10	10	14,5	M 10x1	6,8	3	13,8	6	12	Materiale / Material → 6	6	☐ C.S. N°EH 233 ☑
5472/15	15	14,5	M 10x1	6,8	3	13,8	6	17	6	6	☐ C.S. N°EH 233 ☑
5472/20	20	14,5	M 10x1	6,8	3	13,8	6	22	6	6	☐ C.S. N°EH 233 ☑
5472/25	25	14,5	M 10x1	6,8	3	13,8	6	27	6	6	☐ C.S. N°EH 233 ☑
5472/30	30	14,5	M 10x1	6,8	3	13,8	6	32	6	6	☐ C.S. N°EH 233 ☑
5472/35	35	14,5	M 10x1	6,8	3	13,8	6	37	6	6	☐ C.S. N°EH 233 ☑

M 10x1: Coppia serraggio max = 80 N cm - M 10x1: Max tightening torque = 80 N cm

Niplo a pressione

Pression nipples

Per tutti i tipi di niplo la lunghezza del tratto filettato ha toll. ± 1 mm.
For all nipples thread has ± 1 mm tolerance.



Materiale / Material
6 Nylon 66 RV

Codice / Code	Dimensioni / Dimensions (mm)								Colore / Colour		
	A	B	D	d	E	F	H	L	S	1 Bianco / White	2 Nero / Black
5514/15	18	11	M 10x1	10,3	8,5	6,2	15	6,5	1,5	Materiale / Material → 6	6
5514	18	11	M 10x1	10,3	8,5	6,2	22	6,5	1,5	6	6

M 10x1: Coppia serraggio max = 130 N cm - M 10x1: Max tightening torque = 130 N cm