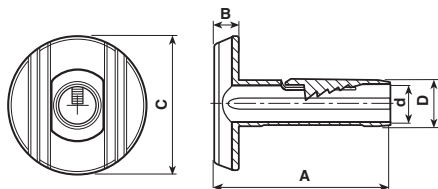




# Protezioni isolanti con bloccacavo per portalampane

Insulating protections with cable clamp for lamp holders



Materiale / Material  Approvati per l'utilizzo in Classe II  
 Approved for Classe II fittings

5 Nylon 66

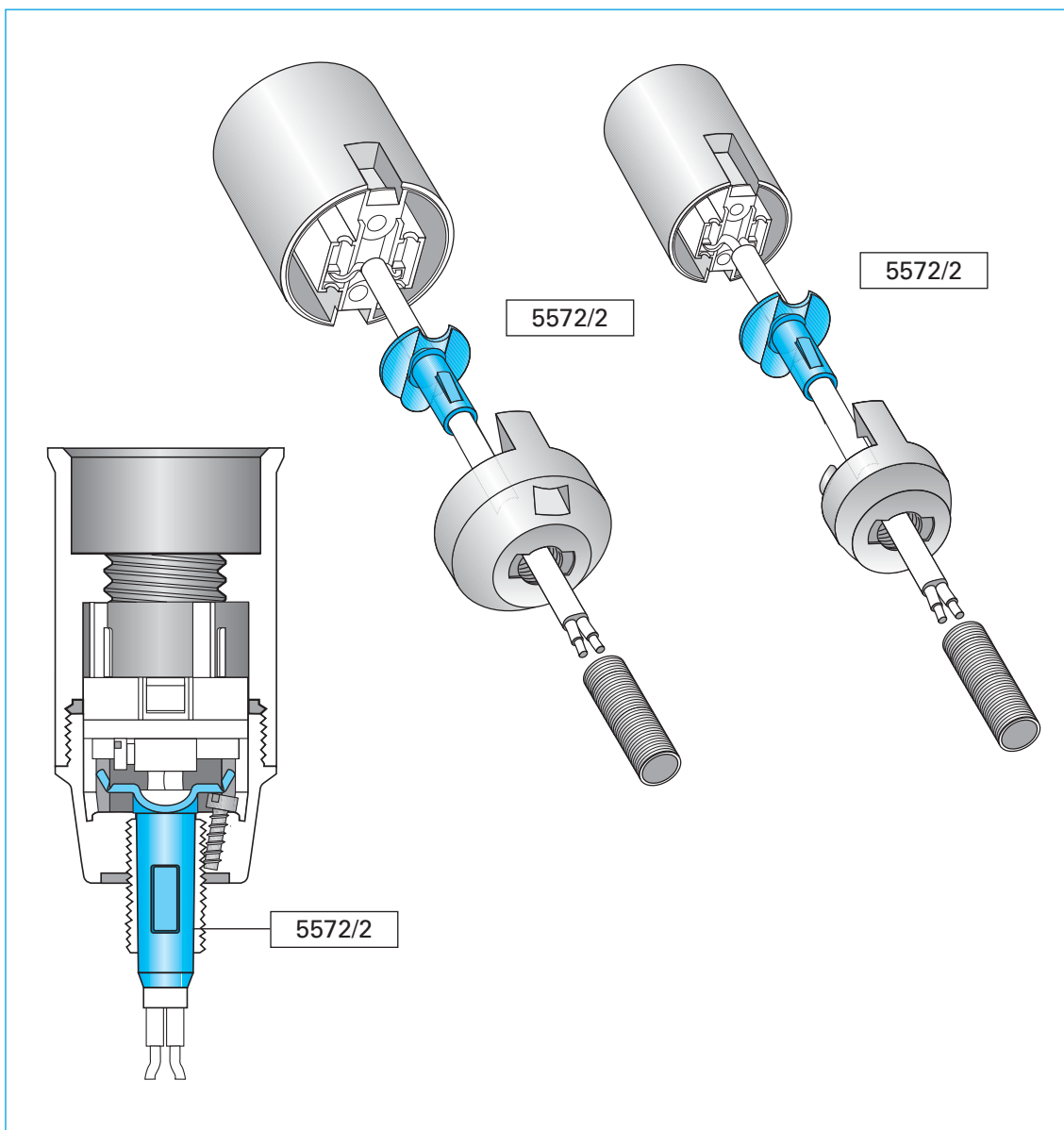
Codice / Code	Dimensioni / Dimensions (mm)					Colore / Colour	Omologato / Certified
	A	B	C	D	d		
5572/2	24,5	3,5	19	6,5	5,3	1 Bianco / White 5 Materiale / Material	<input checked="" type="checkbox"/>

Classe II: per uso con cavo H03VVH2-F 2x0,75 m<sup>2</sup>  
 Uso limitato con portalampane fissato con tige in plastica o tige in metallo non accessibile dall'esterno.  
 Diametro interno della tige: 7,1 mm max

Class II: for cable H03VVH2-F 2x 0,75 m<sup>2</sup>  
 Limited use in lampholders with isolated fixing pipe or non accessible metal fixing pipe.  
 Tube's internal dia: 7,1 mm max

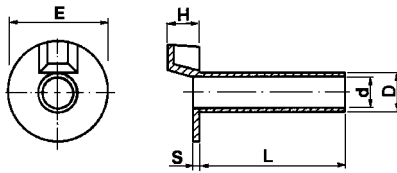
## Esempio di utilizzazione

Application example



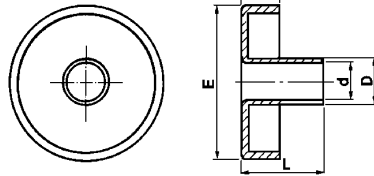
## Protezioni isolanti per portalampane

### Insulating protections for lamp holders



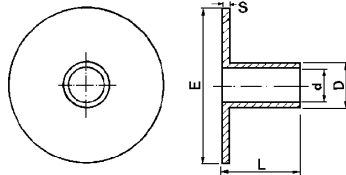
Materiale / Material  Approvati per l'utilizzo in Classe II  
 5 Nylon 66  Approved for Classe II fittings

Codice / Code	Dimensioni / Dimensions (mm)						Colore / Colour			Omologato Certified
	D	d	E	H	L	S	0 Neutro Natural	1 Bianco White	2 Nero Black	
5901/0	6,5	5,5	16,8	5,1	23,5	1,1	Materiale Material → 5	5	5	<input type="checkbox"/> C.S. N°EH 233 ☉
5469	6,5	5,5	15,4	5	18	1,2	5	5	5	<input type="checkbox"/> C.S. N°EH 233 ☉



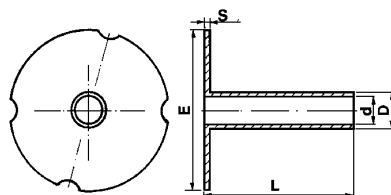
Materiale / Material  Approvati per l'utilizzo in Classe II  
 5 Nylon 66  Approved for Classe II fittings

Codice / Code	Dimensioni / Dimensions (mm)						Colore / Colour		Omologato Certified
	D	d	E	H	L	S	1 Bianco White	2 Nero Black	
5901/1	6,5	5,5	22,2	5	12		Materiale Material → 5	5	<input type="checkbox"/> C.S. N°EH 233 ☉
5900	6,5	5,5	22,2	5	30		5		<input type="checkbox"/> C.S. N°EH 233 ☉



Materiale / Material  Approvati per l'utilizzo in Classe II  
 0 Polietilene  
 5 Nylon 66  Approved for Classe II fittings

Codice / Code	Dimensioni / Dimensions (mm)						Colore / Colour		Omologato Certified
	D	d	E	L	S	S	0 Neutro Natural	2 Nero Black	
5052	7	5,8	25	11	1		Materiale Material → 0 5	5	<input type="checkbox"/> C.S. N°EH 233 ☉
5172	7	6,2	16	12	1		0 5	5	<input type="checkbox"/> C.S. N°EH 233 ☉



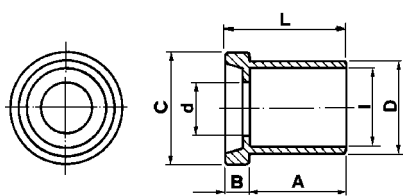
Materiale / Material  
 3 Polipropilene

Codice / Code	Dimensioni / Dimensions (mm)						Colore / Colour
	D	d	E	L	S	S	1 Bianco White
5902	6,5	5,5	29	27	0,7		Materiale Material → 3



## Boccole isolanti

### Insulating bushes



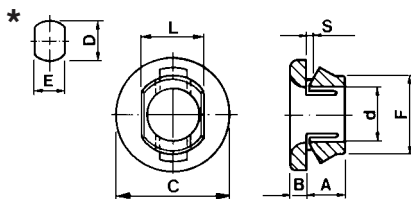
Materiale / Material

- 0 Polietilene
- 5 Nylon 66

Codice / Code	Dimensioni / Dimensions (mm)							Colore / Colour	
	A	B	C	D	d	l	L	0 Neutro Natural	2 Nero Black
5336/5/5	5	3	13,5	11,5	6,3	9,7	8	Materiale Material → 5	5
5336/15	15	3	13,5	11,5	6,3	9,7	18	0	5

## Passacavi a scatto

### Snapping grommets



Materiale / Material

- 5 Nylon 66
- 6 Nylon 66 RV

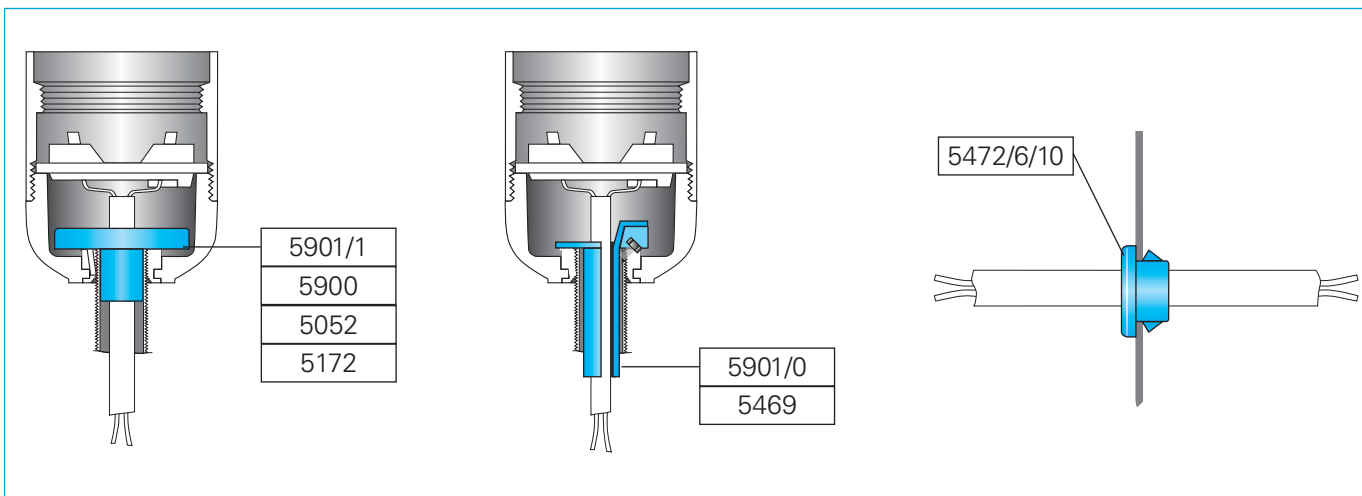
Approvati per l'utilizzo in Classe II  
Approved for Classe II fittings

Codice / Code	Dimensioni / Dimensions (mm)									Colore / Colour			Omologato Certified
	A	B	C	D	d	E	F	L	S	1 Bianco White	2 Nero Black	4 Oro Gold	
5472/6/10	6	2	14,5	10,3	6,7	8,5	10	8,2	0,8-1	Materiale Material → 5 6	6	6	<input type="checkbox"/> C.S. N°EH 233

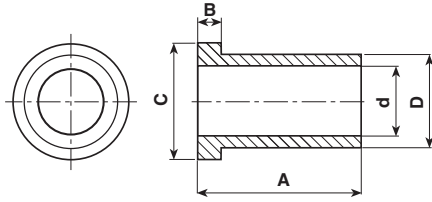
\* Dima di foratura - Template

## Esempi di utilizzazione

### Application examples



# Passacavi Grommets



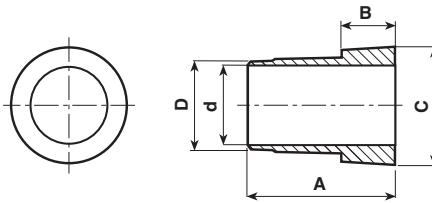
Materiale / Material

- 0** Polietilene
- 5** Nylon 66
- 6** Nylon 66 RV

Approvati per l'utilizzo in **Classe I**  
Approved for **Classe I** fittings

Approvati per l'utilizzo in **Classe II**  
Approved for **Classe II** fittings

Codice / Code	Dimensioni / Dimensions (mm)					Materiale / Material	Colore / Colour				Omologato / Certified
	A	B	C	D	d		0 Neutro Natural	1 Bianco White	2 Nero Black	4 Oro Gold	
5115	7	1	5	4	3	0 5		5			
5008	10	1	7	5	3,7	0 5	0	0	0		<input checked="" type="checkbox"/> C.S. N°EH 234 <sup>Ⓢ</sup>
5524/68/10	10	2	11	6,8	4,1			6	6		
5524/68/16	16	2	11	6,8	4,1			6	6		
5524/68/21	21	2	11	6,8	4,1			6	6		
5524/68/28	28	2	11	6,8	4,1			6	6		
5524/10	10	2	11	7,5	4,1			6	6		
5524/16	16	2	11	7,5	4,1			6	6		
5524/22	22	2	11	7,5	4,1			6	6		
5524/28	28	2	11	7,5	4,1			6	6		
5284	10	1	8	6,2	5	0 5		0			
6107/11	6	1,5	11	7	5			6	6		
5037/V	10	1	11,5	7	5,5	0		0	0		
5037	10	1,7	11	7	5,6	0	0 5	0	0		<input type="checkbox"/> C.S. N°EH 233 <sup>Ⓢ</sup>
5037/0	10	1	11,5	8	5,5	0		0 5			<input type="checkbox"/> C.S. N°EH 233 <sup>Ⓢ</sup>
5037/3	11	3	11	7,2	6	0 5					<input type="checkbox"/> C.S. N°EH 233 <sup>Ⓢ</sup>



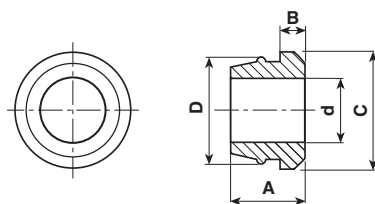
Materiale / Material

- 0** Polietilene
- 5** Nylon 66

Approvati per l'utilizzo in **Classe I**  
Approved for **Classe I** fittings

Approvati per l'utilizzo in **Classe II**  
Approved for **Classe II** fittings

Codice / Code	Dimensioni / Dimensions (mm)					Materiale / Material	Colore / Colour				Omologato / Certified
	A	B	C	D	d		0 Neutro Natural	1 Bianco White	2 Nero Black	4 Oro Gold	
5101	10,5	1,6	9	7	5,9	0 5	0 5	0 5	0		<input checked="" type="checkbox"/> C.S. N°EH 234 <sup>Ⓢ</sup>
5101/5	11,5	4	9	7	5,9	0					<input type="checkbox"/> C.S. N°EH 481 <sup>Ⓢ</sup>
5101/V	11,5	1,6	9	7	5,9	0					
5148	21,5	1,5	13	7	5,8	0 5	0	0 5			
5149	21,5	1,5	14	8,5	6,8	0 5					
5141	14	1,5	11,5	9,5	7,5	0 5		0 5			



Materiale / Material

- 0** Polietilene
- 5** Nylon 66

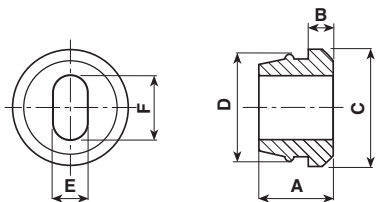
Approvati per l'utilizzo in **Classe I**  
Approved for **Classe I** fittings

Approvati per l'utilizzo in **Classe II**  
Approved for **Classe II** fittings

Codice / Code	Dimensioni / Dimensions (mm)					Materiale / Material	Colore / Colour				Omologato / Certified
	A	B	C	D	d		0 Neutro Natural	1 Bianco White	2 Nero Black	4 Oro Gold	
5105	6	2	9,5	8,5	5,2	0 5	0	0 5	0		<input checked="" type="checkbox"/> C.S. N°EH 233 <sup>Ⓢ</sup>
5038	8	1,8	11	9	6,2	0	0 5	0 5	0		<input type="checkbox"/> C.S. N°EH 233 <sup>Ⓢ</sup>
5104	7	1,8	12,5	11	7	0 5	0	0 5	0		<input type="checkbox"/> C.S. N°EH 233 <sup>Ⓢ</sup>
5104/1	7,4	2,5	13	11	7,2	0	0	0 5	0		<input type="checkbox"/> C.S. N°EH 233 <sup>Ⓢ</sup>



## Passacavi Grommets

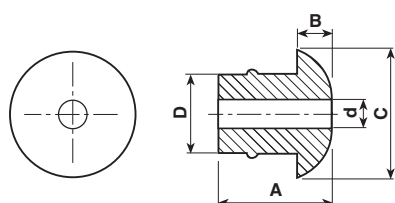


Materiale / Material

0 Polietilene

Approvati per l'utilizzo in Classe II  
Approved for Classe II fittings

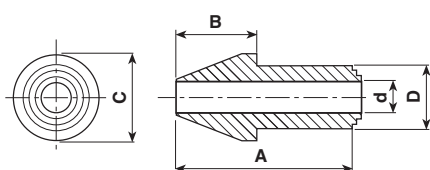
Codice / Code	Dimensioni / Dimensions (mm)						Colore / Colour			Omologato / Certified
	A	B	C	D	E	F	0 Neutro Natural	1 Bianco White	2 Nero Black	
5104/3/6	7	1,8	12,5	11	4,2	7	Materiale Material → 0	0	0	<input checked="" type="checkbox"/> C.S. N°EH 233



Materiale / Material

0 Polietilene

Codice / Code	Dimensioni / Dimensions (mm)					Colore / Colour	
	A	B	C	D	d	0 Neutro Natural	2 Nero Black
5389/1239	7	2	8	5	2,5	Materiale Material → 0	2



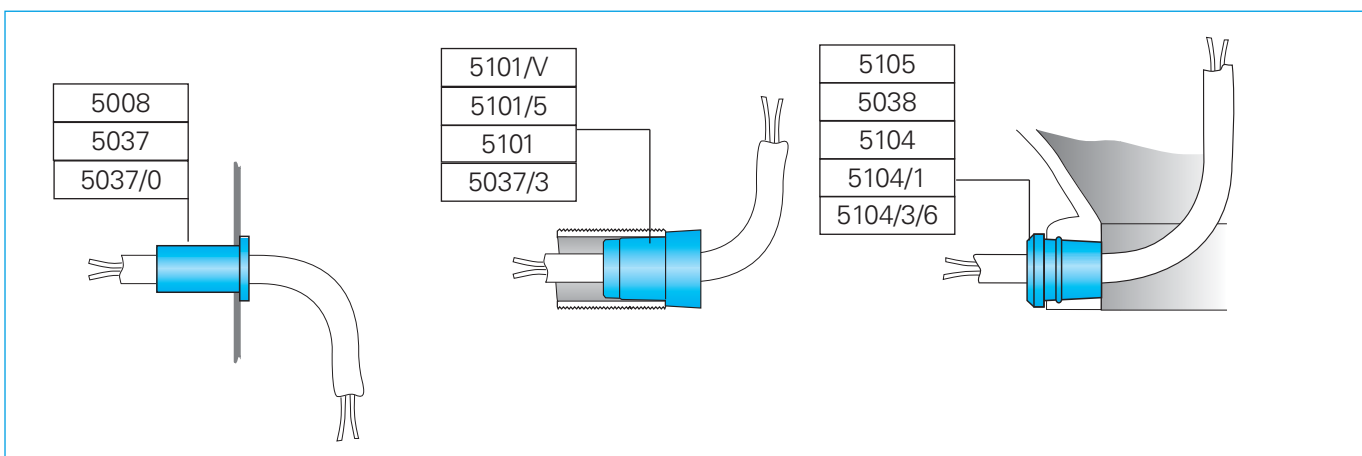
Materiale / Material

6 Nylon 66 RV

Codice / Code	Dimensioni / Dimensions (mm)					Colore / Colour	
	A	B	C	D	d	2 Nero Black	0
5189	11,5	5	5,3	3,8	1,8	Materiale Material → 0	2

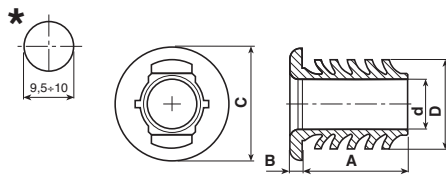
## Esempi di utilizzazione

Application examples



## Passacavi Spessori da 5,8 ÷ 9,5 mm

### Grommets Thickness from 5,8 ÷ 9,5 mm



Materiale / Material

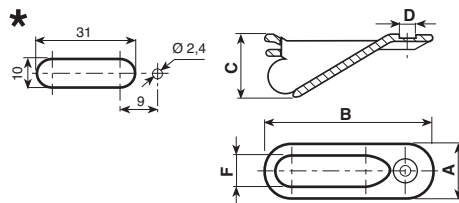
- 0 Polietilene
- 6 Nylon 66 RV

Codice / Code	Dimensioni / Dimensions (mm)					Colore / Colour	
	A	B	C	D	d	0 Neutro Natural	2 Nero Black
5514/7/10	13	1,5	14	11	6,2	Materiale Material → 0	6

\* Dima di foratura - Template

## Passacavi laterali

### Lateral grommets



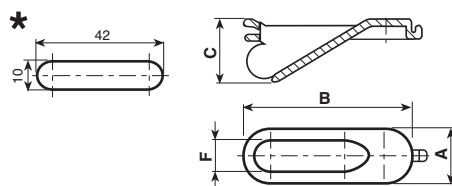
Materiale / Material

- 0 Polietilene
- 5 Nylon 66

Approvati per l'utilizzo in Classe II  
Approved for Classe II fittings

Codice / Code	Dimensioni / Dimensions (mm)					Colore / Colour				Omologato Certified
	A	B	C	D	F	0 Neutro Natural	1 Bianco White	2 Nero Black	4 Oro Gold	
5438	14	44,2	16,5	3	8	Materiale Material → 0 5	0	0 5	0	<input checked="" type="checkbox"/> C.S. N°EH 233

\* Dima per tubo Ø 18÷22 mm - Spessore: 1 mm - Template for a 18÷22 mm tube - Thickness: 1 mm



Materiale / Material

- 0 Polietilene

Approvati per l'utilizzo in Classe II  
Approved for Classe II fittings

Codice / Code	Dimensioni / Dimensions (mm)				Colore / Colour			Omologato Certified
	A	B	C	F	1 Bianco White	2 Nero Black	3 Rosso Red	
5438/51	14	44,2	16,5	8	Materiale Material → 0	0	0	<input checked="" type="checkbox"/> C.S. N°EH 233

\* Dima per tubo Ø 18÷22 mm - Spessore: 1 mm - Template for a 18÷22 mm tube - Thickness: 1 mm

## Esempi di utilizzazione

### Application examples

