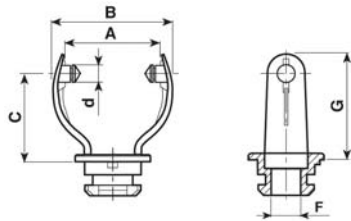


Componenti per faretto

Accessories for spotlight

Forcella snodo

Joint fork



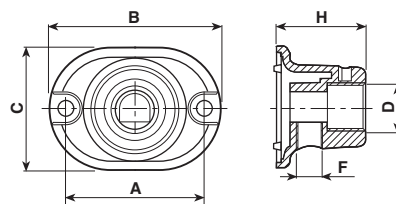
Materiale / Material

6 Nylon 66 RV

Codice / Code	Dimensioni / Dimensions (mm)						Materiale / Material	Colore / Colour
	A	B	C	d	F	G		
5525	21	30	24,4	4,9	8,5	30	2 Nero Black 6	

Adattatore base

Base adapter



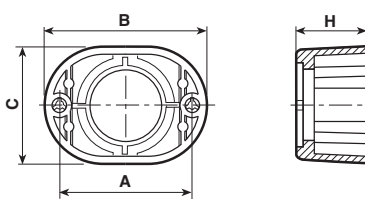
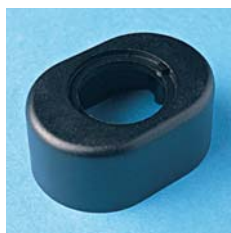
Materiale / Material

6 Nylon 66 RV

Codice / Code	Dimensioni / Dimensions (mm)						Materiale / Material	Colore / Colour
	A	B	C	D	F	G		
5528	30	36	26	M 10x1	M 6x1	19	2 Nero Black 6	

Base forcella

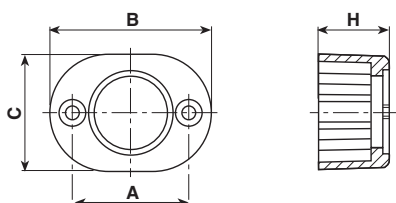
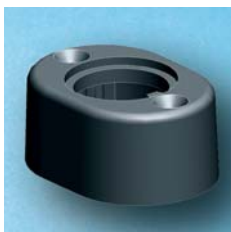
Fork base



Materiale / Material

6 Nylon 66 RV

Codice / Code	Dimensioni / Dimensions (mm)				Materiale / Material	Colore / Colour
	A	B	C	H		
5527	30	36	26	16	2 Nero Black 6	



Materiale / Material

6 Nylon 66 RV

Codice / Code	Dimensioni / Dimensions (mm)				Materiale / Material	Colore / Colour
	A	B	C	H		
5527/1	26	36	26	16	2 Nero Black 6	

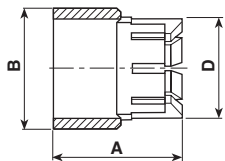
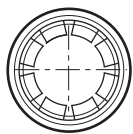


Snodi per faretto

Joints for spotlight

Anello di fermo

Clamping ring



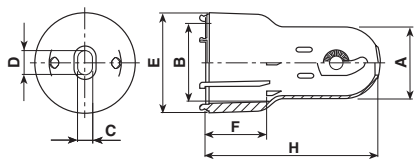
Materiale / Material

9 Acetalica

Codice / Code	Dimensioni / Dimensions (mm)			Colore / Colour
	A	B	D	1 Bianco White
5526	23	21,5	17,7	Materiale / Material → 9

Supporti L.E.D.

Case for L.E.D. modul



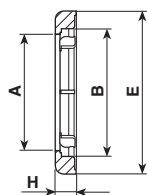
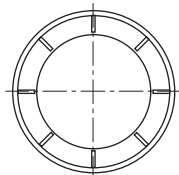
Materiale / Material

6 Nylon 66 RV

Codice / Code	Dimensioni / Dimensions (mm)							Colore / Colour
	A	B	C	D	E	F	H	2 Nero Black
5602/32	28,2	29	5,8	10	39	23,4	67,8	Materiale / Material → 6

Anello di chiusura

Locking ring



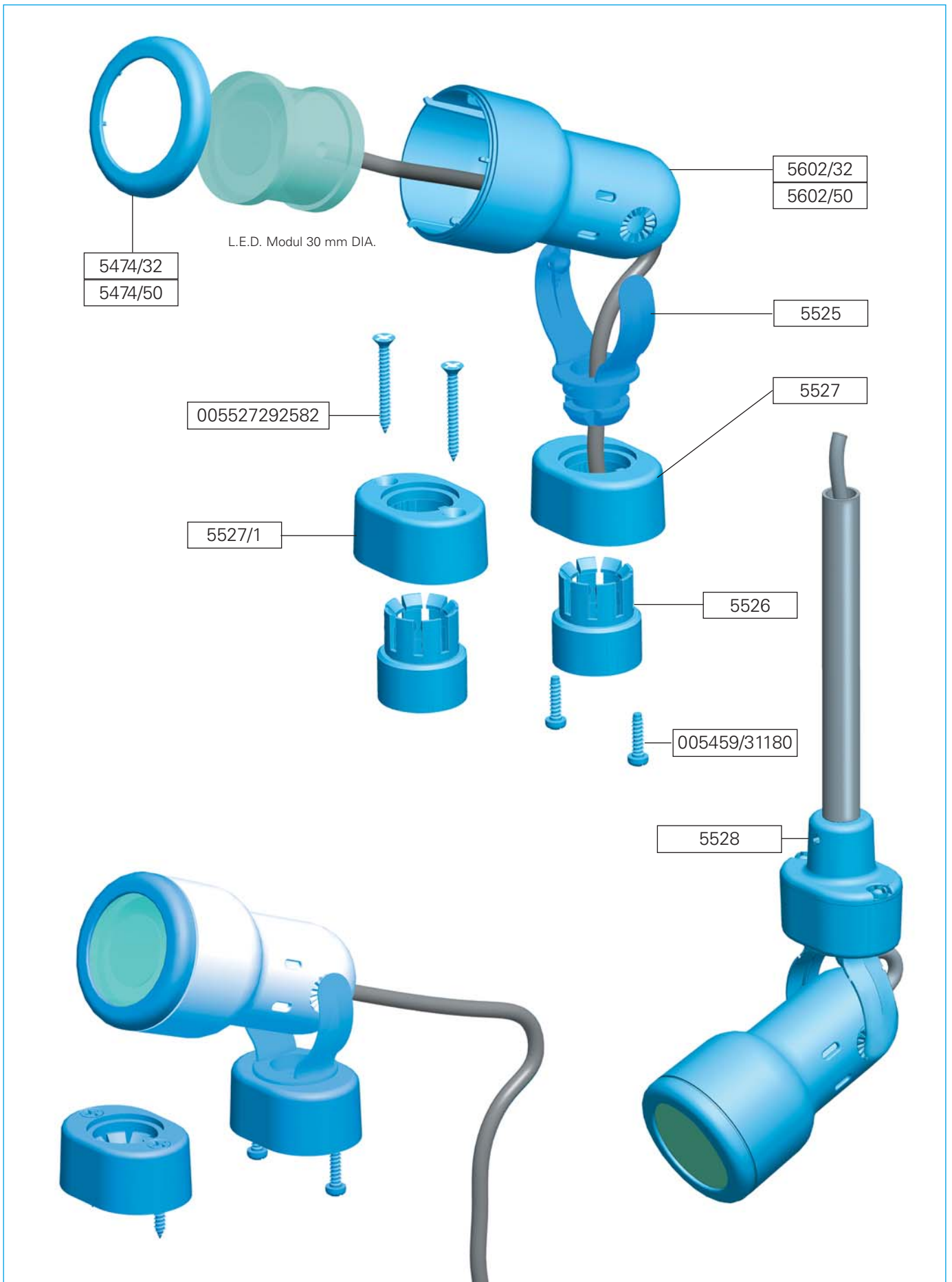
Materiale / Material

6 Nylon 66 RV

Codice / Code	Dimensioni / Dimensions (mm)				Colore / Colour
	A	B	E	H	2 Nero Black
5474/32	27	29	38	1,5	Materiale / Material → 6
5474/50	45,6	50,8	58	11,3	6

Esempio di utilizzazione

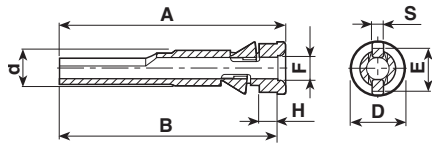
Application example





Bloccacavi

Cable clamps



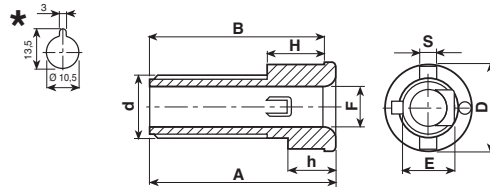
Materiale / Material
6 Nylon 66 RV

□ Approvati per l'utilizzo in Classe II
 Approved for Classe II fittings

Codice / Code	Dimensioni / Dimensions (mm)								Colore / Colour	Omologato / Certified
	A	B	D	d	E	F	H	S		
5472/56	63	61	14,5	M 10x1	13,7	5,6	2	3	2 Nero / Black	Materiale / Material → 6 □ C.S. N°EH 231 ©

Distanziali antirotazione

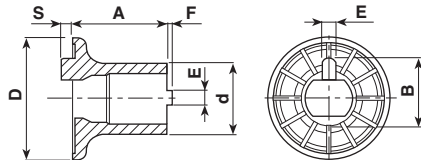
Antirotation spacers



Materiale / Material
6 Nylon 66 RV

Codice / Code	Dimensioni / Dimensions (mm)									Colore / Colour	
	A	B	D	d	E	F	H	h	S		
5472/4/30	32	30	14,5	M 10x1	8,5	6,2	10	6	3	2 Nero / Black	Materiale / Material → 6

* Dima di foratura - Template

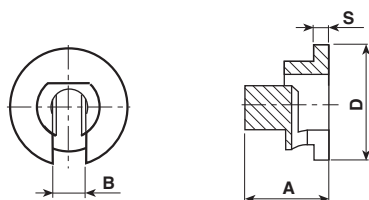


Materiale / Material
6 Nylon 66 RV

Codice / Code	Dimensioni / Dimensions (mm)							Colore / Colour
	A	B	D	d	E	F	S	
5535/20	20	14,5	26	15	2,8	1	2,5	1 Bianco / White 2 Nero / Black
5535/25	25	14,5	26	15	2,8	1	2,5	6
5535/30	30	14,5	26	15	2,8	1	2,5	6

Boccola guidacavo

Cable guide bush

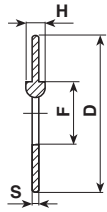
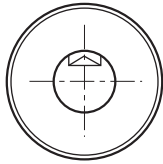
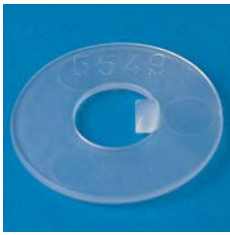


Materiale / Material
6 Nylon 66 RV

Codice / Code	Dimensioni / Dimensions (mm)				Colore / Colour
	A	B	D	S	
5540	14,5	5,6	20	2,5	2 Nero / Black

Rondella

Washer



Materiale / Material

- 0 Polietilene
- 5 Nylon 66

Codice / Code	Dimensioni / Dimensions (mm)				Colore / Colour
	D	F	H	S	
5549	25	10,1	3	1	<input type="checkbox"/> Neutro Natural Materiale / Material → 0 5

Esempi di utilizzazione

Application examples

5472/56

5535/20

5535/25

5535/30

5535/35

5549

5540

5339/6

5038

5104

5472/6/10

Approvati per l'utilizzo in Classe II

Approved for Class II fittings

L'utilizzo congiunto degli articoli:
5472/56 - 5535/---
5549 - 5540 - 5339/6
 è omologato con

C.S. N° EH 229

Per cavi: H03VV-F Ø min 4,8 - Ø max 5,6

Combined use of items:
5472/56 - 5535/---
5549 - 5540 - 5339/6
 is certified with

C.S. N° EH 229

For cables: H03VV-F Ø min 4,8 - Ø max 5,6

5549

5472/4/30

5540

5339/6

5104

5104/1

5105

Foro Base Lampada
Hole on Lamp Base

	Resistenza a trazione: 20 Kg Max Tensile Strength: 20 Kgs
	Resistenza a torsione: 350 N cm Max Torsional Strength: 350 N cm
	Forza di Avvitamento Dado: 50 N cm Max torque Nut: 50 N cm