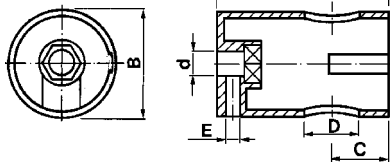
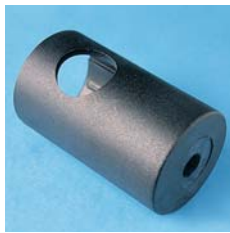




## Componenti snodo

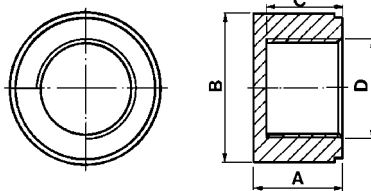
Joint components



Materiale / Material

6 Nylon 66 RV

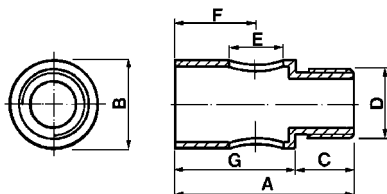
| Codice / Code | Dimensioni / Dimensions (mm) |    |    |     |    |     | Colore / Colour                             |
|---------------|------------------------------|----|----|-----|----|-----|---|
|               | A                            | B  | C  | d   | D  | E   |   |
| 5880/1        | 60                           | 36 | 20 | 8,5 | 19 | 4,6 | 2 Nero<br>Black<br>Materiale / Material → 6 |



Materiale / Material

6 Nylon 66 RV

| Codice / Code | Dimensioni / Dimensions (mm) |    |      |        | Colore / Colour                             |
|---------------|------------------------------|----|------|--------|---|
|               | A                            | B  | C    | D      |   |
| 5880/2        | 22                           | 36 | 19,5 | M 26x2 | 2 Nero<br>Black<br>Materiale / Material → 6 |



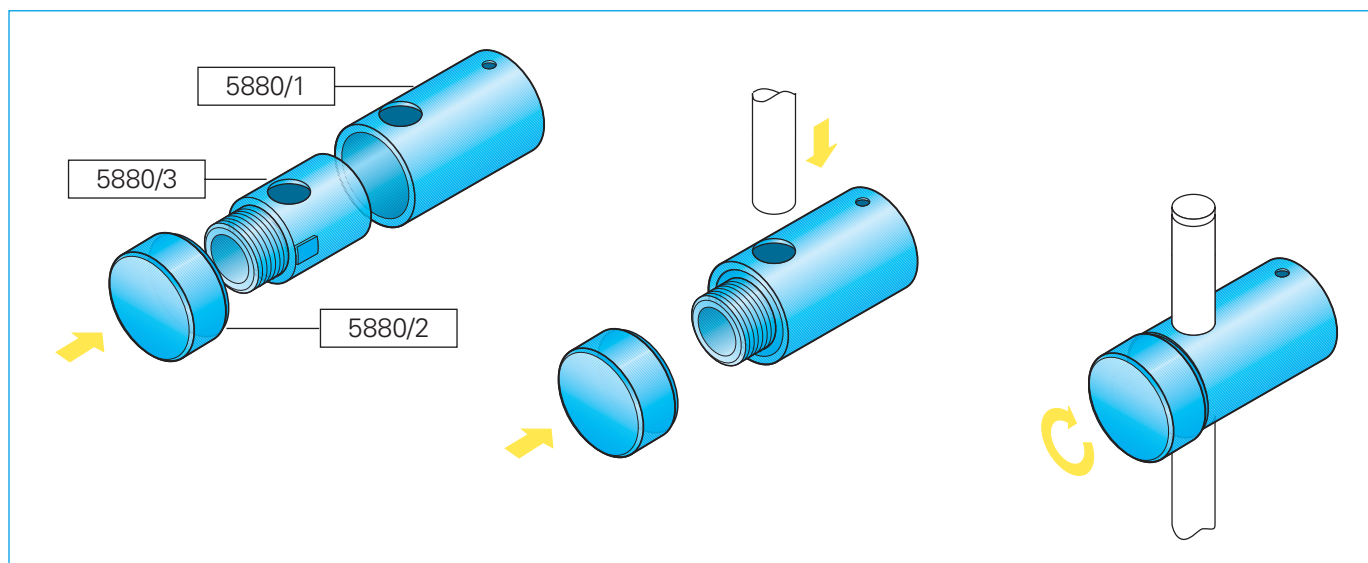
Materiale / Material

6 Nylon 66 RV

| Codice / Code | Dimensioni / Dimensions (mm) |      |    |        |    |    |    | Colore / Colour                             |
|---------------|------------------------------|------|----|--------|----|----|----|---|
|               | A                            | B    | C  | D      | E  | F  | G  |   |
| 5880/3        | 61                           | 30,8 | 19 | M 26x2 | 19 | 28 | 42 | 2 Nero<br>Black<br>Materiale / Material → 6 |

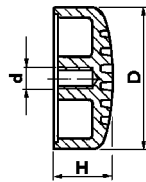
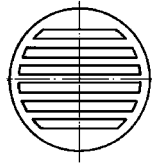
## Assemblaggio snodo per apparecchi illuminazione 5880

Joint assembly for lighting fittings 5880



## Assemblaggio snodo per apparecchi illuminazione

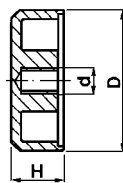
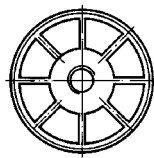
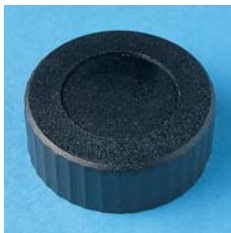
### Joint assembly for lighting fittings



Materiale / Material

6 Nylon 66 RV

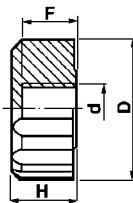
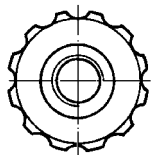
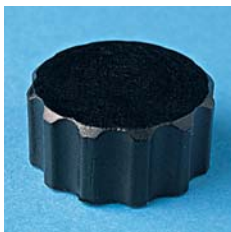
| Codice / Code | Dimensioni / Dimensions (mm) |      |      | Materiale / Material → | Colore / Colour |              |
|---------------|------------------------------|------|------|------------------------|-----------------|--------------|
|               | d                            | D    | H    |                        | 1 Nero Black    | 2 Nero Black |
| 5218/0/5      | M 5x0,8                      | 32,5 | 14,5 | 6                      |                 | 6            |
| 5218/0/6      | M 6x1                        | 32,5 | 14,5 | 6                      |                 | 6            |
| 5218/0/8      | M 8x1,25                     | 32,5 | 14,5 | 6                      |                 | 6            |



Materiale / Material

6 Nylon 66 RV

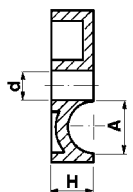
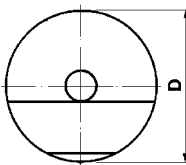
| Codice / Code | Dimensioni / Dimensions (mm) |      |    | Materiale / Material → | Colore / Colour |              |
|---------------|------------------------------|------|----|------------------------|-----------------|--------------|
|               | d                            | D    | H  |                        | 1 Bianco White  | 2 Nero Black |
| 5218/5        | M 5x0,8                      | 32,5 | 12 |                        |                 | 6            |
| 5218/6        | M 6x1                        | 32,5 | 12 |                        |                 | 6            |
| 5218/8        | M 8x1,25                     | 32,5 | 12 | 6                      |                 | 6            |



Materiale / Material

6 Nylon 66 RV

| Codice / Code | Dimensioni / Dimensions (mm) |    |   |      | Materiale / Material → | Colore / Colour |              |
|---------------|------------------------------|----|---|------|------------------------|-----------------|--------------|
|               | d                            | D  | F | H    |                        | 1 Nero Black    | 2 Nero Black |
| 5208/8        | M 8x1,25                     | 22 | 8 | 10,5 | 6                      |                 | 6            |



Materiale / Material

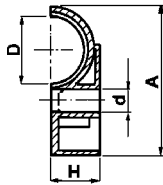
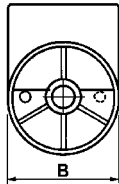
6 Nylon 66 RV

| Codice / Code | Dimensioni / Dimensions (mm) |   |    |   | Materiale / Material → | Colore / Colour |              |
|---------------|------------------------------|---|----|---|------------------------|-----------------|--------------|
|               | A                            | d | D  | H |                        | 1 Nero Black    | 2 Nero Black |
| 5219/5/6      | 6                            | 5 | 29 | 8 | 6                      |                 | 6            |
| 5219/5/8      | 8                            | 5 | 29 | 8 | 6                      |                 | 6            |
| 5219/5/10     | 10                           | 5 | 29 | 8 | 6                      |                 | 6            |
| 5219/6/10     | 10                           | 6 | 29 | 8 | 6                      |                 | 6            |



## Componenti snodo per apparecchi illuminazione

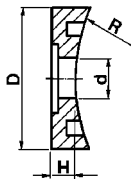
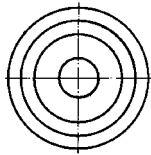
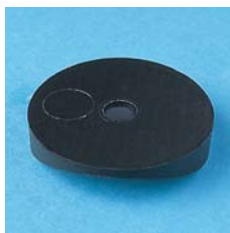
Joint components for lighting fittings



Materiale / Material

6 Nylon 66 RV

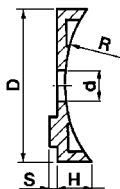
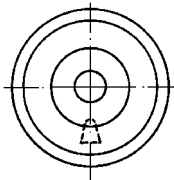
| Codice / Code | Dimensioni / Dimensions (mm) |    |     |    |      | Colore / Colour                          |
|---------------|------------------------------|----|-----|----|------|--|
|               | A                            | B  | d   | D  | H    |  |
| 5420/06       | 26                           | 20 | 8,2 | 6  | 9    | 2 Nero Black<br>Materiale / Material → 6 |
| 5420/08       | 26                           | 20 | 8,2 | 8  | 9    | 6  |
| 5420/10       | 26                           | 20 | 8,2 | 10 | 9    | 6  |
| 5295/13       | 39                           | 29 | 6,3 | 13 | 12,8 | 6  |
| 5295/16       | 39                           | 29 | 6,3 | 16 | 12,8 | 6  |



Materiale / Material

6 Nylon 66 RV

| Codice / Code | Dimensioni / Dimensions (mm) |    |   |    | Colore / Colour                          |
|---------------|------------------------------|----|---|----|--|
|               | d                            | D  | H | R  |  |
| 5220/6        | 6                            | 29 | 6 | 25 | 2 Nero Black<br>Materiale / Material → 6 |



Materiale / Material

6 Nylon 66 RV

| Codice / Code | Dimensioni / Dimensions (mm) |    |   |    |   | Colore / Colour                          |
|---------------|------------------------------|----|---|----|---|--|
|               | d                            | D  | H | R  | S |  |
| 5220/1/6      | 6                            | 29 | 6 | 25 | 1 | 2 Nero Black<br>Materiale / Material → 6 |

## Assemblaggio snodo per apparecchi illuminazione

Joint assembly for lighting fittings

