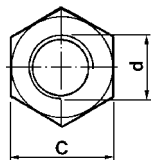
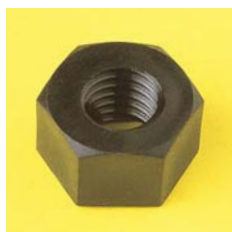




## Dadi Nuts



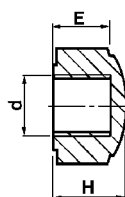
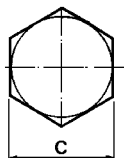
Materiale / Material

**6** Nylon 66 RV

**25** Polifenilensolfuro

Codice / Code	Dimensioni / Dimensions (mm)			Colore / Colour		
	C	d	H	<b>0</b> Neutro Natural	<b>1</b> Bianco White	<b>2</b> Nero Black
5210	5,5	M 3x0,5	3,5	Materiale Material → <b>6</b>	<b>6</b>	
5180	7	M 4x0,7	4,2	<b>6</b>	<b>6</b>	<b>6</b>
5211	8	M 5x0,8	5,2	<b>6</b>	<b>6</b>	<b>6</b>
5179	10	M 6x1	6	<b>6</b>	<b>6</b>	<b>6</b>
5208	13	M 8x1,25	8,3	<b>6</b>	<b>6</b>	<b>6</b>
5235	17	M 10x1,5	10	<b>6</b> <b>25</b>	<b>6</b>	<b>6</b>

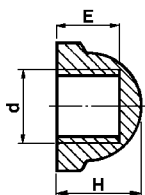
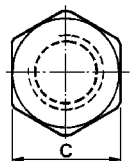
## Dadi ciechi Cap nuts



Materiale / Material

**6** Nylon 66 RV

Codice / Code	Dimensioni / Dimensions (mm)				Colore / Colour		
	C	d	E	H	<b>0</b> Neutro Natural	<b>1</b> Bianco White	<b>2</b> Nero Black
5210/0	5,5	M 3x0,5	3	4	Materiale Material →	<b>6</b>	<b>6</b>
5180/0	7	M 4x0,7	3,8	5,5	<b>6</b>	<b>6</b>	<b>6</b>
5211/0	8	M 5x0,8	4,9	6,5		<b>6</b>	<b>6</b>
5179/0	10	M 6x1	5,5	7,5		<b>6</b>	<b>6</b>
5208/0	13	M 8x1,25	7,7	10		<b>6</b>	<b>6</b>
5235/0	17	M 10x1,5	10	12,5		<b>6</b>	<b>6</b>



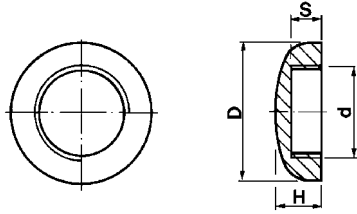
Materiale / Material

**6** Nylon 66 RV

Codice / Code	Dimensioni / Dimensions (mm)				Colore / Colour		
	C	d	E	H	<b>1</b> Bianco White	<b>2</b> Nero Black	<b>8</b> Grigio Grey
5464/0/15	15	M 10x1	9	11,5	Materiale Material → <b>6</b>	<b>6</b>	<b>6</b>

## Dadi ciechi

### Cap nuts

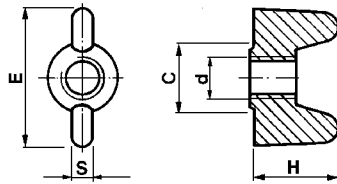


Materiale / Material  
**6** Nylon 66 RV

Codice / Code	Dimensioni / Dimensions (mm)				Colore / Colour		
	D	d	H	S	1 Bianco White	2 Nero Black	4 Oro Gold
5339/0	14	M 10x1	5,6	3	Materiale Material → <b>6</b>	<b>6</b>	<b>6</b>

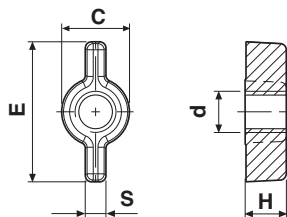
## Galletti

### Wing nuts



Materiale / Material  
**6** Nylon 66 RV

Codice / Code	Dimensioni / Dimensions (mm)					Colore / Colour		
	C	d	E	H	S	0 Neutro Natural	1 Bianco White	2 Nero Black
5210/2	5,5	M 3x0,5	11	6	1,5	Materiale Material → <b>6</b>	<b>6</b>	<b>6</b>
5180/2	7	M 4x0,7	14	8	2	<b>6</b>	<b>6</b>	<b>6</b>
5211/2	8	M 5x0,8	16	10	2,5	<b>6</b>	<b>6</b>	<b>6</b>
5179/2	10	M 6x1	20	12	3	<b>6</b>	<b>6</b>	<b>6</b>
5208/2	13	M 8x1,25	26	16	4	<b>6</b>	<b>6</b>	<b>6</b>
5235/2	17	M 10x1,5	34	20	5			<b>6</b>



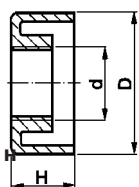
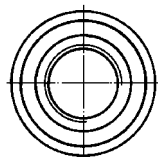
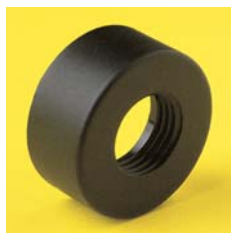
Materiale / Material  
**6** Nylon 66 RV

Codice / Code	Dimensioni / Dimensions (mm)					Colore / Colour	
	C	d	E	H	S	2 Nero Black	
5235/3	16,5	M 10x1,5	34	10	5	Materiale Material → <b>6</b>	



## Ghiere filettate

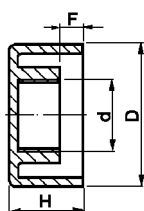
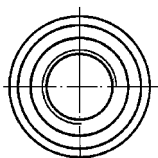
### Threaded rings



Materiale / Material

- 6** Nylon 66 RV
- 18** Polibutil RV-AE

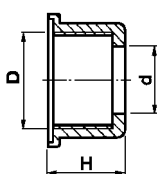
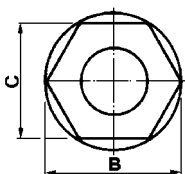
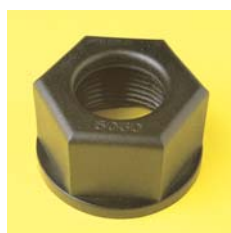
Codice / Code	Dimensioni / Dimensions (mm)			Colore / Colour	
	D	d	H	1 Neutro Natural	2 Nero Black
5171	19	M 10x1	8,5	Materiale / Material → <b>6 18</b>	<b>6 18</b>
5171/10	19	10,5	8	<b>18</b>	<b>18</b>



Materiale / Material

- 6** Nylon 66 RV

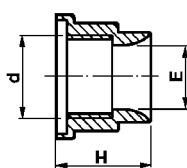
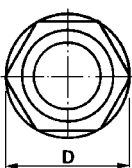
Codice / Code	Dimensioni / Dimensions (mm)				Colore / Colour	
	D	d	F	H	1 Bianco White	2 Nero Black
5171/0	19	M 10x1	3	9,5	Materiale / Material → <b>6</b>	<b>6</b>
5464	20	M 10x1	0	10,5	<b>6</b>	<b>6</b>



Materiale / Material

- 6** Nylon 66 RV

Codice / Code	Dimensioni / Dimensions (mm)					Colore / Colour	
	B	C	D	d	H	1 Bianco White	2 Nero Black
5030/2	42	36	M 30x2	20	24	Materiale / Material → <b>6</b>	<b>6</b>



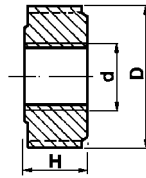
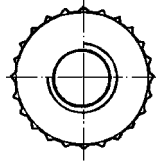
Materiale / Material

- 6** Nylon 66 RV

Codice / Code	Dimensioni / Dimensions (mm)				Colore / Colour	
	D	d	E	H	1 Bianco White	2 Nero Black
5388	21	M 13x1	10,5	16	Materiale / Material → <b>6</b>	<b>6</b>
5023/2/15	27	M 18x1,5	14,5	21,5	<b>6</b>	<b>6</b>

## Ghiere filettate

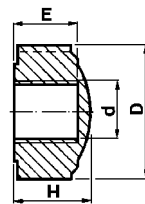
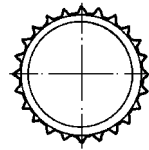
### Threaded rings



Materiale / Material

- 6** Nylon 66 RV
- 11** Policarbonato

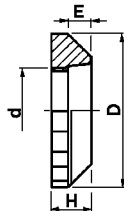
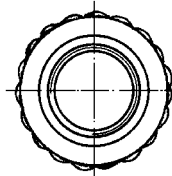
Codice / Code	Dimensioni / Dimensions (mm)			Colore / Colour		
	d	D	H	0 Neutro Natural	1 Bianco White	2 Nero Black
5210/1	M 3x0,5	8	3,5	Materiale Material →	<b>6</b>	<b>6</b>
5180/1	M 4x0,7	10	4,2	<b>11</b>	<b>6</b>	<b>6</b>
5211/1	M 5x0,8	13	5,2		<b>6</b>	<b>6</b>
5179/1	M 6x1	12,5	6		<b>6</b>	<b>6</b>
5208/1	M 8x1,25	17,5	8,3		<b>6</b>	<b>6</b>
5235/1	M 10x1,5	21,5	10		<b>6</b>	<b>6</b>



Materiale / Material

- 6** Nylon 66 RV

Codice / Code	Dimensioni / Dimensions (mm)				Colore / Colour		
	D	d	E	H	0 Neutro Natural	1 Bianco White	2 Nero Black
5210/0/1	8	M 3x0,5	3	4	Materiale Material →	<b>6</b>	<b>6</b>
5180/0/1	10	M 4x0,7	3,8	5,5	<b>6</b>	<b>6</b>	<b>6</b>
5211/0/1	13	M 5x0,8	4,9	6,5		<b>6</b>	<b>6</b>
5179/0/1	12,5	M 6x1	5,5	7,5		<b>6</b>	<b>6</b>
5208/0/1	17,5	M 8x1,25	7,7	10		<b>6</b>	<b>6</b>
5235/0/1	21,5	M 10x1,5	10	12,5		<b>6</b>	<b>6</b>



Materiale / Material

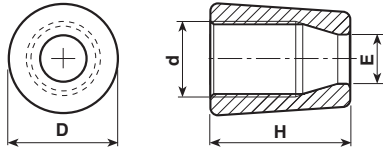
- 6** Nylon 66 RV
- 19** Polifenilensolfuro RVM

Codice / Code	Dimensioni / Dimensions (mm)				Colore / Colour		
	D	d	E	H	0 Neutro Natural	1 Nero Black	2 Nero Black
5404/1	27	M 16x1,5	3	7	Materiale Material →	<b>6</b>	<b>6</b>
5478	29	M 20x2	5,5	7	<b>19</b>		



## Ghiere filettate

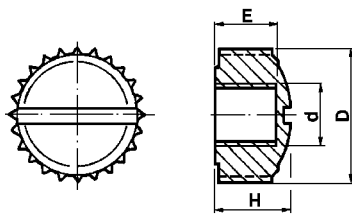
### Threaded rings



Materiale / Material

- 6** Nylon 66 RV
- 11** Policarbonato

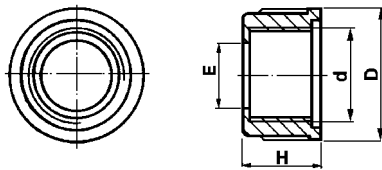
Codice / Code	Dimensioni / Dimensions (mm)				Colore / Colour			
	D	d	E	H	0 Neutro Natural	1 Bianco White	2 Nero Black	4 Oro Gold
5905-5905/A	14,8	M 10x1	7,1	18,5	Materiale Material → <b>11</b>	<b>6</b>	<b>6</b>	<b>6</b>



Materiale / Material

- 6** Nylon 66 RV

Codice / Code	Dimensioni / Dimensions (mm)				Colore / Colour			
	D	d	E	H	0 Neutro Natural	1 Bianco White	2 Nero Black	4 Oro Gold
5235/2/179	21,5	M 6x1	6	12	Materiale Material → <b>6</b>			



Materiale / Material

- 6** Nylon 66 RV

Codice / Code	Dimensioni / Dimensions (mm)				Colore / Colour			
	D	d	E	H	0 Neutro Natural	1 Bianco White	2 Nero Black	4 Oro Gold
5155	13,5	M 10x1	7	8,5	Materiale Material → <b>6</b>	<b>6</b>		