

Linked Crystal Components

Linked Crystal Components are made of loose crystals linked together, be it with thread or metal. They can be divided into three subcategories: Bandings, Crystal Mesh, and Cupchains. They are suitable for use in a wide range of segments such as textiles and accessories.

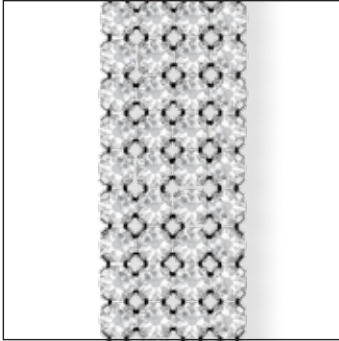
Bandings

Bandings consist of crystals set into cups that are held together by thread. They are available in different thread colors and can be applied by sewing or gluing. They are available in different casing and crystal colors.

Flat Back Bandings

ARTICLE EXPLANATION

55 000



R	001-024
E	2088 SS 20
M	10 M 100%

Flat Back Bandings

55 000	R	E	M	100%
Article number	Number of rows This article is available from 1 to 24 rows.	Elements Crystal and stone size used	Minimum order quantity in meters (M)	% of actual size

ORDERING EXAMPLE & PRODUCT VARIETY EXPLANATION

55 000	004	012	082	001
Article number	3-digit code for number of rows	Color of thread (without net edge) 012 Black (without net edge) 022 White (with net edge) 112 Black (on 1 side) 212 Black (on 2 sides) 122 White (on 1 side) 222 White (on 2 sides)	Color of casing 081 Gold 082 Silver 086 Gun Metal 088 Stainless Steel (for 55 000 and 55 001 only)	Color of crystals Please see the respective product matrix for all available reference codes.

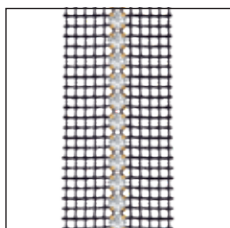
Please note: articles with 1 row are only available with net edge on one or two sides. The articles 55 001 and 55 501, however, can be ordered without net edge.

AVAILABLE OPTIONS WITH NET EDGE

All Flat Back Bandings can be ordered with net edge. This option can be added to one or both sides of the banding. Please see the respective product matrix for all available options.



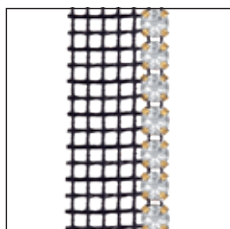
112 Black net edge
on 1 side



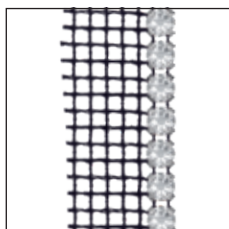
212 Black net edge
on 2 sides

AVAILABLE COMBINATIONS OF THREAD & CASING

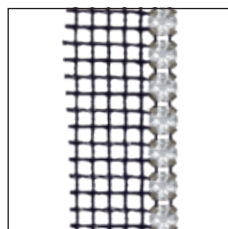
Flat Back Bandings are available in four different casing colors (088 Stainless Steel for 55000/55001 only) and can be combined with two different thread/net edge colors.



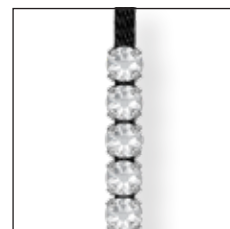
112 081
Black thread,
gold plated casing



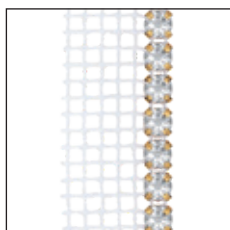
112 082
Black thread,
silver plated casing



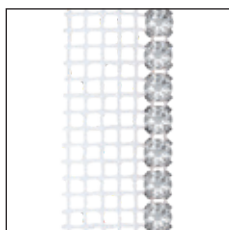
112 086
Black thread,
gun metal plated casing



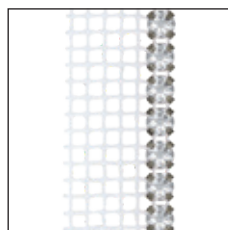
012 082
Black thread,
Stainless Steel



122 081
White thread,
gold plated casing



122 082
White thread,
silver plated casing



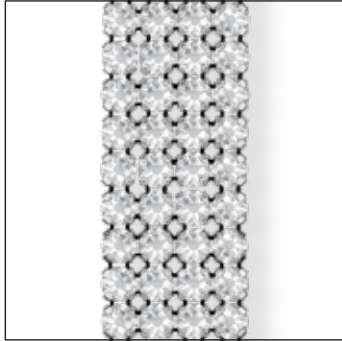
122 086
White thread,
gun metal plated casing



022 088
White thread,
Stainless Steel

Please note: the connective cotton thread differs from the net edge.

55 000



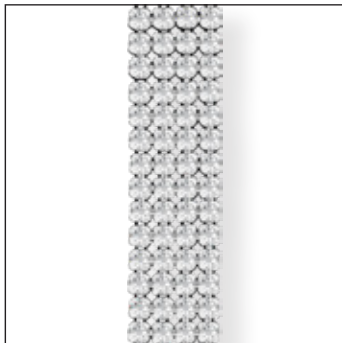
R 001-024
E 2088 SS 20
M 10 M **100%**

55 001¹



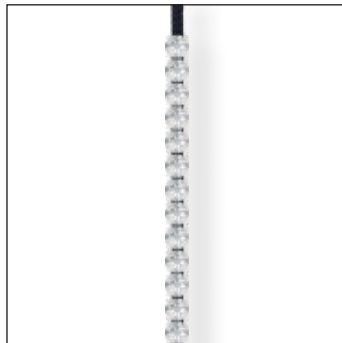
R 001
E 2088 SS 20
M 10 M **100%**

55 500



R 001-024
E 2088 SS 12
M 10 M **100%**

55 501¹



R 001
E 2088 SS 12
M 10 M **100%**

¹ Art. 55 001/55 501 is not available with net edge. When ordering one row with net edge, art. 55 000/55 500 should be used.

55 000
55 001¹
55 500
55 501¹

Size
SS 12
SS 20

- Crystal**
- Crystal F (001)
- Colors**
- Plain Colors**
- Amethyst F (204)
 - Aquamarine F (202)
 - Black Diamond F (215)
 - Blue Zircon F (229)
 - Blush Rose F (257)
 - Capri Blue F (243)
 - Denim Blue F (266)
 - Emerald F (205)
 - Erinite F (360)
 - Fuchsia F (502)
 - Golden Topaz F (1003)*
 - Graphite F (253)
 - Greige F (284)
 - Indian Siam F (327)
 - Iris F (219)
 - Jet (280)
 - Jonquil F (213)
 - Light Amber F (1002)*
 - Light Amethyst F (212)
 - Light Colorado Topaz F (246)
 - Light Peach F (362)
 - Light Rose F (223)
 - Light Sapphire F (211)
 - Light Siam F (227)
 - Light Silk F (261)
 - Light Topaz F (226)
 - Light Turquoise F (263)

55 000
55 001¹
55 500
55 501¹

Size
SS 12
SS 20

- Majestic Blue F (296)
 - Montana F (207)
 - Padparadscha F (542)
 - Peridot F (214)
 - Rose F (209)
 - Ruby F (501)
 - Sapphire F (206)
 - Scarlet F (276)
 - Siam F (208)
 - Silk F (391)
 - Smoked Amber F (1001)*
 - Tanzanite F (539)
 - Topaz F (203)
 - Vintage Rose F (319)
- Opal Colors**
- White Opal F (234)
- Crystal Effects**
- Transparent Effects**
- Crystal Aurore Boreale F (001 AB)
 - Crystal Blue Shade F (001 BLSH)
 - Crystal Golden Shadow F (001 GSHA)
 - Crystal Moonlight F (001 MOL)
 - Crystal Paradise Shine F (001 PARSH)
 - Crystal Shimmer F (001 SHIM)
 - Crystal Silver Night F (001 SINI)
 - Crystal Silver Shade F (001 SSHA)
 - Crystal Volcano F (001 VOL)
- Metallic Effects**
- Crystal Light Chrome F (001 LTCH)
 - Crystal Metallic Sunshine F (001 METSH)
 - Crystal Rose Gold F (001 ROGL)

* All colors with a 4-digit color code (i.e. Golden Topaz) are fully customizable with shorter lead times and lower MOQs compared to our 3-digit colors. Please get in touch with the Customer Service for a time and quantity estimation of your desired variant.

¹ Art. 55 001/55 501 is not available with net edge. When ordering one row with net edge, art. 55 000/55 500 should be used.

Flat Back Bandings

<p>55 000 55 001¹ 55 500 55 501¹</p>	<p>Size</p> <p>SS 12</p> <p>SS 20</p>
--	---------------------------------------

Crystal Lacquer^{PRO} Effects	
Crystal Electric Lacquer^{PRO} Effects *	
Crystal Electric Blue (001 L134S)	
Crystal Electric Green (001 L135S)	
Crystal Electric Orange (001 L136S)	
Crystal Electric Pink (001 L137S)	
Crystal Electric Violet (001 L148S)	
Crystal Electric White (001 L139S)	
Crystal Electric Yellow (001 L138S)	
Crystal Lacquer^{PRO} DeLite Effects	
Crystal Dusty Pink DeLite (001 L149D)	
Crystal Ivory Cream DeLite (001 L106D)	
Crystal Laguna DeLite (001 L142D)	
Crystal Lavender DeLite (001 L144D)	
Crystal Lotus Pink DeLite (001 L145D)	
Crystal Ocean DeLite (001 L143D)	
Crystal Orange Glow DeLite (001 L146D)	
Crystal Royal Blue DeLite (001 L110D)	
Crystal Royal Red DeLite (001 L107D)	
Crystal Serene Gray DeLite (001 L150D)	
Crystal Silky Sage DeLite (001 L147D)	

<p>55 000 55 001¹ 55 500 55 501¹</p>	<p>Size</p> <p>SS 12</p> <p>SS 20</p>
--	---------------------------------------

Color Effects	
Transparent Effects	
Black Diamond Shimmer F (215 SHIM)	
Blue Zircon Shimmer F (229 SHIM)	
Capri Blue Nighfall F (243 NIFA)	
Emerald Nighfall F (205 NIFA)	
Fuchsia Shimmer F (502 SHIM)	
Graphite Nighfall F (253 NIFA)	
Jonquil AB F (213 AB)	
Light Rose AB F (223 AB)	
Light Rose Shimmer F (223 SHIM)	
Light Sapphire Shimmer F (211 SHIM)	
Light Siam AB F (227 AB)	
Light Siam Shimmer F (227 SHIM)	
Peridot Shimmer F (214 SHIM)	
Sapphire AB F (206 AB)	
Siam Nighfall F (208 NIFA)	
Silk Shimmer F (391 SHIM)	
Tanzanite Shimmer F (539 SHIM)	
Topaz Shimmer F (203 SHIM)	
Metallic Effects	
Jet Hematite (280 HEM)	

¹ Art. 55 001/55 501 is not available with net edge. When ordering one row with net edge, art. 55 000/55 500 should be used.

* The Electric Lacquer^{PRO} effects are UV light resistant. Nonetheless, due to the presence of neon pigments in the lacquers, Swarovski recommends using the crystals only under artificial lights, as excessive sun exposure can cause the pigments to fade.

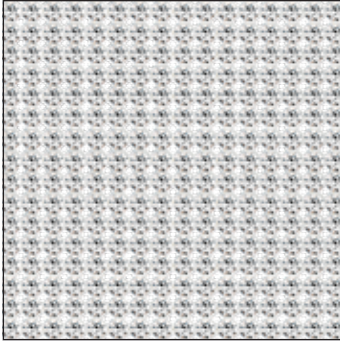
Crystal Mesh

Crystal Mesh is a flexible metal mesh carrier with integrated loose crystals. The product is available in a wide range of colors and casings, either as a Hotfix version, which can be applied using heat, or as a No Hotfix version, which can be hand or machine sewn. Customized solutions are possible and customers are able to choose special motifs incorporating up to nine colors.

Crystal Mesh Standard

ARTICLE EXPLANATION - SHEETS

40 000



SH	100
S	~500x200
E	1088 PP 21
M	1 SH 100%

Crystal Mesh Standard

40 000	SH	S	E	M	100%
Article number	Sheet	Sheet size in mm	Elements Crystal and stone size used	Minimum order quantity in sheets (SH)	% of actual size

ORDERING EXAMPLE & PRODUCT VARIETY EXPLANATION

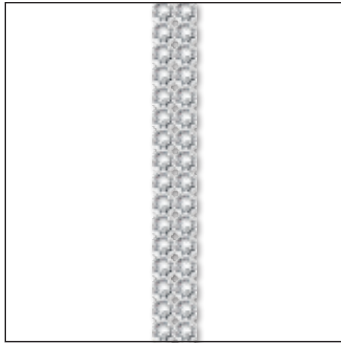
40 000	100	082	001	NOHF
Article number	Sheet	Color of casing	Color of crystals	Hotfix Technology
	100 Standard sheet (-500x200 mm)	012 Black ¹ 081 Gold ² 082 Silver ² 088 Stainless Steel	Please see the respective product matrix for all available reference codes.	HF With Hotfix glue NOHF Without Hotfix glue

¹ Base material for 012 Black-colored casing: aluminum

² Base material for 081 Gold and 082 Silver-colored casing: brass

ARTICLE EXPLANATION - ROWS

40 001

**R** 002-033**E** 1088 PP 21**M** 10 M **100%**

40 001	R	E	M	100%
Article number	Number of rows This article is available from 2 to 33 rows.	Elements Crystal and stone size used	Minimum order quantity in meters (M)	% of actual size

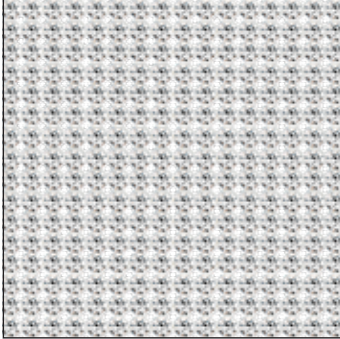
12

ORDERING EXAMPLE & PRODUCT VARIETY EXPLANATION

40 001	002	082	001	HF
Article number	3-digit code for number of rows	Color of casing 012 Black ¹ 081 Gold ² 082 Silver ² 088 Stainless Steel	Color of crystals Please see the respective product matrix for all available reference codes.	Hotfix Technology HF With Hotfix glue NOHF Without Hotfix glue

¹ Base material for 012 Black-colored casing: aluminum² Base material for 081 Gold and 082 Silver-colored casing: brass

40 000



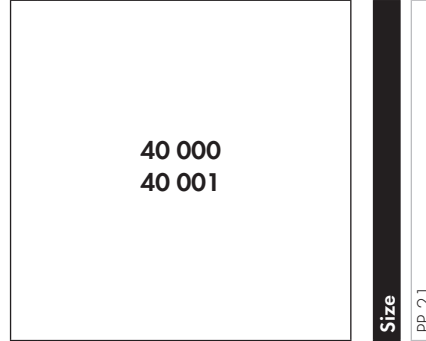
SH 100
S ~500x200
E 1088 PP 21
M 1 SH **100%**

40 001



R 002-033
E 1088 PP 21
M 10 M **100%**

Crystal Mesh Standard



Crystal

Crystal F (001)

Colors

Plain Colors

Amethyst F (204)

Aquamarine F (202)

Black Diamond F (215)

Emerald F (205)

Golden Topaz F (1003)*

Iris F (219)

Jet (280)

Light Amber F (1002)*

Light Amethyst F (212)

Light Colorado Topaz F (246)

Light Rose F (223)

Light Sapphire F (211)

Light Siam F (227)

Light Topaz F (226)

Montana F (207)

Peridot F (214)

Rose F (209)

Sapphire F (206)

Scarlet F (276)

Siam F (208)

Silk F (391)

Smoked Amber F (1001)*

Tanzanite F (539)





Vintage Rose F (319)

Opal Colors

White Opal F (234)

* All colors with a 4-digit color code (i.e. Golden Topaz) are fully customizable with shorter lead times and lower MOQs compared to our 3-digit colors. Please get in touch with the Customer Service for a time and quantity estimation of your desired variant.

40 000 40 001	Size PP 21
------------------	---------------

Crystal Effects	
Transparent Effects	
	Crystal AB F (001 AB)
	Crystal Golden Shadow F (001 GSHA)
	Crystal Silver Night F (001 SINI)
	Crystal Silver Shade F (001 SSHA)

AVAILABLE CASING COLORS

Crystal Mesh Standard is available with black, gold and silver-colored casings, as well as Stainless Steel casing.



012 Black



081 Gold



082 Silver

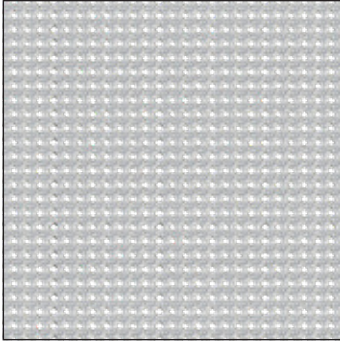


088 Stainless Steel

Crystal Fine Mesh

ARTICLE EXPLANATION - SHEETS

40 600



SH	100
S	~500x200
E	1028 PP 9
M	1 SH 100%

Crystal Fine Mesh

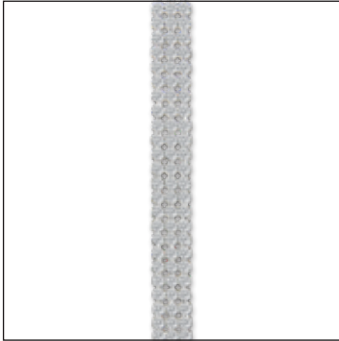
40 600	SH	S	E	M	100%
Article number	Sheet	Sheet size in mm	Elements Crystal and stone size used	Minimum order quantity in sheets (SH)	% of actual size

ORDERING EXAMPLE & PRODUCT VARIETY EXPLANATION

40 600	100	082	001	NOHF
Article number	100 Standard Sheet (500x200 mm)	Color of casing	Color of crystals	Hotfix Technology
		081 Gold ¹ 082 Silver ¹	Please see the respective product matrix for all available reference codes.	HF With Hotfix glue NOHF Without Hotfix glue

ARTICLE EXPLANATION - ROWS

40 601



R	003-033	
E	1028 PP 9	
M	10 M	100%

40 601	R	E	M	100%
Article number	Number of rows	Elements Crystal and stone size used	Minimum order quantity in meters (M)	% of actual size

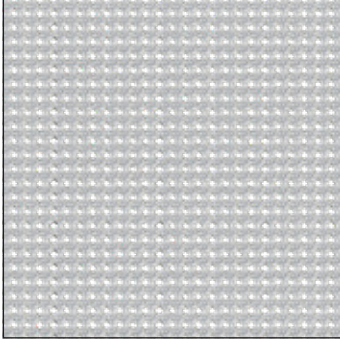
12

ORDERING EXAMPLE & PRODUCT VARIETY EXPLANATION

40 601	003	082	001	HF
Article number	3-digit code for number of rows	Color of casing 081 Gold ¹ 082 Silver ¹	Color of crystals Please see the respective product matrix for all available reference codes.	Hotfix Technology HF With Hotfix glue NOHF Without Hotfix glue

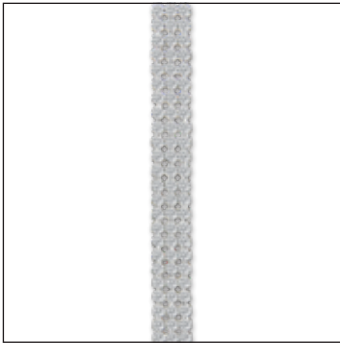
¹ Base material for 081 Gold and 082 Silver-colored casing: brass

40 600



SH	100
S	~500x200
E	1028 PP 9
M	1 SH 100%

40 601



R	003-033
E	1028 PP 9
M	10 M 100%

Crystal Fine Mesh



Crystal

Crystal F (001)

Colors

Plain Colors

Amethyst F (204)

Aquamarine F (202)

Black Diamond F (215)

Emerald F (205)

Golden Topaz F (1003)*

Iris F (219)

Jet (280)

Light Amber F (1002)*

Light Amethyst F (212)

Light Colorado Topaz F (246)

Light Rose F (223)

Light Sapphire F (211)

Light Siam F (227)

Light Topaz F (226)

Montana F (207)

Peridot F (214)

Rose F (209)

Sapphire F (206)

Scarlet F (276)

Siam F (208)

Silk F (391)

Smoked Amber F (1001)*

Tanzanite F (539)

Vintage Rose F (319)

Opal Colors

White Opal F (234)

* All colors with a 4-digit color code (i.e. Golden Topaz) are fully customizable with shorter lead times and lower MOQs compared to our 3-digit colors. Please get in touch with the Customer Service for a time and quantity estimation of your desired variant.

40 600 40 601	Size PP 9
------------------	--------------

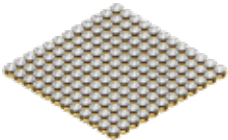
Crystal Effects

Transparent Effects

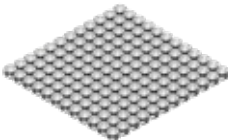
- Crystal AB F (001 AB)
- Crystal Golden Shadow F (001 GSHA)
- Crystal Silver Night F (001 SINI)
- Crystal Silver Shade F (001 SSHA)

AVAILABLE CASING COLORS

Crystal Fine Mesh is available with gold and silver-colored casing.



081 Gold

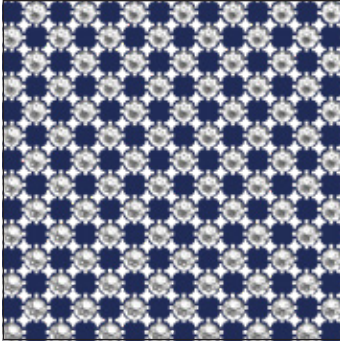


082 Silver

Crystal Mesh Colorée

ARTICLE EXPLANATION - SHEETS

40 200



SH	100
S	~500x200
E	1088 PP 21
M	1 SH 100%

Crystal Mesh Colorée

40 200	SH	S	E	M	100%
Article number	Sheet	Sheet size in mm	Elements Crystal and stone size used	Minimum order quantity in sheets (SH)	% of actual size

ORDERING EXAMPLE & PRODUCT VARIETY EXPLANATION

40 200	100	082	001	NOHF
Article number	Sheet	Color of casing	Color of crystal	Hotfix Technology
	100 Standard sheet (-500x200 mm)	081 Gold ¹ 082 Silver ¹ R9005 Jet Black ² R5022 Night Blue ² R1015 Light Ivory ²	Please see the relevant product matrix for all available reference codes.	HF With Hotfix glue NOHF Without Hotfix glue

¹ Base material for 081 Gold and 082 Silver-colored casing: brass

² Base material for RAL colors: aluminium

ARTICLE EXPLANATION - ROWS

40 201

**R** 003-010**E** 1088 PP 21**M** 10 M **100%**

40 201	R	E	M	100%
Article number	Number of rows	Elements	Minimum order quantity in meters (M)	% of actual size
	This article is available from 3 to 10 rows.	Crystal and stone size used		

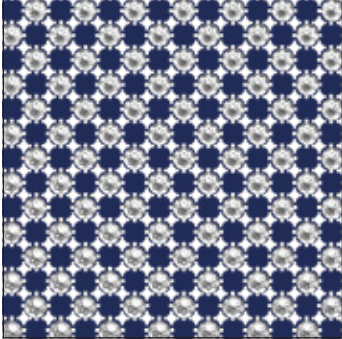
12

ORDERING EXAMPLE & PRODUCT VARIETY EXPLANATION

40 201	003	082	001	NOHF
Article number	3-digit code for number of rows	Color of casing	Color of crystal	Hotfix Technology
		081 Gold ¹ 082 Silver ¹ R9005 Jet Black ² R5022 Night Blue ² R1015 Light Ivory ²	Please see the relevant product matrix for all available reference codes.	HF With Hotfix glue NOHF Without Hotfix glue

¹ Base material for 081 Gold and 082 Silver-colored casing: brass² Base material for RAL colors: aluminium

40 200



SH 100
 S ~500x200
 E 1088 PP 21
 M 1 SH **100%**

40 201



R 003-010
 E 1088 PP 21
 M 10 M **100%**

Crystal Mesh Colorée



Crystal

Crystal F (001)

Colors

Plain Colors

Amethyst F (204)

Aquamarine F (202)

Black Diamond F (215)

Emerald F (205)

Golden Topaz F (1003)*

Iris F (219)

Jet (280)

Light Amber F (1002)*

Light Amethyst F (212)

Light Colorado Topaz F (246)

Light Rose F (223)

Light Sapphire F (211)

Light Siam F (227)

Light Topaz F (226)

Montana F (207)

Peridot F (214)

Rose F (209)

Sapphire F (206)

Scarlet F (276)

Siam F (208)

Silk F (391)

Smoked Amber F (1001)*

Tanzanite F (539)

Vintage Rose F (319)

Opal Colors

White Opal F (234)

* All colors with a 4-digit color code (i.e. Golden Topaz) are fully customizable with shorter lead times and lower MOQs compared to our 3-digit colors. Please get in touch with the Customer Service for a time and quantity estimation of your desired variant.

40 200
40 201

Size
PP 21

Crystal Effects

Transparent Effects

- Crystal AB F (001 AB)
- Crystal Golden Shadow F (001 GSHA)
- Crystal Silver Night F (001 SINI)
- Crystal Silver Shade F (001 SSHA)

AVAILABLE CASING COLORS

Crystal Mesh Colorée is available as standard with gold and silver-colored casings as well as the RAL colors Jet Black (RAL 9005), Night Blue (RAL 5022) and Light Ivory (RAL 1015).

All further RAL Classic and RAL Design Colors are possible as customized solution.



081 Gold



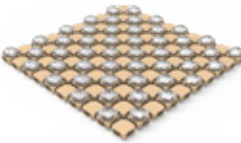
082 Silver



R9005 Jet Black



R5022 Night Blue



R1015 Light Ivory

PRODUCT DETAILS

Article Size	Packing Unit = Minimum Order Quantity	Average Net Weight in Grams per Packing Unit in Alu¹	Average Net Weight in Grams per Packing Unit in Brass²
40 000			
100	1 sheet	270 g	440 g
40 001			
002-033	10 meters	8.3 g per row/meter	13 g per row/meter
40 200			
100	1 sheet	160 g	273 g
40 201			
003-010	10 meters	4.8 g per row/meter	8.3 g per row/meter
40 600			
100	1 sheet		251 g
40 601			
003-033	10 meters		4.5 g per row/meter

Crystal Mesh Colorée

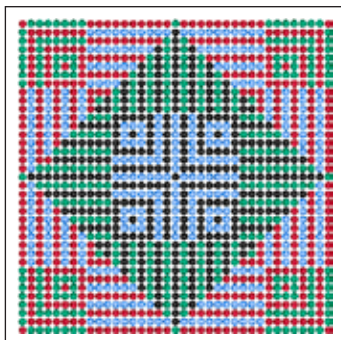
¹ Base material for 012 Black-colored casing and RAL colors: aluminium

² Base material for 081 Gold and 082 Silver-colored casing: brass

Crystal Mesh Motifs

ARTICLE EXPLANATION - SHEETS

41 013



C	012-276/205/206/280
E	PP21/PP21/PP21/PP21
S	~109x109
M	4 PCS 38%

41 013	C	E	S	M	38%
Article number	Color assortment	Elements For details, please refer to the sizes overview at the end of the Collection.	Motif size in mm	Minimum order quantity in pieces (PCS)	% of actual size

12

ORDERING EXAMPLE & PRODUCT VARIETY EXPLANATION

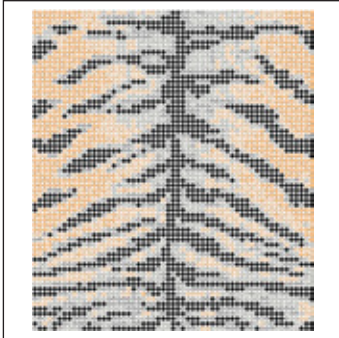
41 013	012	276	205	206
Article number	Color of casing 012 Black ¹ 081 Gold ² 082 Silver ²	Crystal color corresponding to element 1; color of the most frequently used element in the motif. Please see the respective product matrix for all available reference codes.	Crystal color corresponding to element 2; color of the second most frequently used element in the motif.	Crystal color corresponding to element 3; color of the third most frequently used element in the motif.

¹ Base material for 012 Black-colored casing: aluminum

² Base material for 081 Gold and 082 Silver-colored casing: brass

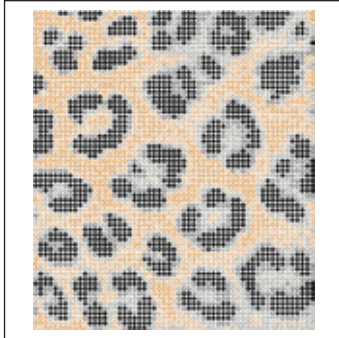
STANDARD COLLECTION

41 005



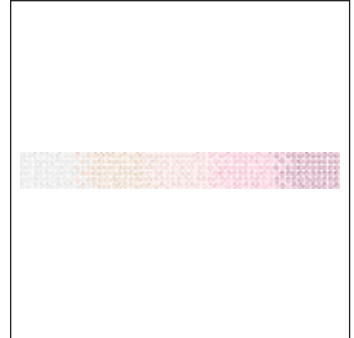
C 081-280/215/001SSHA/246/
001GSHA
E PP21/PP21/PP21/PP21/PP21
S ~168x192
M 2 PCS **22%**

41 006



C 081-280/246/001SSHA/
001GSHA/001SINI
E PP21/PP21/PP21/PP21/PP21
S ~168x192
M 2 PCS **22%**

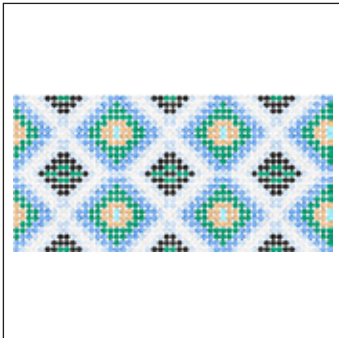
41 007



C 082-391/319/223/001/212
E PP21/PP21/PP21/PP21/PP21
S ~156x17
M 33 PCS **27%**

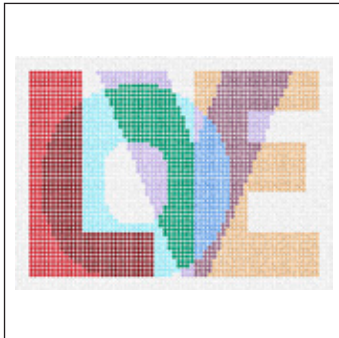
Crystal Mesh Motifs

41 008



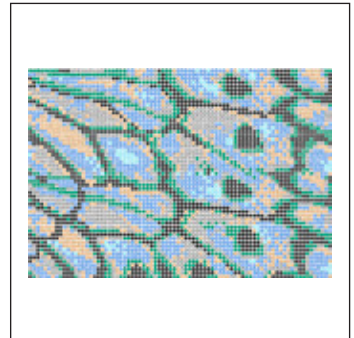
C 088-211/206/001/205/280/
001GSHA/202
E PP21/PP21/PP21/PP21/PP21/
PP21/PP21
S ~150x74
M 6 PCS **28%**

41 009



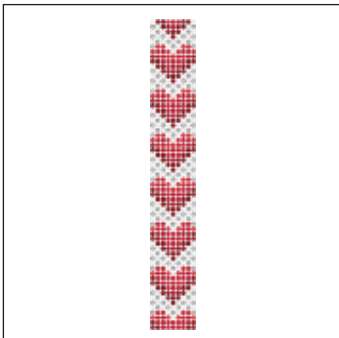
C 088-001/001GSHA/208/205/
227/204/202/539/206
E PP21/PP21/PP21/PP21/PP21/
PP21/PP21/PP21/PP21
S ~209x153
M 2 PCS **20%**

41 010



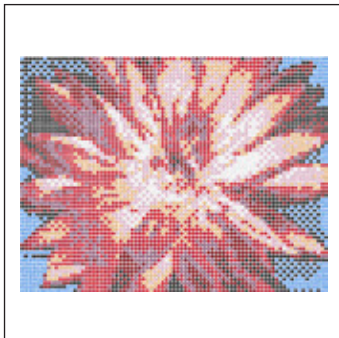
C 012-206/215/280/205/
001GSHA/202
E PP21/PP21/PP21/PP21/PP21/PP21
S ~236x162
M 2 PCS **17%**

41 011



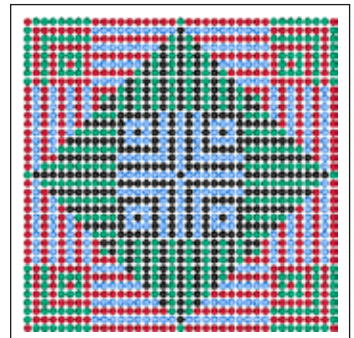
C 088-001/276/208/215/227
E PP21/PP21/PP21/PP21/PP21
S ~26x186
M 18 PCS **22%**

41 012



C 082-001GSHA/276/212/227/
208/204/280/206/001
E PP21/PP21/PP21/PP21/PP21/
PP21/PP21/PP21/PP21
S ~239x183
M 2 PCS **17%**

41 013



C 012-276/205/206/280
E PP21/PP21/PP21/PP21
S ~109x109
M 4 PCS **38%**

SPECIAL MOTIF SERVICE

A special motif is a design created by the customer that differs to the Crystal Mesh Standard Collection. This service opens up an abundance of customization possibilities and enables you to profit from Swarovski's long-standing experience and design expertise. A range of customization options for existing motifs is available (see

“Customization Possibilities” below). You can also submit design sketches that meet your special needs, such as a brand image or an image for a particular sales campaign. This will then be made up according to your specifications using Computer Aided Design, which means that adjustments can be made easily according to your needs.

Customization Possibilities

- Change of size of an existing motif
- Logos or brand names
- Creation of single motifs or rows
- Up to nine colors are possible per Crystal Mesh Motif.

Ordering Process

Send your request with the drawing you wish to order to your nearest Swarovski sales office. Make sure you include all measurements for the desired motif. Please also indicate which product group your special motif applies to (Crystal Mesh). You will then receive a quotation including

your article number, minimum order quantity, price, and the line drawing of your special motif in PDF format. Please contact your Swarovski sales office again if any changes need to be made. Your special motif will be produced and delivered following your confirmation.

Please Note

Please always submit the drawing of your desired motif to represent it in the actual size you require. A small sketch, when enlarged to the desired size, will have blurred lines that will make it difficult to correctly reproduce. Pictures or drawings representing 100% size of the design or very good quality scans in JPG, BMP, or DXF format will ensure that we have clear data to work with. These can also be sent via email or on CD-ROM. If sending a sewing pattern, please include the whole pattern and not just sections. When the sketch is submitted as a hard copy by fax or

email, please include a scale legend (e.g. copy/scan with a ruler next to the drawing). This will ensure that the desired size of the motif can be identified.

Special productions are generally offered to all our customers if these are deemed to be feasible and comply with our General Terms and Conditions. Please note ordering of a design does not grant exclusive production of this design to the customer.

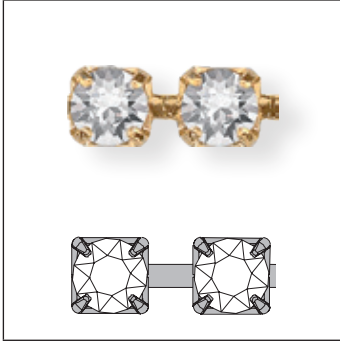
Cupchains

Cupchains are metal chains that incorporate a Round Stone. They are offered in a large variety of colors and sizes. Cupchains can be soldered, plated, and sewn by hand or machine.

Cupchains

ARTICLE EXPLANATION - BASE ITEM NUMBER

27 004 Round Cupchain



2	7	0	04
Product category	Stone code (type of stone used)	Setting code	Number of prongs in the setting (always 2-digit code)
2 Cupchains	7 Round	0 Basic 1 Extended	04

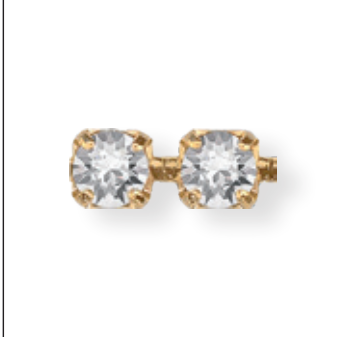
Not all configurations are available for all articles. Please refer to the respective product matrix for available combinations.

ORDERING EXAMPLE & PRODUCT VARIETY EXPLANATION

1	27 004	P24	00	C
Material type	Base item number	Stone size	Ring configuration	Back configuration
1 Brass		3-digit code from respective product matrix	00 None	C Closed

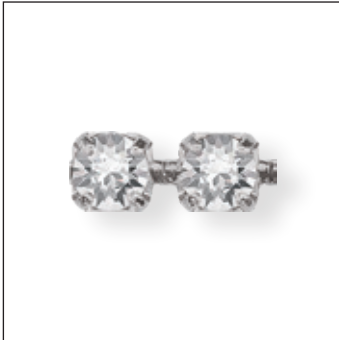
C1	Z	1028	F	001
Stone pattern	Plating	Base item art. no.	Foiling	Color of crystal
A1 Crystal with effect C1 Color K1 Crystal F2 2 alternate colors F3 3 alternate colors F4 4 alternate colors F5 5 alternate colors F6 6 alternate colors	Z No Plating H Rhodium	1028 1088	F Foiled	

27 004 Round (Z)



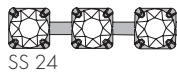
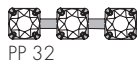
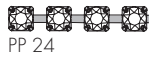
E 1028/1088
M 20 M **250%¹**

27 004 Round (H)



E 1028/1088
M 10 M **250%¹**

Available Stone Sizes:







	Size					
	PP 11	PP 14	PP 18	PP 24	PP 32	SS 24
Crystal						
Crystal F (001)	■	■	■	■	■	■
Colors						
Plain Colors						
Amethyst F (204)	■	■	■	■	■	■
Aquamarine F (202)	■	■	■	■	■	■
Black Diamond F (215)	■	■	■	■	■	■
Emerald F (205)	■	■	■	■	■	■
Golden Topaz F (1003)*	■	■	■	■	■	■
Iris F (219)	■	■	■	■	■	■
Jet (280)	■	■	■	■	■	■
Light Amber F (1002)*	■	■	■	■	■	■
Light Amethyst F (212)	■	■	■	■	■	■
Light Colorado Topaz F (246)	■	■	■	■	■	■
Light Rose F (223)	■	■	■	■	■	■
Light Sapphire F (211)	■	■	■	■	■	■
Light Siam F (227)	■	■	■	■	■	■
Light Topaz F (226)	■	■	■	■	■	■
Montana F (207)	■	■	■	■	■	■
Peridot F (214)	■	■	■	■	■	■
Rose F (209)	■	■	■	■	■	■
Sapphire F (206)	■	■	■	■	■	■
Scarlet F (276)	■	■	■	■	■	■
Siam F (208)	■	■	■	■	■	■
Silk F (391)	■	■	■	■	■	■
Smoked Amber F (1001)*	■	■	■	■	■	■
Tanzanite F (539)	■	■	■	■	■	■
Vintage Rose F (319)	■	■	■	■	■	■
Opal Colors						
White Opal F (234)	■	■	■	■	■	■

The plating resistance of effects should be considered and can be verified using the Color Chart on page 44-47.

¹ The picture shows size PP 32

* All colors with a 4-digit color code (i.e. Golden Topaz) are fully customizable with shorter lead times and lower MOQs compared to our 3-digit colors. Please get in touch with the Customer Service for a time and quantity estimation of your desired variant.

27 004	
Size	
	PP 11
	PP 14
	PP 18
	PP 24
	PP 32
	SS 24
Crystal Effects	
Transparent Effects	
 Crystal Aurore Boreale F (001 AB)	■ ■ ■ ■ ■ ■
 Crystal Golden Shadow F (001 GSHA)	■ ■ ■ ■ ■ ■
 Crystal Silver Night F (001 SINI)	■ ■ ■ ■ ■ ■
 Crystal Silver Shade F (001 SSHA)	■ ■ ■ ■ ■ ■

27 104 Round Extended (Z)



E 1088
M 20 M **250%¹**

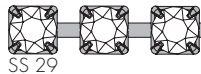
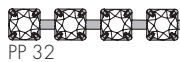
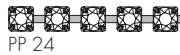
27 104 Round Extended (H)



E 1088
M 10 M **250%¹**

Cupchains

Available Stone Sizes:


















27 104		Size			
		PP 14	PP 24	PP 32	SS 29
Crystal					
<input type="checkbox"/>	Crystal F (001)	■	■	■	■
Colors					
Plain Colors					
<input type="checkbox"/>	Amethyst F (204)	■	■	■	■
<input type="checkbox"/>	Aquamarine F (202)	■	■	■	■
<input type="checkbox"/>	Black Diamond F (215)	■	■	■	■
<input type="checkbox"/>	Emerald F (205)	■	■	■	■
<input type="checkbox"/>	Golden Topaz F (1003)*	■	■	■	■
<input type="checkbox"/>	Iris F (219)	■	■	■	■
<input type="checkbox"/>	Jet (280)	■	■	■	■
<input type="checkbox"/>	Light Amber F (1002)*	■	■	■	■
<input type="checkbox"/>	Light Amethyst F (212)	■	■	■	■
<input type="checkbox"/>	Light Colorado Topaz F (246)	■	■	■	■
<input type="checkbox"/>	Light Rose F (223)	■	■	■	■
<input type="checkbox"/>	Light Sapphire F (211)	■	■	■	■
<input type="checkbox"/>	Light Siam F (227)	■	■	■	■
<input type="checkbox"/>	Light Topaz F (226)	■	■	■	■
<input type="checkbox"/>	Montana F (207)	■	■	■	■
<input type="checkbox"/>	Peridot F (214)	■	■	■	■
<input type="checkbox"/>	Rose F (209)	■	■	■	■
<input type="checkbox"/>	Sapphire F (206)	■	■	■	■
<input type="checkbox"/>	Scarlet F (276)	■	■	■	■
<input type="checkbox"/>	Siam F (208)	■	■	■	■
<input type="checkbox"/>	Silk F (391)	■	■	■	■
<input type="checkbox"/>	Smoked Amber F (1001)*	■	■	■	■
<input type="checkbox"/>	Tanzanite F (539)	■	■	■	■
<input type="checkbox"/>	Vintage Rose F (319)	■	■	■	■
Opal Colors					
<input type="checkbox"/>	White Opal F (234)	■	■	■	■

The plating resistance of effects should be considered and can be verified using the Color Chart on page 46–47.

¹ The picture shows size PP 24

* All colors with a 4-digit color code (i.e. Golden Topaz) are fully customizable with shorter lead times and lower MOQs compared to our 3-digit colors. Please get in touch with the Customer Service for a time and quantity estimation of your desired variant.

27 104					
		Size			
			PP 14	PP 24	PP 32
			SS 29		
Crystal Effects					
Transparent Effects					
	Crystal Aurora Boreale F (001 AB)		■	■	■
	Crystal Golden Shadow F (001 GSHA)		■	■	■
	Crystal Silver Night F (001 SINI)		■	■	■
	Crystal Silver Shade F (001 SSHA)		■	■	■
Crystal Lacquer^{PRO} Effects					
Crystal Lacquer^{PRO} DeLite Effects					
	Crystal Dusty Pink DeLite (001 L149D)				■
	Crystal Ivory Cream DeLite (001 L106D)				■
	Crystal Laguna DeLite (001 L142D)				■
	Crystal Lavender DeLite (001 L144D)				■
	Crystal Lotus Pink DeLite (001 L145D)				■
	Crystal Ocean DeLite (001 L143D)				■
	Crystal Orange Glow DeLite (001 L146D)				■
	Crystal Royal Blue DeLite (001 L110D)				■
	Crystal Royal Red DeLite (001 L107D)				■
	Crystal Serene Gray DeLite (001 L150D)				■
	Crystal Silky Sage DeLite (001 L147D)				■