

# AcTEC LED DRIVER

# UTA-30-24

## SPECIFICATION

Description	220-240V LED Driver, Constant Voltage Driver
Electrical Characteristics	Ta = 25°C, 220-240Vrms input, standard reference load; unless otherwise specified
Class II, IP44, thermally protected 110, independent driver	

<b>Product Name</b>	UTA-30-24
---------------------	-----------

### Input Parameters

Rated Input Voltage	Uin	220-240VAC
Input Current (Full load)	Iin	0.19A
Input Frequency	fin	50/60Hz
Maximum Input Power	Pin	36W
Power Factor (Full load)	λ	≥0.95
THD(Full load)		≤10%
Efficiency (Full load)	η	≥85%
Inrush current		≤15.0A

### Output Parameters

Output Voltage	Vout	24V±5%
Output Current (Full load)	Iout	1.25A
Operating Frequency(Full load)	Fout	40-80KHz
Ripple & Noise		≤500mV
Load Regulation		≤5%
Line Regulation		≤5%

### Ambient

Storage Temperature	ts	-20 ... + 70°C
Operating Ambient	ta	-20 ... + 40°C
Case Temperature at tc Point	tc	85°C
Relative humidity		5 ...85%

### Protection

No Load	Auto-recovery if fault is removed
Over Load	Auto-recovery if fault is removed
Short Circuit	Auto-recovery if fault is removed

### System Parameters

Withstand voltage	3.75KVAC, Ileakage<5mA, 60s
Expected Life	50,000Hours

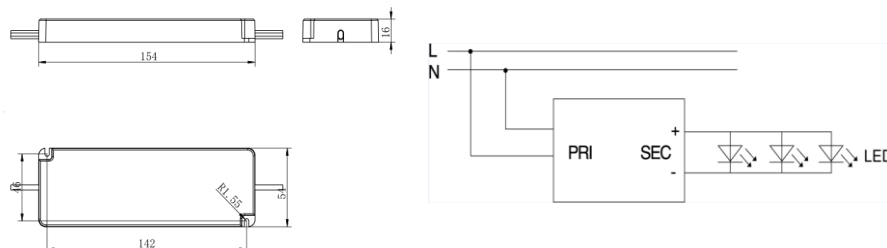
### Compliances and approvals

Safety	EN 61347-2-13
RFI	EN 55015
Harmonics	EN 61000-3-2 Class C
Immunity	EN 61547

### Note

1. All parameters NOT specially mentioned are measured at 240VAC input, rated load and 25 of ambient temperature.
2. Ripple & noise are measured at 20MHz of bandwidth by using a 12" twisted pair-wire terminated with a 0.1uF & 47uF parallel capacitor
3. Expected Life:tc=80°C,0.2%/1000h failure rate

### Physical Parameter



Dimensions(LxWxH):154x54x16mm  
 Housing Material:Plastic  
 Input Wire:L150, VDE H03VVH2-F, 2x0.75mm<sup>2</sup>  
 Output Wire:L150, VDE H03VVH2-F, 2x0.75mm<sup>2</sup>