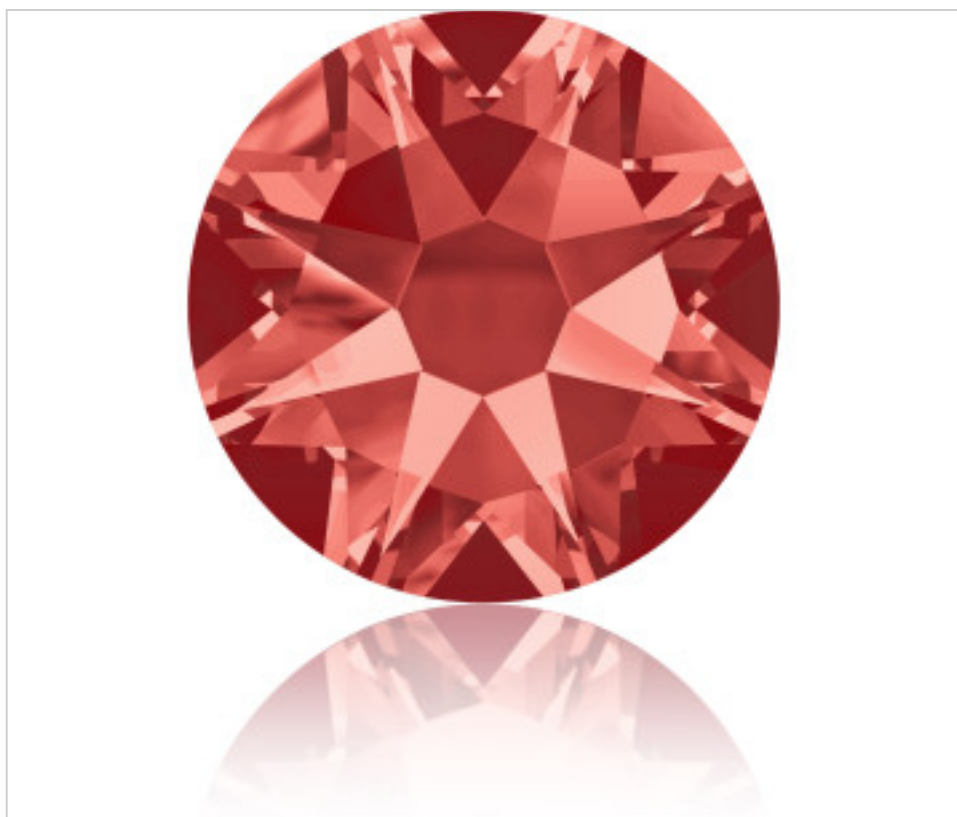


SWAROVSKI CRYSTAL > SWAROVSKI ELEMENTS DE MODE > Flat Backs Hot Fix
2088 Flat Back

PN2088.S34.542 - 5090891

2088 SS34 Padparadsha F(542)

21 nov. 2024



PRIX

| | Lot | Prix sans TVA |
|---------------|-----|---------------|
| Pedido mínimo | 144 | 0,2204€ |



Suite à la page suivante >>

SWAROVSKI CRYSTAL > SWAROVSKI ELEMENTS DE MODE > Flat Backs Hot Fix
2088 Flat Back

PN2088.S34.542 - 5090891

2088 SS34 Padparadsha F(542)

AUTRES CARACTÉRISTIQUES

Taille: SS34 (7.00-7.27 mm)

Couleur: Padparadsha

Foiled: Platinum Pro Foiling (F)

DOCUMENTS

 [Application thermocollage](#)

 [2088 SS34 Padparadsha F\(542\)](#)

 [2088 SS34 Padparadsha F\(542\)](#)