

### Features



- Super compact design for built-in use
- Analogue flicker-free
- Primary and secondary sides come with leads
- Protections: opencircuit, shortcircuit, overload
- Seal with glue, the operating temperature up to 60°C
- DC input compatible (176-280Vdc)
- SELV equivalent
- Suitable for class I&II luminaires



### Selection Guide

Model No.	Nominal Voltage (V)	Nominal Current (A)	Power Factor (A)	THD Full load (%)	Max. Output (W)	Output Current (mA)	Output Voltage (V)	No Load Voltage (V)	Efficiency Full Load (%)
MINI-15-350	220-240	0.10	0.90C	50	15	350	14-42	60	83

### Input Parameters

Parameter	Condition	Min.	Typ.	Max.
Input Voltage Range	AC Input	198VAC	--	264VAC
	DC Input	176VDC	--	280VDC
Rated Input Frequency	AC Input	--	50/60Hz	--
No-load Power Consumption		--	--	0.5W
Inrush Current	Cold Start@230V	15A/100us		

Max.units Per Circuit Breaker

Circuit Breaker	Circuit Breaker Current			
	Typ.	10A	13A	16A
B	46	60	74	93
C	71	92	114	142

### Output Parameters

Parameter	Condition	Min.	Typ.	Max.
Output Accuracy	Full Load@230V	--	±5%	--
Ripple & Noise	Low Frequency < 120Hz, Full Load@230VAC	--	--	100%
Pst LM		--	--	1
SVM		--	--	0.4
Galvanic Isolation	SELV			
Short-Circuit Protection (SCP)	Auto-Recovery If Fault Is Removed			
Over-Voltage Protection (OVP)	Auto-Recovery If Fault Is Removed			
Over-Current Protection (OCP)	Auto-Recovery If Fault Is Removed			

### General Parameters

Parameter	Condition	Value
Ambient Temperature Range $t_a$		-20...+60°C
Maximum Case Temperature $t_c$	Measured on $t_c$ point indicated of the product label	90°C
Max. Case Temp. In Fault Condition		110°C
Storage Temperature Range		-20...+70°C
Relative Humidity	Non Condensing	5...85%
Withstand Voltage	I/P-O/P	3.75kVAC, I leakage < 5mA, 60s
Surge Transient Protection	L-N, L/N-PE	1kV, 2kV
Environmental Rating		Indoor
IP Rating		IP20
Mains Switching Cycles		> 100,000
Expected Lifetime	$t_{cmax}=80^\circ\text{C}$ , 0.2%/1000h failure rate	50,000h

### Physical Parameters

Housing Material	PC
Type of connection	Cable
Dimensions (LxWxH)	65x43x24mm
Mounting hole spacing	59mm
Weight	95 ± 5g

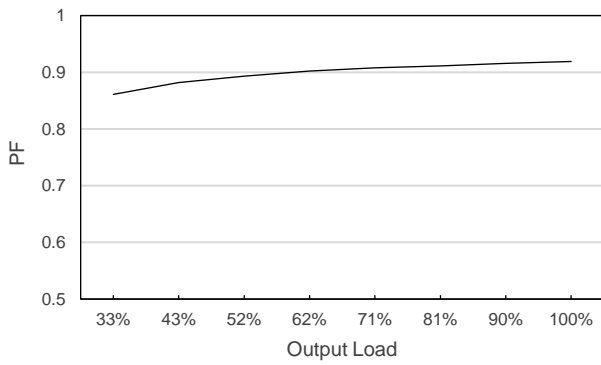
### Standards

Safety Standards	EN 61347-1, EN 61347-2-13
Performance	EN 62384
EMC Standards	EN55015, EN61000-3-2, EN61000-3-3, EN 61547

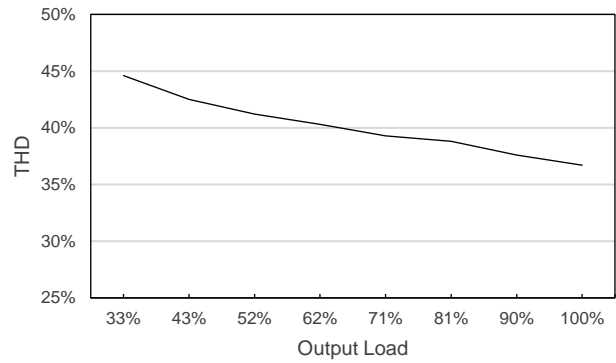
\*ALL parameters NOT specially mentioned are measured at 230VAC input, rated current and 25°C of ambient temperature.

Product Characteristic Curve

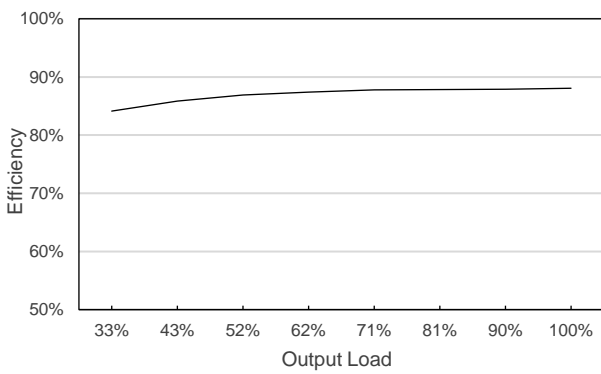
Power Factor vs Load



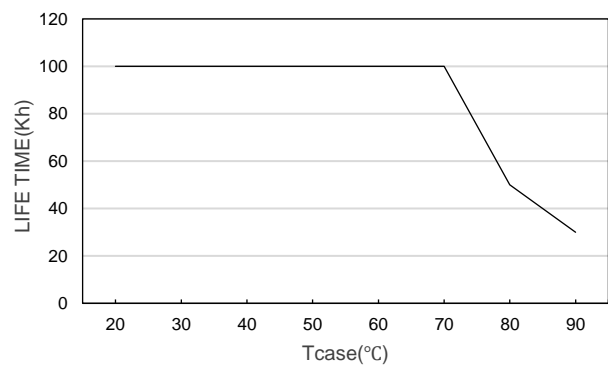
Total Harmonic Distortion vs Load



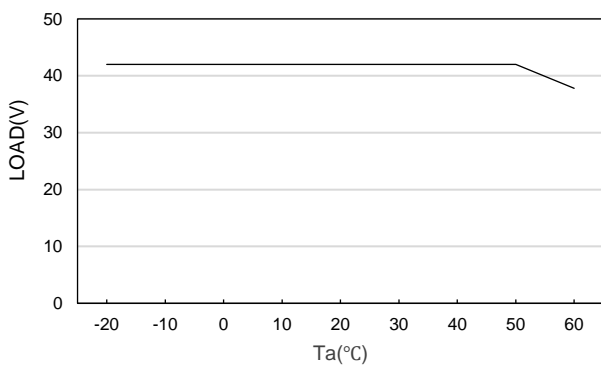
Efficiency vs Load



Life Time vs Case Temperature

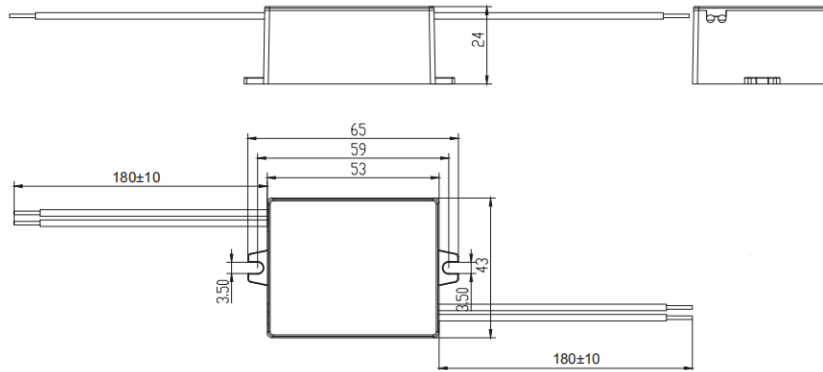


Load vs Ambient temperature

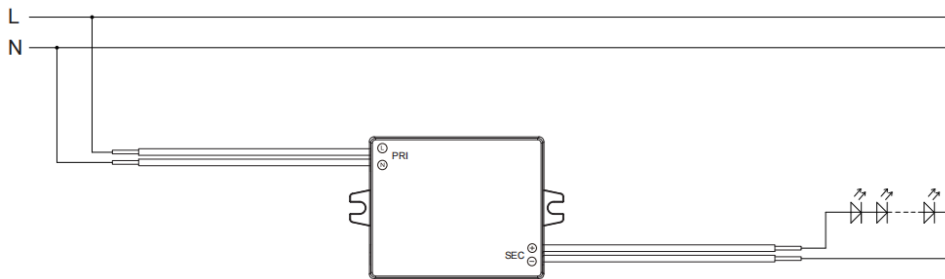


### Appearance of Size

#### Dimension Drawing(mm)



#### Wiring Diagram



**PRI**

Wire: VDE 7702 0.5mm<sup>2</sup>

Length:  $180 \pm 10$ mm

**SEC**

Wire: VDE 7902 0.5mm<sup>2</sup>

Length:  $180 \pm 10$ mm

Hot plug-in or secondary switching of LEDs is not permitted and may cause a very high current to the LEDs.

