

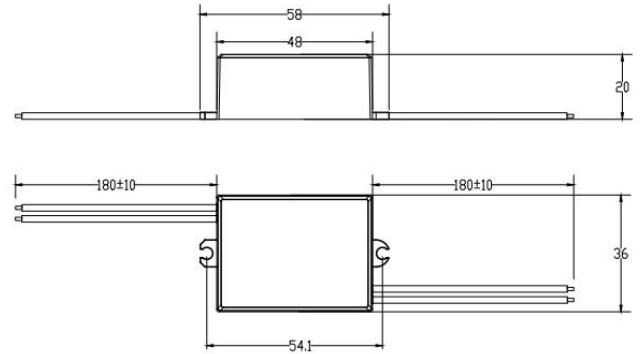


## SWITCH TO BRIGHTER FUTURE

### Product data sheet: MINI-10-xxxT Series

#### Features

- Super compact design for built-in use
- Dimmable constant current driver
- Analogue flicker-free
- Dimming with trailing edge dimmer
- Smooth dimming compatible with most dimmer
- Dimming range 1...100%
- Primary and secondary sides come with leads
- Protections: opencircuit, shortcircuit, overload, overtemperature
- Seal with glue, the operating temperature up to 60°C
- SELV equivalent
- Suitable for class I&II luminaires
- Protection class II



#### Applications

- Office
- Shop
- Hospitality
- Public areas

#### Approbations & Certifications

TUV, CE, CB

#### Housing properties

- Housing material: plastic, white.
- Type of protection IP65.

## Electrical Specifications

Type		Unit	MINI-10-260T	MINI-10-350T	MINI-10-500T	MINI-10-700T
INPUT	Nominal voltage	V	220 – 240			
	Nominal frequency	Hz	50 / 60			
	AC voltage range	V	198 – 264			
	DC voltage range	V	N/A			
	Nominal current	A	0.08			
	THD (Full load)	%	≤25			
	Power factor(Full load)		0.90C			
	Efficiency(Full load)	%	81	79	76	75
	Turn on time	ms	≤500			
	No load	W	N/A			
	Protection class		II			
	Inrush current(Cold start)	A pk	5(th = 100 μs)			
	Max.units per circuit breaker		B10:125 B16:200 C10: 125 C16: 200			
	OUTPUT	Nominal voltage range	V	20 - 39	14 - 29	10 - 20
Maximum voltage(Open Circuit)		Vdc	≤ 48	≤ 35	≤ 28	≤ 23
Nominal current		mA	260	350	500	700
Current accuracy		%	+/- 5			
Current ripple ≤120Hz		%	≤10			
Pst LM			≤ 1			
SVM			≤ 0.4			
Nominal power range		W	5 – 10			
Maximum power		W	10			
Galvanic isolation			SELV			
ENVIRONMENT	Ambient temperature range ta	°C	-20 ...+60			
	Maximum case temperature tc	°C	90			
	Max. Case temp. In fault condition	°C	110			
	Storage temperature range	°C	-20 ...+70			
	Relative humidity	%	5 ... 85(Not condensing)			
	Surge transient protection	kV	0.5   1 (L/N   LN/PE acc to. EN 61547 Clause 5.7)			
	Environmental rating		Indoor/Outdoor			
	IP rating		IP 65			
	Mains switching cycles		> 100,000			
	Expected lifetime	h	50,000 (0.2% / 1'000 h failure rate)			

\*All parameters NOT specially mentioned are measured at 230VAC input ,rated current and 25°C of ambient temperature

### Protections

#### Over temperature

Yes

#### Overload

Yes

#### No load

Yes

#### Short-circuit

Yes

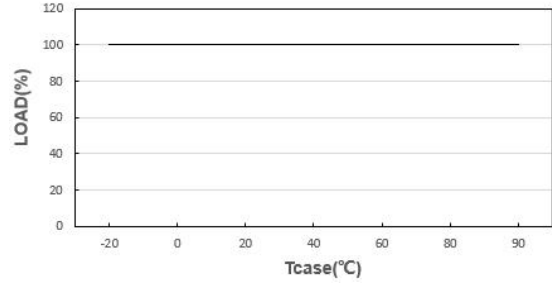
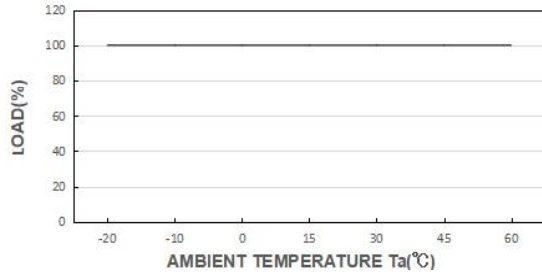
#### Input overvoltage

Maximum allowed input voltage 264VAC

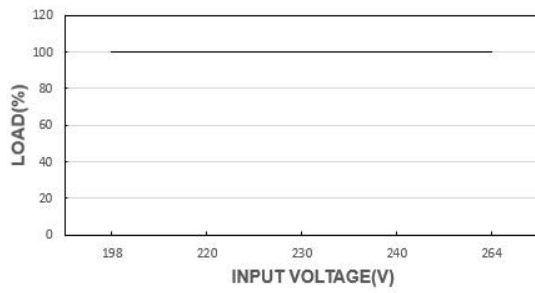
#### Output overvoltage

Yes

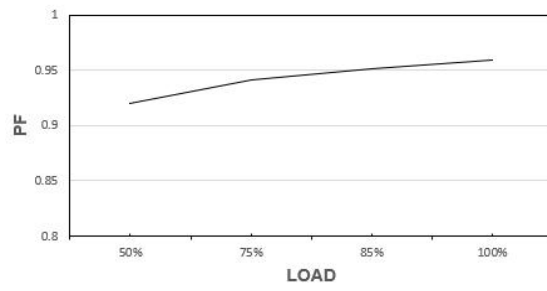
### OUTPUT LOAD vs TEMPERATURE



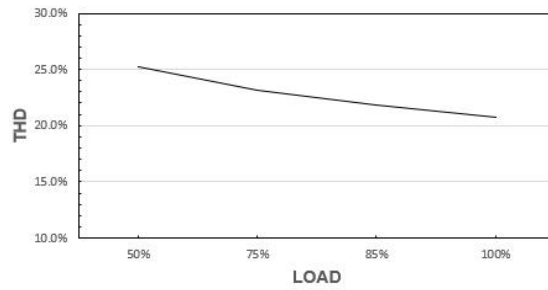
### STATIC CHARACTERISTIC



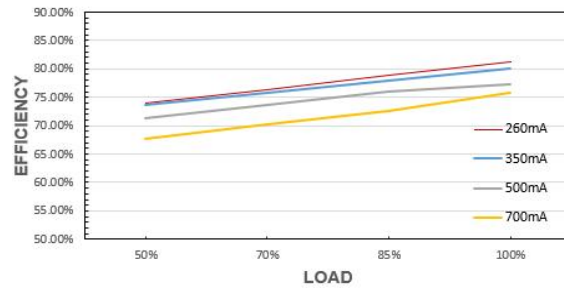
### POWER FACTOR (PF) CHARACTERISTIC



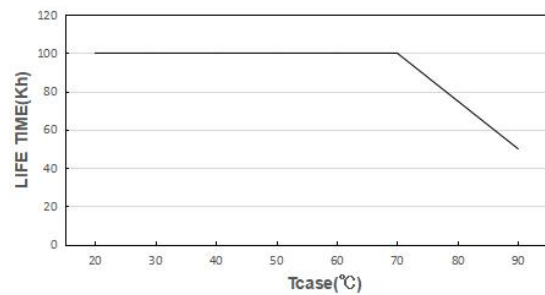
### TOTAL HARMONIC DISTORTION (THD)



### EFFICIENCY vs LOAD



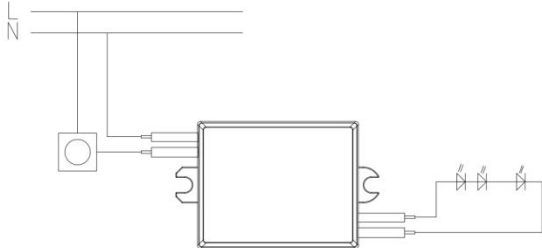
### LIFE TIME



\*The graph is for reference only, and the detailed values refer to the parameter table

## Wiring Diagram

Max. cable length-system:	2m
Dimensions(LxWxH):	58 x 36 x 20 mm
Mounting hole spacing, length	54.1 mm
Wire length	180 mm
Weight:	65 ± 8 g



Input Wire: VDE 7726 0.5mm<sup>2</sup> Output Wire: UL 1015 22AWG

Hot plug-in or secondary switching of LEDs is not permitted and may cause a very high current to the LEDs.

## Remarks

-Touchcurrent: lower than 0.7mA, according to EN60598-1 annex.G and EN61347-1 annexA

## Standards

EN 61347-1  
EN 61347-2-13  
EN 62384  
EN 55015  
EN 61000-3-2  
EN 61000-3-3  
EN 61547  
EN 60598-1  
EN 50581  
IEE1789  
(EU) 2019/2020

## Manufacturer's address:

No.4, Tongfu Road, Tong'an Industrial Center, Tong'an District, Xiamen, Fujian, China

[www.actec.com](http://www.actec.com)