

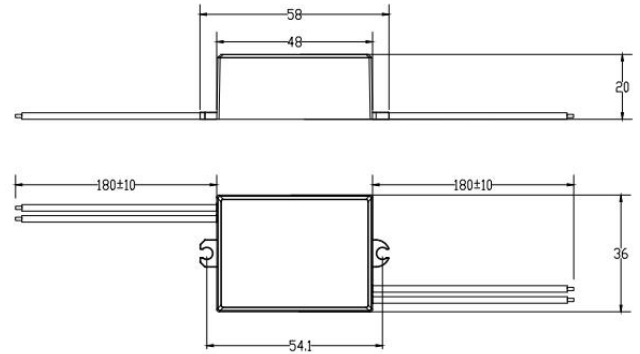


SWITCH TO BRIGHTER FUTURE

Product data sheet: MINI-10-xxxT Series

Features

- Super compact design for built-in use
- Dimmable constant current driver
- Analogue flicker-free
- Dimming with trailing edge dimmer
- Smooth dimming compatible with most dimmer
- Dimming range 1...100%
- Primary and secondary sides come with leads
- Protections: opencircuit, shortcircuit, overload, over temper.
- SELV equivalent
- Suitable for class I&II luminaires
- Protection class II



Applications

- Office
- Shop
- Hospitality
- Public areas

Approbations & Certifications

ENEC, CE, CB, Nemko, RCM

Housing properties

- Housing material: plastic, white.
- Type of protection IP65.

Electrical Specifications

Type		Unit	MINI-10-260T	MINI-10-350T	MINI-10-500T	MINI-10-700T
INPUT	Nominal voltage	V	220 – 240			
	Nominal frequency	Hz	50 / 60			
	AC voltage range	V	198 – 264			
	DC voltage range	V	N/A			
	Nominal current	A	0.08			
	THD (Full load)	%	≤25			
	Power factor(Full load)		0.90C			
	Efficiency(Full load)	%	81	79	76	75
	Turn on time	ms	≤500			
	No load	W	N/A			
	Protection class		II			
	Inrush current(Cold start)	A pk	5(th = 100 μs)			
	Max.units per circuit breaker		B10:125 B16:200 C10: 125 C16: 200			
	OUTPUT	Nominal voltage range	V	20 - 39	14 - 29	10 - 20
Maximum voltage(Open Circuit)		Vdc	≤ 48	≤ 35	≤ 28	≤ 23
Nominal current		mA	260	350	500	700
Current accuracy		%	+/- 5			
Current ripple ≤120Hz		%	≤10			
Pst LM			≤ 1			
SVM			≤ 0.4			
Nominal power range		W	5 – 10			
Maximum power		W	10			
Galvanic isolation			SELV			
ENVIRONMENT	Ambient temperature range ta	°C	-20 ...+60			
	Maximum case temperature tc	°C	90			
	Max. Case temp. In fault condition	°C	110			
	Storage temperature range	°C	-20 ...+70			
	Relative humidity	%	5 ... 85(Not condensing)			
	Surge transient protection	kV	0.5 1 (L/N LN/PE acc to. EN 61547 Clause 5.7)			
	Environmental rating		Indoor/Outdoor			
	IP rating		IP 65			
	Mains switching cycles		> 100,000			
	Expected lifetime	h	50,000 (0.2% / 1'000 h failure rate)			

*All parameters NOT specially mentioned are measured at 230VAC input ,rated current and 25°C of ambient temperature

Protections

Over temperature

Yes

Overload

Yes

No load

Yes

Short-circuit

Yes

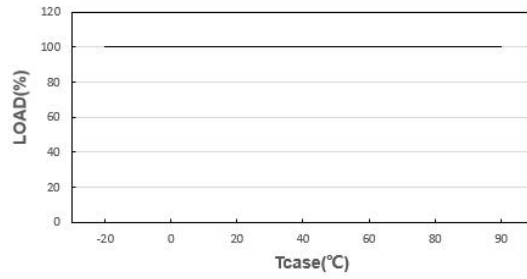
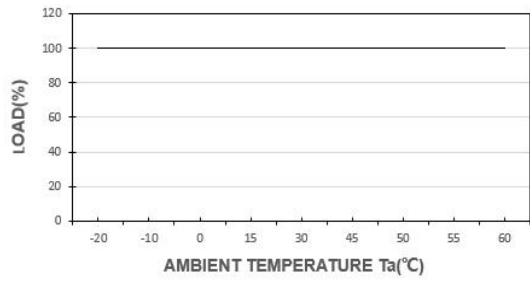
Input overvoltage

Maximum allowed input voltage 264VAC

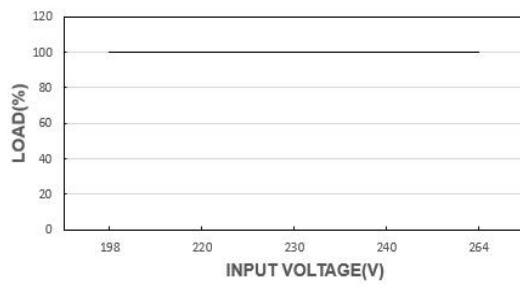
Output overvoltage

Yes

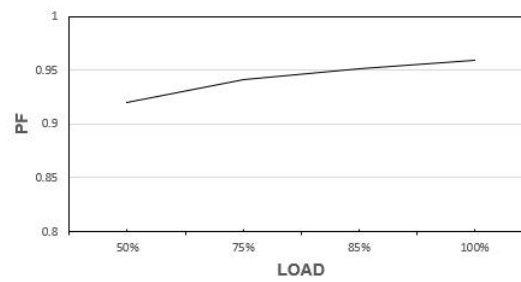
OUTPUT LOAD vs TEMPERATURE



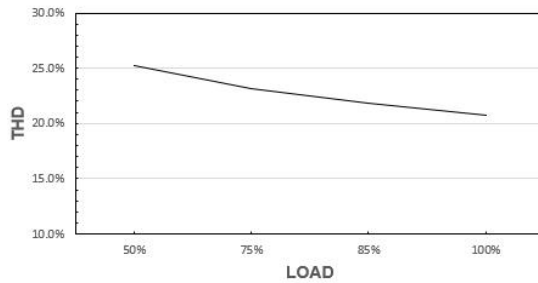
STATIC CHARACTERISTIC



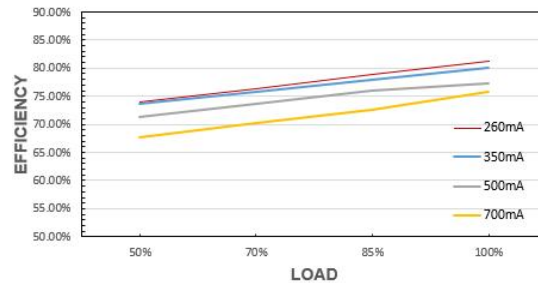
POWER FACTOR (PF) CHARACTERISTIC



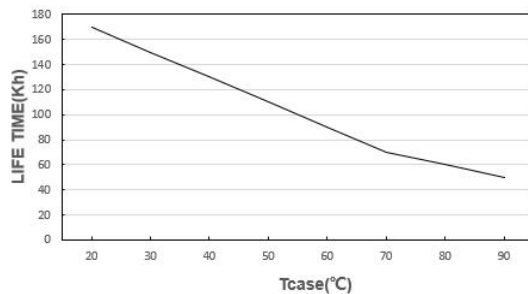
TOTAL HARMONIC DISTORTION (THD)



EFFICIENCY vs LOAD



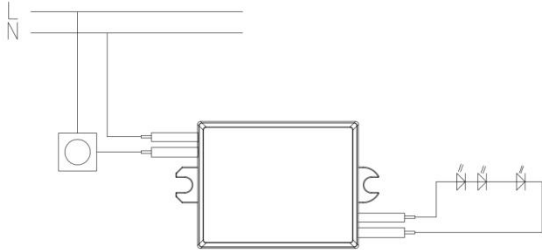
LIFE TIME



*The graph is for reference only, and the detailed values refer to the parameter table

Wiring Diagram

Max. cable length-system:	2m
Dimensions(LxWxH):	58x36x20mm
Mounting hole spacing, length	54.1 mm
Wire length	180 mm
Weight:	65±8 g



Input Wire: VDE 7726 0.5mm² Output Wire: UL 1015 22AWG

Hot plug-in or secondary switching of LEDs is not permitted and may cause a very high current to the LEDs.

Remarks

-**Touchcurrent:** lower than 0.7mA, according to EN60598-1 annex.G and EN61347-1 annexA

Standards

EN 61347-1
EN 61347-2-13
EN 62384
EN 55015
EN 61000-3-2
EN 61000-3-3
EN 61547
EN 60598-1
EN 50581
IEE1789
(EU) 2019/2020

Manufacturer's address:

No.4, Tongfu Road, Tong'an Industrial Center, Tong'an District, Xiamen, Fujian, China

www.actec.com