

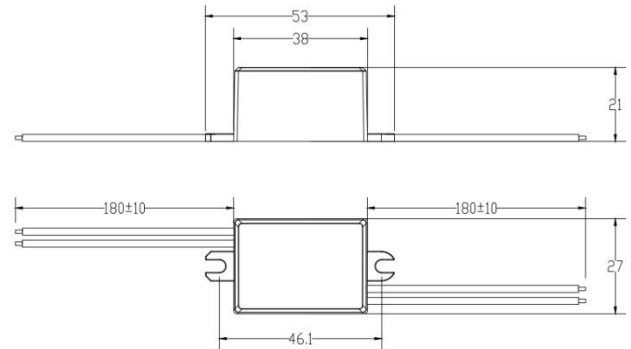


## SWITCH TO BRIGHTER FUTURE

### Product data sheet: MINI-4-XXX Series

#### Features

- Super compact design for built-in use
- Analogue flicker-free
- Primary and secondary sides come with leads
- Protections: opencircuit, shortcircuit, overload, overtemperature
- Seal with glue, the operating temperature up to 60°C
- DC input compatible (176-250V DC)
- SELV equivalent
- Suitable for protection class I and II luminaires
- Protection class II



#### Applications

- Office
- Shop
- Hospitality
- Public areas

#### Approbations & Certifications

TUV, CE, CB

#### Housing properties

- Housing material: plastic, white
- Type of protection IP65

## Electrical Specifications

Type		Unit	MINI-4-200	MINI-4-300	MINI-4-350	MINI-4-500	MINI-4-600	MINI-4-700
<b>INPUT</b>	Nominal voltage	V	220 – 240					
	Nominal frequency	Hz	50 / 60					
	AC voltage range	V	198 – 264					
	DC voltage range	V	176 - 250					
	Nominal current	A	0.05					
	THD (Full load)	%	≤110					
	Power factor(Full load)		0.60C					
	Efficiency(Full load)	%	78	78	77	75	75	74
	Turn on time	ms	≤500					
	No load	W	≤ 0.5					
	Protection class		II					
	Inrush current(Cold start)	A pk	10(th = 100 μs)					
	Max.units per circuit breaker		B10:70 B16:112 C10: 140 C16: 224					
	<b>OUTPUT</b>	Nominal voltage range	V	10-20	7-14	6-12	4-8	3-7
Maximum voltage(Open Circuit)		Vdc	≤28	≤22	≤20	≤16	≤15	≤14
Nominal current		mA	200	300	350	500	600	700
Current accuracy		%	±10					
Ripple & Noise		mA	≤70					
Pst LM			≤ 1					
SVM			≤ 0.4					
Nominal power range		W	2-4					
Maximum power		W	4					
Galvanic isolation			SELV					
<b>ENVIRONMENT</b>	Ambient temperature range ta	°C	-20 ...+60					
	Maximum case temperature tc	°C	85					
	Max. Case temp. In fault condition	°C	110					
	Storage temperature range	°C	-20 ...+70					
	Relative humidity	%	5 ... 85(Not condensing)					
	Surge transient protection	kV	0.5   1 (L/N   LN/PE acc to. EN 61547 Clause 5.7)					
	Environmental rating		Indoor/Outdoor					
	IP rating		IP 65					
	Mains switching cycles		> 100,000					
	Expected lifetime	h	50,000 (0.2% / 1'000 h failure rate )					

\*All parameters NOT specially mentioned are measured at 230VAC input ,rated current and 25°C of ambient temperature

### Protections

**Overtemperature**

Yes

**Overload**

Yes

**No load**

Yes

**Short-circuit**

Yes

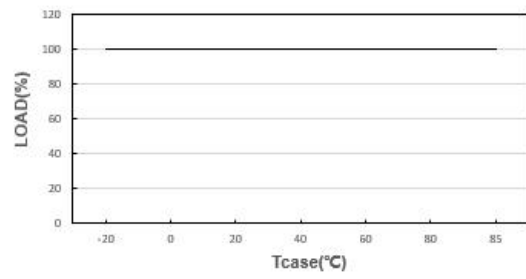
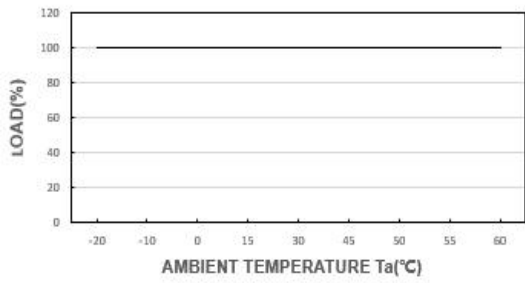
**Input overvoltage**

Maximum allowed input voltage 264VAC

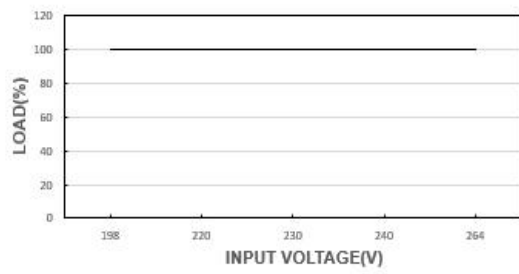
**Output overvoltage**

Yes

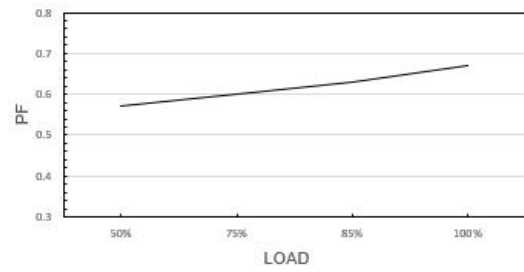
### OUTPUT LOAD vs TEMPERATURE



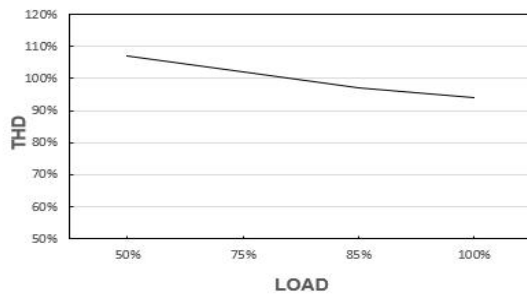
### STATIC CHARACTERISTIC



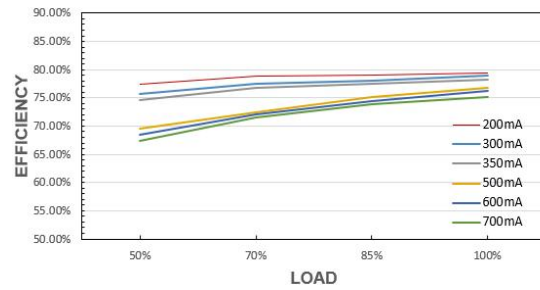
### POWER FACTOR (PF) CHARACTERISTIC



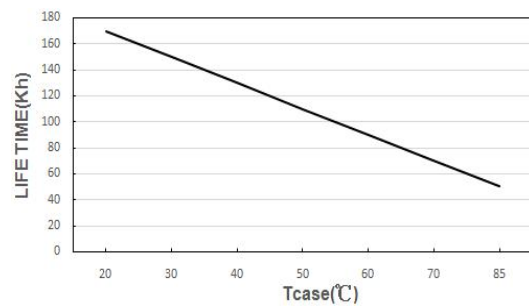
### TOTAL HARMONIC DISTORTION (THD)



### EFFICIENCY vs LOAD



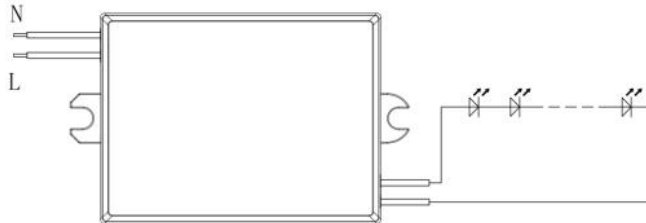
### LIFE TIME



\*The graph is for reference only, and the detailed values refer to the parameter table

## Wiring Diagram

Max. cable length - system:	2 m
Dimensions(LxWxH):	53 x 27 x 21 mm
Mounting hole spacing, length	46.1 mm
Wire length	180 mm
Weight:	45±8 g



Input wire: VDE 7726 0.5mm<sup>2</sup>; Output wire: UL101522AWG;

Hot plug-in or secondary switching of LEDs is not permitted and may cause a very high current to the LEDs.

## Remarks

-**Touchcurrent:** lower than 0.7mA, according to EN60598-1 annex.G and EN61347-1 annexA

## Standards

EN 61347-1  
EN 61347-2-13  
EN 62384  
EN 55015  
EN 61000-3-2  
EN 61000-3-3  
EN 61547  
EN 60598-1  
EN 50581  
IEE1789  
(EU) 2019/2020

## Manufacturer's address:

No.4, Tongfu Road, Tong'an Industrial Center, Tong'an District, Xiamen, Fujian, China

[www.actec.com](http://www.actec.com)