

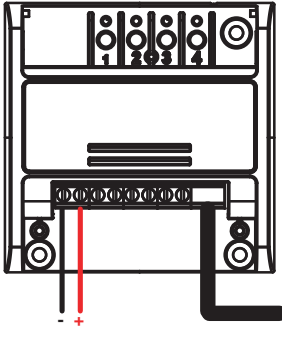
# PLANO-MASTER



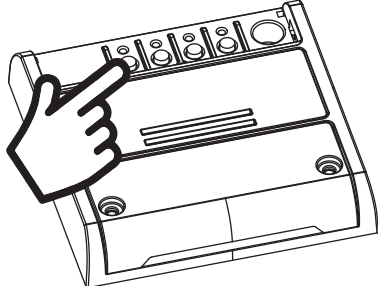
## Commissioning guide

### 1 CONNECTIONS AND LED TYPE SETTING

**STEP 1**  
Connect the lights following the diagrams



**STEP 2**  
Select the type of light:  
Single-color  
Led, cct, rgb or rgbw

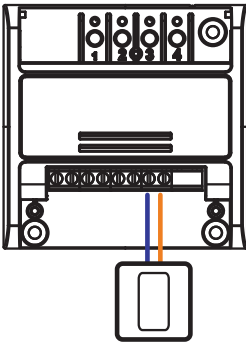


**PAGE 4**

**PAGE 8**

### 2 USE VIA WIRE

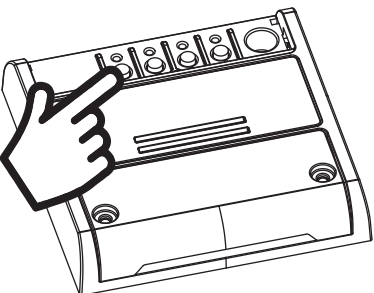
**STEP 1**  
Once the push button is connected, this button is already working.  
The function of the button depends on the type of light connected




**STEP 2**  
The functions are:  
SHORT PRESSURE:  
On/Off  
LONG PRESSURE (light on): Dim Up/Down  
LONG PRESSURE (light off):  
Single-color light: DIM UP  
CCT light: Temperature change  
RGB/W light: Color Change

### 3 USE VIA RADIO - ASSOCIATION RECEIVER-TRANSMITTER

**STEP 1**  
Press the button 1



**STEP 2 2**  
Sending a signal with the radiotransmitter.  
Functions change according to the used radiotransmitter



**PAGE 12**

## GENERAL INFORMATION FOR APP ONE SMART AND VOICE COMMAND

The control by App and Google or Alexa voice control systems require the creation of accounts that guarantee the security of the system and allow the management of the system.

Accounts are composed of:

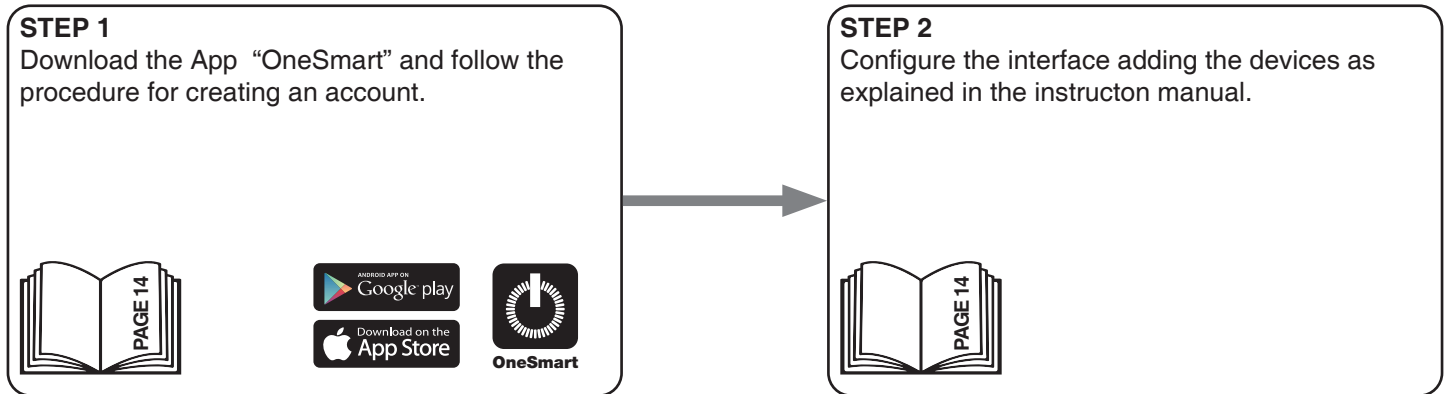
- a valid e-mail address. We'll send email to this address
- a security password

Are required: one account for OneSmart application, one for Google home and one for Alexa.

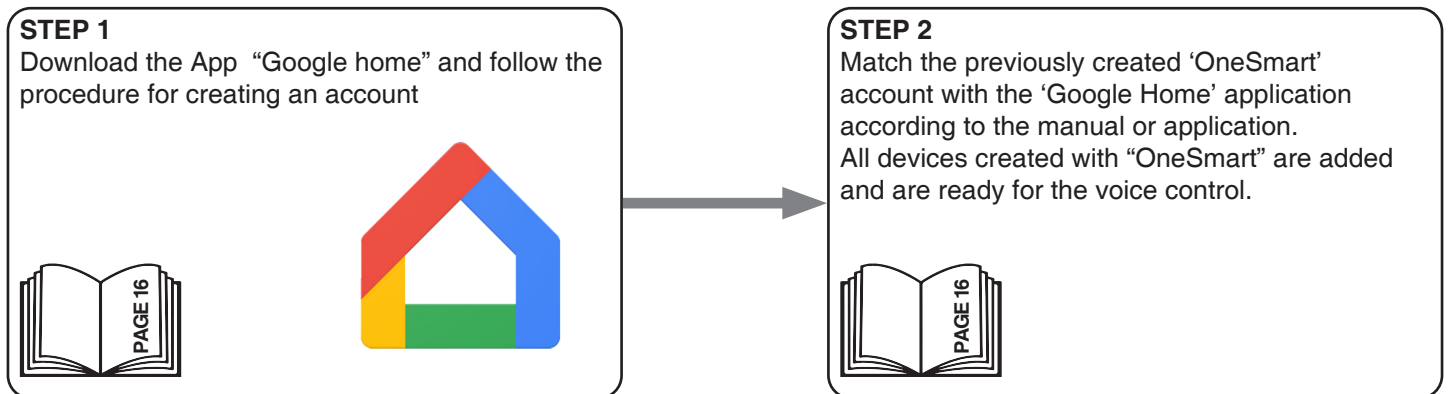
The emails and passwords for these accounts can be the same.

Once the system is configured, device information and commands are stored in a cloud. This allows to manage the system by distance from wherever in the world.

## 4 CONFIGURATION AND USE OF ONE SMART APP



## 5 CONFIGURATION AND USE WITH GOOGLE HOME



## 6 CONFIGURATION AND USE WITH AMAZON ALEXA

