

Product Features:

- Rotary dimmer with on/off push
- No separate switch required -built in switch
- No neutral required, soft start
- Overheating protection
- Over current protection
- Mechanically set max or min dimming level
- Compatible with clipsal style wall plates

Technical Data:

Dimming method	Trailing Edge
Rated supply voltage	220V~240VAC 50/60Hz
Maximum rated load	350W
Minimum rated load	2W
Dimming range	1%~100%
Ta	0~40°C
IP rating	IP20
Dimensions (LxWxH)	23x23x53.3mm

Compatible loads:

	Dimmable LED lamps
	240V incandescent/halogen
	Electronic Transformers
	Dimmable CFLs

Push button operation:

1. Dimmer Turn on/off

If the light is OFF, short press the button, the light is ON at the brightness as the rotary set.

If the light is ON, short press the button to switch off.

2. Set the Key function valid

Short press 5x quickly to set the key function enable push on/off.(Default)

Short press 7x quickly to set the key function disable push on/off, and then dimmer will not turn off.

3. Set the LED indicator valid

Short press 4x quickly to set the LED indicator on.(Default)

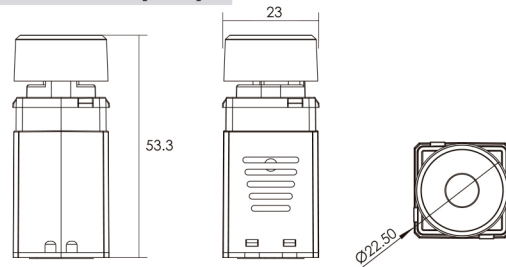
Short press 6x quickly to set the LED indicator off.

4. Set the minimum dimming level

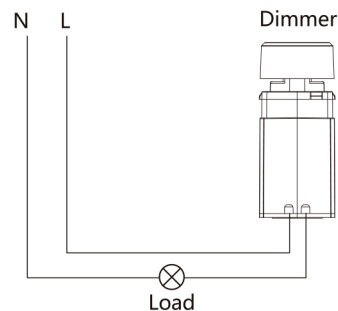
Short press 8x quickly to set default dimming. Uses alternate software that may improve compatibility. Minimum dimming level is 10%.

Short press 9x quickly to set compatibility option.Uses optimised software for minimum dimming level of 2%.

Dimensions(mm):



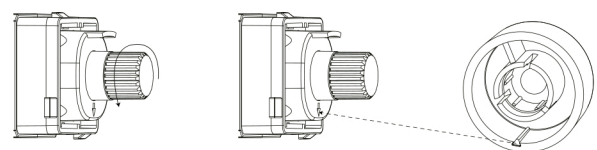
Wiring:



Mechanically set max or min dimming level

The dimmer include a feature which allows the max or min dimming level to be set, install the dimmer and connect the required lighting loads, then follow the steps to reset the minimum and maximum dimming level.

- Step 1.Remove the dimming knob from the dimmer shaft;
- Step 2.Turn the dimmer shaft anti-clockwise until the required minimum brightness level is reached;
- Step 3.Align the arrow marker on the front face of the dimmer of the triangular marker on the inside of the dimmer knob;



- Step 4.Push the dimmer knob back onto the shaft.

The dimming level is now reset.

If you want to set the new minimum brightness, adjust the required brightness, remove the dimming knob and then follow the step 3 and step 4 to set the new minimum brightness.

If you want to set the new maximum brightness, adjust the required brightness, follow the below operation and then push the dimmer knob back onto the shaft to complete.

